

Clara Maass installs cancer fighting computer

— see page 6

Di Ruggiero speaks out on Belleville's merits

— see Citizens Forum, page 5

Lady Buc spikers extend win streak to 5 in a row

— see Sports, page 17

# Belleville Times

77 Year No. 44  
An Orecchio Publication

Serving Belleville Since 1909

Thursday, October 9, 1986

35¢

## Planning board hearing on new police station is forum for debate

By Christopher Bifani

It went exactly the way Planning Board Chairman Joe Doyle wanted it—smooth, informative, and most of all, calm.

On October 2, the Belleville Planning Board took the reins on the Board of Commissioners' controversial \$5 million police station project and hosted a public hearing at the high school.

Doyle had previously told the Times that he was seeking to learn more about both sides of the controversy, but that he wanted the sides to present themselves in an orderly fashion.

Due in part to the respect he received from both sides, and also from the small size of the crowd, there was a high school football game going on next door to the hearing came off without incident.

The state was arranged so that Doyle, his fellow board members, consulting consultant Grace Harris and Attorney Tom DiBiasi were at the table to the left.

In the right was a table which served the planning board's invited panel.

Public Safety Commissioner Ralph DiRuggiero, Police Chief George Lester, Consulting Engineer Neil Siciliano, Municipal At-

torney Frank Cozzarelli, and police station planning consultant flown in from Chicago—Michael Gondale, of Phillip Swager Associates—filled the seats.

Also at the panel's table was architect Frank Richlan of Manhattan-based Beckard Richlyn Associates, the project's architect.

Richlan made a presentation at center stage, on between the two tables where he had set up two easels showing the early phases of the public safety building's plans.

Plans to be changed at request of police

Near the end of his presentation, Richlan commented lightly on the changes sought by Chief Lester, saying that revisions requested by the police department would be designed to meet.

Specifically, the two most important flaws in the design, according to Lester, are the lack of a door leading directly to the police parking lot, and the location of the courtroom in between police of face areas, a user up which would lead to transporting prisoners through non-secure areas.

Eight and four sides to every story

A good deal of debate centered around the cost of the building, now estimated at \$3.7 million for hard construction and \$700,000 more for legal fees, architects, engineering, and other costs.

The Concerned Citizens of Belleville, represented by Vincent Frantantonio, president, Gabriel Nazzola, vice president, Cornelius Vander Zwan, secretary, and several rank and file members made their feelings known from the public podium at the floor.

One of the CCB's main contentions is that a public safety building would cost less if it was designed as a four-sided building rather than the eight-sided building the architect's picture reveals.

The eight sides effect is achieved by recessing the central portion of the building to create an aesthetically pleasing gracious entrance, according to Richlan with the end result being a building that is shaped like a U.

When the CCB addressed the planning board with their contention that a four sided building would cost less than an eight sided one, Chairman Doyle referred the question directly to Richlan.

The architect, however, was not specific in his reply.

The gracious entrance makes the building visually interesting. But you can't say it would cost less to build a four-sided building. Were we to design a four sided building we would be forced to seek other ways to make it visually interesting, and these would add to the cost.

Richlan said it was impossible to simplify the argument with cost estimates, and was strong in rejecting—flatly ridiculing—the activist group's contention that a simpler building would cost less.

However, as Doyle had told the Times prior to the hearing, the emphasis was not so much on how much or little the building will cost, but whether it's a good value as the plans stand now.

This determination will be made sometime next month, after the planning board and planning consultant Grace Harris review the events of the hearing, as well as



Superintendent of Schools Michael Nardiello: "I've never seen an irresolvable issue." (Photo by Christopher Bifani)

Mediation renews October 28

## Administration mute pending new talks

As the 57 member Belleville Custodians and Maintenance Workers' Association works through its fourth month without a contract, their collective frustration at what union leaders claim is substandard pay has taken them to the streets—with angry, but peaceful, picketing demonstrations at public schools throughout town.

Two protests were held at Schools 5 and 3 Monday, October 6, union sources said, following an initial picket of the Board of Education's monthly location meeting at School 10, September 29.

While demonstrating workers called for a speedy, mutually acceptable conclusion to the labor dispute, workers president Morris Renna went public with the details of the group's grievances.

Renna told the Times last week that the board is offering the Custodians and Maintenance Workers Association a 3 percent annual increase while administrators he contends, received raises of 8 percent and more. Further, Renna claims that the discrepancy is greater in the wallet than on paper because the custodians, maintenance workers, and bus drivers he represents make far less to begin with.

School officials kept it confidential

Although Board of Education President Phil Linfante and

Superintendent of Schools Michael Nardiello expressed hope that a strike will be averted and a contract agreed upon, both chose not to reveal their side of the negotiations pending a second round of state mediation October 28.

"On our end we're hopeful," Linfante said. "The mediator is willing to work through the night (October 28) to bring this thing to closure."

Nardiello said that while it was the union's "right" to go public with their demands, "our group is abiding by the confidentiality of negotiations." The superintendent feels it is improper to define the administration's position in between rounds of mediation.

"We're remaining mute," Nardiello said. Regarding the events leading up to the current labor dispute, both board president and school superintendent contend that the situation is "not unique or unusual" to the school system, and that in the past negotiations between administration and labor unions have sometimes lasted even longer.

Negotiations began months ago

The administrators said the current labor dispute began weeks before the June 30 contract expiration, but that not enough "movement" occurred between

(continued on page 3)

## Asbestos levels at School 7 are within acceptable range

By Christopher Bifani

The P.M. Keegan Engineering and testing firm of Hulsple has reported to Belleville Schools Superintendent Michael Nardiello that air samples obtained from Belleville School 7 were all below the threshold limit during tests conducted on September 19 and 22.

According to the firm's report, air samples were collected in a "normally accepted" method from four different locations in the school, from the start to the end of the school day.

Two hallways, the boiler room, and the boys bathroom were the

four test sites, with the hallways receiving a good rating and the boys room receiving a fair rating. Only the boiler room received a rating of poor.

Asbestos particles are measured in terms of fibers per cubic centimeter, with any amount over 10 fibers per cubic centimeter being above the threshold.

Both hallways measured 1 fiber per cubic centimeter, while the boys room measured at 2 fibers. The boiler room, which is not frequented by students, tested at 1 fiber per cubic centimeter for a poor rating, but still 7 parts below the threshold.

James Ferris, Chief Engineer for the Keegan testing firm, said that doors to classrooms and at the end of halls were kept open to facilitate air flow and to obtain a more representative sample of the area.

Superintendent Nardiello told the Times he felt assured by the results of the reports.

These results indicate that airborne asbestos hazard does not exist in School 7, Ferris reported to Nardiello.

Earlier in the month parents of School 7 children had expressed concern at a Board of Commissioners meeting that the school might be unsafe.

## 'Isabella' and 'Ferdinand' return to honor Columbus in big parade

By Karl J. Laczynski

Queen Isabella and King Ferdinand will return from the afterlife to honor the man who discovered America for their throne, Christopher Columbus, during the fourth annual Belleville-Nutley Columbus Day Parade scheduled for Sunday at 1 p.m.

The queen and king are actually volunteers who will ride in a car sponsored by the Gondola restaurant of Nutley, one of 40 groups set to march in the procession.

The parade will start at Belleville High School stadium and proceed up Division Street to Passaic Avenue. The march will then turn up for a demonstration to Franklin Avenue on its way to Nutley. It will pass reviewing stands at Nutley Savings and Loan, 371 Franklin Ave. from which commissioners from the two towns and other dignitaries will view the parade. The procession will wind up on High Street.

Jodi Nosti of Nutley and Christina Albanese of Belleville are this year's Bella Signorinas. Nutley attorney James Piro will lead the procession as grand marshal.

The Columbus Day festivities actually began this past Friday with a the third annual Columbus Day Ball, held at the Chandelier Restaurant in Bel-

leville. More than 200 people enjoyed a five-course meal and dancing (see photos of the event on page 13).

According to parade general chairwoman Joan Charletta, 13 bands and 27 marching units will be included in the procession. Among the special features will be a float in the shape of a cake to honor the 100th anniversary of Nutley Savings & Loan, an anti-fire engine carrying

members of Essex County American Legion Post 105, and nine motorcycles from the Long Riders Motorcycle Club of Nutley. The last vehicle, a flat bed truck, will carry the rock group Gabe, Nazz and the Charges, fronted by Gabriel Nazzola Jr. of Belleville, son of the former member of the Belleville Board of Education.

The Columbus Day Parade will be held rain or shine.



At the Ball—Public Works Commissioners Joe Grande of Belleville and Peter Scarpelli of Nutley take center stage at the annual Columbus Day Ball. (Photo by Christopher Bifani)



Board of Education President Phil Linfante: "On our end we're hopeful. The mediator is willing to work through the night to bring this thing to closure." (Photo by Christopher Bifani)

## Contents...

Belleville Briefly	2
Editorial	4
Crime breaker	8
Social News	10-11
Sports	13-14
Religious Viewpoint	11
Events in the area	12
Social News	13
Sports	15-17
Belleville pix	18-19
Columbus Day Sales	21-23
Classified	24-27

(continued on page 3)

## BELLEVILLE briefly...

### Township Democrats plan pre-election breakfast

Chester Prosperi, Belleville Democratic Committee Chairman, has announced that Al Vecchione will chair the committee's 22nd annual breakfast Sunday, November 2, 10 a.m. at the Changelier Restaurant on Franklin Avenue.

Peter Shapiro's office has confirmed that the County Executive

will be attending this breakfast.

Lois Servadio will serve as co-chairperson. Master of ceremonies will be Commissioner Ralph Di Ruggiero.

Tickets are available for the breakfast by contacting Betty Barr, ticket chairperson at 759-0868 or Chester Prosperi at 759-2568.

### GOP breakfast rally planned

A pre-election breakfast rally at Quality Inn in downtown Newark for Republicans Nicholas Amato and Earl Harris is being planned for Sunday, Nov. 2, according to an announcement today by Angelo Risioli, Belleville's municipal GOP chairman.

Amato, a former Belleville town attorney who went on to serve 15 years as Essex County Surrogate, is hoping to unseat Peter Shapiro in the November election. Harris, an at-large Newark councilman, is the Republican candidate for surrogate.

Nutley Republican chairman

attorney James Piro, is working

with Al Clark, chief of staff for Harris, in setting up the program and arrangements for the breakfast.

"We're expecting more than 1,000 persons at the breakfast," Piro promised.

The event is set for 9:30 a.m. Sunday, Nov. 2, and is a county wide rally complete with music, balloons and appearance by state Republican leaders.

Tickets have been distributed through municipal Republican chairman and may also be reserved by calling Carl Orechio, general chairman of the breakfast, at 667-4000.



**Lost Pup** — Somewhere in Belleville, someone must be heartbroken because their male Brittany Spaniel has not returned home. He is at the Associated Humane Societies where he is awaiting "A New Leash On Life." For more information, call the Society at 824-7080 and refer to file No. 175025.

The Society has many beautiful mixed breeds and pedigrees available including Chihuahuas, Poodles, Lakeland Terriers, Doberman Pinschers, Beagles, Pointers and Retrievers. The Associated Humane Societies which also has a low cost spay and neuter clinic is located at 124 Evergreen Avenue in Newark, just off Routes 1 and 9 near the Newark International Airport. The society is open seven days a week for your convenience. Stop in and say hello.

## Belleville Knights planning open house

By Peter Mackiewicz

Knights of Columbus Council No. 835 announces that any Catholic gentleman 18 years or over interested in joining the Knights of Columbus or seeking more information on same may join them at their open house on Friday, October 17 from 7:30 p.m. until 10 p.m. Please contact Richard Glogozia, membership director at 759-8626, or Grand Knight James Kiernan, at 759-5196.

The Knights of Columbus, the largest fraternal Catholic organi-

zation (encompassing seven countries as well as the United States) has launched a membership drive for new members. The Belleville Council has instituted "Grow with us," a membership drive for the 1986-87 fraternal year.

The Knights of Columbus is involved in all aspects of recreational and charitable work in our churches and community activities. The Belleville Knights are especially dedicated to helping special children, veterans in V.A. hospital and adults of our community, through fund raising activities and charity drives.

## Middle School opens doors for parents to reminisce

The administration and staff of Belleville Middle School cordially invite the parents of Belleville Middle School students to attend an "Open House" scheduled for Wednesday, October 15 from 7 to 9:30 p.m.

Besides reminiscing their own school days, at open house parents follow a mini-version of their child's daily schedule. They meet with individual subject matter

teachers where introductions to courses are given. They see the various texts that are utilized and become aware of specific goals and course requirements. Guidance counselors are also available to discuss any problems.

A big turnout for this special evening is anticipated with the aim of strengthening parental involvement and fostering good teacher/parent interaction.

## 1+2=3 new math teachers

The Belleville Schools Mathematics Department is pleased to announce the addition of three new mathematics teachers. Maria Narciso is the newest addition to Belleville Middle School. She teaches the general, academic and enriched courses in grade eight. Narciso received a Bachelor of Science Degree in Mathematics from the University of Rhode Island, and is presently working toward a master degree in computer science at St. Peter's College.

Lori Blum and Janice Lefebvre are the newest additions to Belleville High School. Blum teaches basic math in grade ten and Lefebvre teaches Mathematics I General, Geometry Academic and Algebra I Academic. Both Blum and Lefebvre received Bachelor of Science degrees in Mathematics from Montclair State College.

## Jean Libby made director of Friendly Visitor Program

William Wood, President of the Community Mental Health Services for Belleville, Bloomfield and

Nutley announced the recent selection last month of the new Director of the Friendly Visitor

Program, Jean Libby.

Libby brings to this position experience with older persons having served with the Retired Senior Volunteer Program and the Foster Grandparent Program in Iowa prior to her move to New Jersey. She is a board member of the Senior Care Activities Center, Montclair and has been a volunteer with two senior citizens in Bixomfield. She played in the orchestra of the Montclair Operetta Club's spring presentation, "My Fair Lady." Libby lives with her husband, Scott, in Montclair.

The Friendly Visitor Program reduces isolation of the frail elderly through a network of volunteers who provide regular visitation or telephone contact to the frail elderly. The program also provides information and referral to those 60 years of age and over to other community resources.

For more information about the Friendly Visitor Program, a United Way Agency, or to explore becoming a volunteer, call 450-3435.

### Troise Insurance Agency INSURANCE POOR?

Many Discounts Available  
Truck - Auto - Life - Homeowners  
Tenant Insurance  
Free Computerized Quote  
Personalized Service  
759-4100

Monday thru Friday 9 a.m. - 5:30 p.m.  
Saturdays 9 a.m. to 12 noon  
172 WASHINGTON AV. BELLEVILLE



### Geriatric Dinner Dance

The Family Council Inc. of Essex County Geriatric Center is having their Sixth Annual Dinner Dance at the Branch Brook Manor in Belleville at 7:30 p.m. on Friday, Oct. 24.

There will be music, entertainment and prizes. Tickets are \$30

per person for a full course dinner. All proceeds are used for direct benefit of the 332 residents at the center. For tickets call Erna Mastro 667-4430 or Irma Kurdyla at 751-1270.

### DON'T JUDGE A BOOK BY ITS' COVER ....

Gold- Blue- Red- Purple- Nice Colors. They make nice jackets too. Just drive into any Hamburger Stand and see. But when you need to talk Real Estate, don't look for colors, look for competence.

### REILLY REALTORS

759-1682

Now Interviewing For Career Positions

### COLUMBUS DAY

# Sale

20% off All Merchandise In Stock  
Fri. - Sat. - Mon. October 10th-11th-13th



Plaza Bootery

"Where Fit Is Always Guaranteed"

483 Franklin Ave. • Nutley, N.J. 667-8964  
SHOE REPAIR DONE ON PREMISES

FREE PARKING — MAJOR CREDIT CARDS HONORED

101 Years of Uninterrupted Dividends

# CAR LOANS

## FOR THE BEST RATES PLUS FAST SERVICE

# 9.75% APR...36 mos.

NEW CARS ONLY — LIMITED TIME ONLY!

And you don't need an account with us to qualify.

# FIRST DeWITT SAVINGS

AND LOAN ASSOCIATION

BELLEVILLE • BLOOMFIELD • CEDAR GROVE • HOPATCONG

WEST CALDWELL • BRICKTOWN • PARSIPPANY

TELEPHONE 751-2800 ALL OFFICES



Time 11 AM to 2 PM  
October 11-18-25 and November 1

3 HOURS OF BOWLING FUN FOR KIDS 6 TO 12 JUST \$3.75!

WIN A THURSDAY 3-SPEED STREET MACHINE, KENNER SUPER POWERS ACTION TOYS AND MORE!

Summer Prizes! Refreshments! Bowling instruction! We guarantee that you will have a great time! We guarantee that you will have a great time! We guarantee that you will have a great time!

Olympic Bowl Brunswick  
679 Washington Ave.  
Belleville, N.J. 07109  
751-2111





**Ban the nuclear food** — Assemblyman for Belleville John Kelly and Senator John Dorsey speak out against the irradiation of food, a process recently approved by the FDA which would extend the food's shelf life.

## Kelly wants irradiated food ban

Area Assemblyman John V. Kelly, R-30, held a press conference in Trenton last week to alert consumers of legislation he introduced, which would ban food treated with radiation.

Recently, the Federal Food and Drug Administration approved the irradiation of fresh fruits, vegetables and pork, a process which extends shelf life.

Although the FDA feels that the doses of radiation used on such foods are "low level" doses,

Assemblyman Kelly feels that these levels of radiation may be harmful to consumers. The 48-page bill, approved by the FDA as H.R. 10000, which is equivalent to one million chest x-rays, Kelly commented. "The chemical changes caused by the radiation may be toxic."

Kelly cited an internal FDA memo to top agency officials which found of the 413 available

studies on irradiated food, all but 67 were worthless. Of the remaining 67 studies, half found food irradiation to be toxic and the other half concluded that it is not. At this point, the FDA decided to waive its studies requirement completely and instead base safety on theoretical calculations.

Kelly stated, "In other words, irradiation of our fruits and vegetables was proven safe on paper, instead of in the laboratory."

Assembly bill 3150 was introduced to prohibit the sale and distribution of irradiated food in New Jersey until laboratory testing can support the safety of the process. This bill will protect and insure the health of the residents of this state," Kelly commented. The bill also requires environmental impact studies to be conducted to determine the effects of irradiation facilities and the

transportation of radioactive material on communities and workers.

Kelly was commended by both health and environmental organizations for his legislative efforts.

The National Health Federation, who also opposes food irradiation, called Kelly's bill, "One of the most significant bills ever to be proposed, not only in New Jersey, but in the United States."

Dr. Walter Bernstein, President of People for the Responsible Management of Radioactive Waste, an environmental group concerned with irradiated food and irradiation plants, commended Assemblyman Kelly taking the lead against food irradiation in New Jersey.

According to a Kelly spokesman, the assembly is expected to vote on the bill before the Christmas recess.

## Planners host building debate

(continued from page 1)

additional data which was provided by both sides.

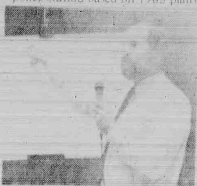
**Albanese makes an address**

After Richlan's presentation, the planning board chose not to ask Richlan or any of the panel specific questions they might have had. Instead, they turned the forum over to the public who asked plenty of questions, aired disagreements, and presented alternatives for consideration.

It wasn't until the close of the hearing that one planning board member other than Doyle became actively involved in the debate and that was Christopher Albanese.

Albanese indicated that he was prepared to cut the project down to something we can afford.

tion, but for far less money than \$5 million. In fact, he has gone on record as supporting a \$2 million police station based on 1983 plans.



Architect Frank Richlan

made by Neil Scialoja, which estimated the cost at \$24,000, square foot building rental size as

the current plan, but four-sided at \$1.6 million.

Whether or not the Planning Board will recommend scaling back the project is unclear.

While Planning Board Chairman Doyle said the project would be reviewed as is, Planning Board member Albanese's downright eager to make cuts when the finished plan arrives.

Further, the impassioned pleas from taxpayers (common at town meetings, not Planning Board sessions) may also have an effect on the Planning Board's forthcoming report.

Because as Chairman Doyle has said again and again, "We don't shut the public out ever."

By Christopher Bifari

**Ashley's**  
a sociable gathering place  
presents  
**Our All New LADIES NITE!**  
Every Wednesday 9pm - 3am

ALL MIXED DRINKS — \$1.50  
SPECIALTY DRINKS — \$2.00  
CHAMPAGNE BY THE GLASS FOR THE ENTIRE EVENING IN THE PRICE

Prizes given away during the evening will be  
**\$500 Gift Certificate to Bloomingdale's**

VIP Cards — Luncheon & Dinners for Two  
Tanning & Nail Salon Certificates  
and a bottle of  
Moet Chandon!

Join us for a great party nite!  
1065 BLOOMFIELD AVENUE  
CLIFTON, NEW JERSEY 07012  
(201) 778-2253

## Mediation resumes on October 28

(continued from page 1)

workers and administrators to reach a deal.

"On July 15, Nardiello said," an impasse by both sides," and the factions agreed to enter into state mediation, beginning with an initial session September 17, some two months later.

Of the initial session, Linfante said the mediator — an outsider agreed upon by workers and administrators — "just took in both sides." He added that a pact is seldom reached during the first mediation session.

Nardiello concurred with Linfante. "In my experience negotiations usually aren't solved the first time around."

The superintendent said, "We met with the mediator and there was no progress. He recommended that we break off mediation at that time and agree to meet again October 28."

"We set the date right there," Linfante added.

**Picketing in between**  
However, less than two weeks after the first mediation session and with four weeks until the next, the union hit the streets with their grievances — threatening a strike but willing to hold off as long as possible so as not to disrupt schooling, union leader Renna indicated.

Thus, although worker association members vow to continue the pickets until a contract is reached, an actual strike, if one occurs at all, is unlikely to be called before the October 28 follow-up mediation date.

Once a deal is reached, the administrators promise the details will be revealed.  
And to stress his belief that a deal will be reached soon, Superintendent Nardiello pointed to the results of another recent labor dispute.

"We were here until 7:30 a.m.

with the teachers," Nardiello recalled, gesturing to the room around him, "and we hammered out a deal right here in this office."

"And it's not the first time," Linfante added.

The superintendent summed up the administration's optimistic attitude from experience:

"I've been involved in education for 36 years and I've never seen an irresolvable issue," he said.

**BELLEVILLE**

October 9, 10 & 11  
Thurs. 9:30 am - 6 pm  
Fri. 9:30 am - 9 pm  
Sat. 9:30 am - 6 pm

**WALK-TO-TOY STORE**  
SALES EVERYWHERE

Participating Merchants:

- Belleville Shoes
- Charles Jewelers
- Sherman's
- Parisian Bros. Furniture
- Belleville Tee Party
- First Jersey Bank
- Pura-Tex Aluminum
- Century 21 — Homes R Us
- Crown Chevrolet

Sponsored by  
Belleville Chamber of Commerce  
It's Better In Belleville

**GEM**  
Carpets, Inc.  
237 Centre Street  
Nutley, N.J. 661-0156

**HARVEST THE SAVINGS**  
**mannington**  
**20% OFF SALE**

**mannington**  
THE SAVINGS FLOOR — HERE THE "SMILE" SINK

**HURRY... SALE ENDS OCT. 17th!!**

• Built in style  
never needs waxing,  
brighteners, stripping  
or dressing!

- BOCA
- ARISTOCOR
- LUSTRECOR

Showroom Hours:  
Monday & Friday 8:00 AM to 6:00 PM  
Saturday 8:00 AM to 5:00 PM

## FACTORY DIRECT TRUCKLOAD SALE!

**3 DAYS ONLY**

**Baldwin**  
Organs Pianos

SAT. 10/11  
SUN. 10/12  
MON. 10/13

For 3 days only, a factory truckload of famous Baldwin pianos and organs will be at the Totowa store. Every instrument on the truck is low, low priced by the Baldwin factory for this unique event. The truck has the greatest selection of Baldwin Grands, Acrosanics and Hamiltons in New Jersey!

**DON'T MISS THIS GREAT THREE STORE EVENT!**

SATURDAY — 10 AM to 6 PM  
SUNDAY — 12 AM to 5 PM  
(Totowa Store Only)

MONDAY — 10 AM to 9 PM

SAVINGS OF 30% TO 70%  
FOR THESE 3 SALE DAYS ONLY  
BENCH, DELIVERY & TUNING FREE!

SELECTED BALDWIN PIANOS AND ORGANS IN OUR STORE INVENTORY WILL BE SPECIALLY PRICED ONLY WHILE THE BALDWIN TRUCK AND FACTORY SALES REP ARE HERE.

TRUCK AT OUR TOTOWA STORE ONLY

CONVENIENT TERMS  
ARRANGED

PARAMUS  
82 Rt. 4 — East  
843-2200

TOTOWA  
225 Rt. 46 — West  
Between Totowa Cinema and Allen Kitchen  
278-1800

MONTCLAIR  
507 Bloomfield Ave.  
744-1200

**M & K CAB**  
35 Franklin Ave. Nutley

\$2.50 Local Rate  
Flat Rates Out Of Town

CALL 661-4000  
Open 7 Days  
Prompt & Courteous Service

# Belleville Times

Serving Belleville Since 1909 (USPS 349-270)

Published Every Thursday  
At 155A Washington Ave.  
Belleville, N.J. 07109

Annual Subscription \$14.00  
Senior Citizens \$7.00

Second-Class Postage Paid  
At Newark, N.J.  
Postmaster: Send address  
changes to the Belleville Times,  
155A Washington Ave., Belleville, N.J. 07109

Frank A. Orechio, *Publisher*  
Christopher Bifani, *Editor*  
Helen Maguire, *social editor*  
Michael Lamberti, *sports editor*  
Jave Tarantino, *advertising rep.*

To report news and other items  
of interest, call:  
759-3200

## Sharing the blame

This week's Crimebreaker, provided to the Times courtesy of the Belleville Police Department, focuses on the enormous problem of drunk driving.

The figures they list are shocking, but the solutions are simple. If you're drunk, don't drive. If your friend is drunk take away the keys.

Unfortunately, the simplest solutions are the ones which are most often overlooked. The result is an annual death toll of 44,000 people — nearly as much as the number of Americans who died during the entire Viet Nam war.

Understandably, state legislatures are cracking down on drunk drivers — with stiffer fines, license revocations, and even jail terms.

There is no doubt that this has deterred some drunk drivers, but we think the law lets his 'partners' go free.

Who's the partner? The last person who saw the drunk driver before he or she took to the road. While it's true that some drunk drivers drink in solitude before

driving, the majority drink with friends, in public taverns, or at parties.

In most cases of drunk driving tragedies, the drunk driver who perpetrated the act was seen — and allowed to leave — by someone else.

Someone who could have "taken away the keys" as the Belleville Police Department suggests, or offered to put the intoxicated time bomb up for the night.

Either solution — both wonder fully simple — is a guaranteed way to prevent another coldblooded statistic.

Currently, state legislatures are looking into making the hosts partially liable for drunk driving accidents, beginning with public bartenders.

We think this is worth pursuing. In the meantime, although it is the drunk driver who bears the bulk of the punishment, it is both the drunk driver and the last person to see him or her go, that must share equally the blame, the shame and the guilt.

## Custodians demonstrate

Fifty-seven members of the Belleville Custodian and Maintenance Workers Union have carried on demonstrations at Schools 3, 5 and 10.

Why the demonstrations? Well, it seems the group has been actively seeking a work contract since July 1 — and at an impasse since July 15. A mediator has been called in and following an unfruitful meeting Sept. 17, is scheduled to mediate again Oct. 28.

The matter that troubles the custodians above all else is recalling events of the last contract which was in place and expired July 1. The custodian and maintenance personnel staffs are working without a contract. They remember it took almost a year and a half to consummate the last contract — and they refuse to repeat the performance this time.

The custodians and maintenance staff members are probably the lowest paid public employees in the Township of Belleville. They have families. They have homes. They have mortgages. They have school-age children, some in grammar school, others in high school — and still others attending college or entering college. This all takes money. Historically, employees on a fixed salary, more than likely, are living on next week's pay. We would expect this truth to apply to custodian and maintenance workers as well.

The give and take of labor negotiations traditionally involves time. It seems reasonable to conclude that school officials would have addressed the expiring contract prior to July 1.

Assuming this conclusion to be a fact, it would appear school officials have been concerned over the details of this contract for at least six months. If they haven't been, they should have been.

For a reason that escapes us, often public employees find themselves in the same bind as the Belleville Custodian and Maintenance Workers Union members are confronted with today. Over in Nutley, the principals and school officials have been negotiating for two years — and still no contract — an unacceptable negotiation standard by any measure.

We believe school officials responsible for negotiating an employment agreement with the Belleville Custodian and Maintenance Workers Union should get down to real, serious, bottom line negotiations — be fair to the employees — be fair to the taxpayers and get the matter over with. Maybe the public would be best served if labor negotiations were out in the open and thus permit the public to determine which party is unfair — and which party is obstinate.

At this point, no one is claiming that either party to the contract is failing to negotiate in good faith. Given the circumstances, it is plausible to assume the next negotiation session to be conducted by an outside mediator may put this contract to bed. At least we hope so. The longer an impasse lasts, the worse it is for employees, the School Board members, the school system — and the most important people affected — the students. Fair minds on both sides should prevail.

## Briefly deadline

The deadline for Belleville Briefly releases is the Monday before each Thursday issue.

To make sure your releases reach the newsroom in time, mail by the preceding Friday to: The Belleville Times, "Belleville Briefly," P.O. Box 56, Belleville, N.J. 07109.

## 'Doc' Ellis Stadium ...

To the editor:

As a former athlete and alumnus of BHS I was deeply saddened by the news of Doc Ellis' passing. As everyone who ever performed for BHS on their playing fields surely knows, Doc Ellis was an institution. He was always there when you needed him.

He was a lifelong member of the Varsity Club and a man who always gave of himself for the Town of Belleville.

I could go on and write of all the

positive influences which Doc had on all of us who ever played sports for BHS, but that, as we all know is not really necessary, for Doc was a man who gave all of himself for the youth of Belleville and I can think of no better tribute than to rename Municipal Stadium to Doc Ellis Field. I really think he would have liked that and there is no man more deserving of that honor than Bill "Doc" Ellis.

Joe Valvano  
Class of 1971



## Letters to the Editor

## Citizens, where are you...

To the editor:

Mr. Bifani, your editorial in the September 18 edition of the Belleville Times was one of the finest I have ever read. "Tax business is Monkey Business," hit the proverbial nail on the head.

I would appreciate your printing some of my comments further on the subject. Concerned citizens? Where are you?

In the Township of Belleville there must be several thousand home owners who are paying their taxes, and understanding grumbling about them. Where are you when the Town Meetings are held? Where are you when the Concerned Citizens of Belleville try to raise membership? Where are you when the CCB hold meetings to inform citizens and taxpayers what is going on in the Township of Belleville?

Having attended several meetings I can not help but notice that 75 percent or more of the attending are Senior Citizens. We Senior Citizens are being asked to contribute to the education of your children and the running of our town on a "Fixed Income." The younger families, the parents of the children, are absent. There is a definite apathy in that too many of the younger land owners take the indifferent attitude that "nothing can be done about increases in taxes."

This feeling is wrong. All you have to do is attend a few meetings to learn what has been accomplished and what can be accomplished when individuals group together to show some force. The CCB is an organization with dedicated officers

who have given of their time away from their professions and families and have strived for all in Belleville to get a reduction in taxes. We all will benefit, both young and old taxpayers. You, the younger group who show this apathy, have much more to gain because you shall be here much longer.

I read the Newark Ledger and constantly am amazed at the coverage in the media about our neighbor Nutley. Are the public officials in our neighboring town more cost conscious? Are they better informed about grants etc. that may trim budgets? Are they better managers? Nutley is talking about an addition to their library. No bookering, no name calling, the public officials discuss their problems with the taxpayers, at least this is the way it appears in the Newark Ledger.

A few days ago the Ledger quoted an official from Nutley stating: "You could build an ultra modern office building with granite and it would not cost more than \$75 a foot." Maybe he is correct, maybe he is incorrect. My math tells me if he is correct then maybe the CCB is also correct when their claim that a police building could be built for much, much less than the proposed \$39 to \$4 million.

Let's see — 20,000 square feet times \$75 equals \$1,500,000.00. Young home owners — come to the meetings, join the CCB, spend \$2 for membership and see what your taxes buy and where the dollars go.

It just may open your eyes!

Michael Capaner  
Fairway Ave.  
Belleville

## Praises Commissioner Grande...

To the editor:

Too many times words of appreciation go unused. We all tend to voice criticism more readily than praise. Well, this is a letter of appreciation. We'd like to publicly express our appreciation to the commissioner of public works for the Township of Belleville, Mr. Joseph Grande.

His help and assistance has shown us how understanding he is of property owners like ourselves who are trying to improve Belleville by improving their own property.

A year ago we bought a "handyman" special in the Valley. It was literally only to live in at the time and there were nothings from the Belleville Board of Health scattered throughout the garbage and unsanitary refuse which was left here for us to inherit.

We immediately started cleaning out the years of neglected waste and it seemed as if we'd never get this house ready to live in. Mr. Grande's staff which includes Mrs. Grande and a man named Raymond (both of whom I know from numerous phone conversations only) were always helpful at making arrangements the garbage contractors would balk at the sight of our plentiful contributions to them.

We were also fortunate enough to avail ourselves of the township dump truck

which was loaned out to residents on the weekends. That truck hauled away tons of old plaster for us. We hear now that this option for do-it-yourselfers in Belleville is no longer possible due to huge escalations in insurance and dumping costs. But for us, it was there at the time and we are grateful.

Last week was the culmination of our property clean up. I don't think the year had been attended to in over 15 years. We never dreamed so much would come out of this yard, old tree limbs, bushes, rocks, even a hidden sidewalk. The public works crew was shocked by the sight it met Monday morning in front of our house. They didn't think they'd be able to take it because of its enormity. But our story has a happy ending.

After several phone calls of explanation to Mrs. Grande, Raymond, and the assistant superintendents of Public Works, our yard refuse of many neglected years was hauled away. We were told that the "word" had come from Mr. Grande and that is why I have written this letter of appreciation. I've never even spoken with Mr. Grande, so through the printed word I'm saying — "Thank you for your understanding."

Sincerely,  
Debbie Norden  
Stephens Street

(Continued page 8)

Over the past several years hospital care costs have outpaced the rate of inflation. Costs of medical care in 1985, when inflation was 3.7 percent, rose by 6.2 percent. The gap will be wider this year. As a result, the costs of Medicare have also risen. Now Medicare pays less than half of an older person's total health care bill. On average Medicare patients are spending about \$1,800, or about 15 percent of their income, this year on medical care — many pay more.

## Golden Comments

James R. Golden

A Medicare patient without supplemental health insurance who is hospitalized twice in 1986 is expected to pay out of pocket almost \$3,000.

Millions of older Americans depend on Medicare for basic health care. Since 1965, when the program was enacted, they paid through payroll taxes and general revenues for the promise of Medicare benefits upon reaching 65.

Medicare recipients have also borne a significant share of the program costs through hospital co-payments and deductibles, and premiums for physicians coverage. These costs to recipients totaled over \$15.1 billion in 1984. For these reasons Medicare has broad support.

But Medicare costs are exploding, despite recent major reforms in the way hospitals and other providers are paid. Rising program costs—up 12.4 percent in 1985 compared with 1984—have led Congress to propose converting Medicare from a health insurance program for all older Americans to a welfare program which would vary coverage with income. Various "means testing" options have been proposed.

• Giving Medicare benefits only to those with incomes below a certain level.

• Charging higher premiums for those with incomes above a certain level.

• Taxing Medicare benefits in much the same way Social Security cash benefits are now taxed.

The American Association of Retired Persons (AARP) opposes means testing. In any case, Medicare efforts to shift the program from an insurance base to a welfare base would quickly erode taxpayer support for a program in which millions of older Americans depend.

Medicare means testing would do virtually nothing to solve the problem of rapidly rising health care costs in this country. It simply would shift more of the bill onto the elderly.

Medicare means testing would require a complex and costly administrative structure of income and assets checks. In fact, Medicare is already targeted to people who can least afford health care costs.

• Sixty-five percent of Medicare reimbursements for care of older people benefit those with incomes under \$15,000.

What would be the end result of Medicare means testing? Minimum financial gain and maximum loss of support for a program in which this nation's oldest and disabled citizens depend for basic medical care.

The AARP urges all people receiving Medicare coverage to write their legislators in Congress to oppose these radical changes in Medicare by explaining that they have paid into this fund which promises them medical coverage which the federal government would now try to take away from them — a dastardly deed that would be a breach of contract and a denial of services which have been paid for in advance.

Maybe the Washington "give more consideration for" the medical care of its aged who have paid their way, and less consideration to foreign governments and military aid to warring countries we'd all be better off.

Why give \$3 billion to Israel and \$2.1 billion to Egypt and allow our own people to suffer without medical care they can't afford?

Any member of Congress who would support the changes in Medicare now under consideration should be run out of Washington on a rail and never gain be allowed to return.



By Commissioner  
Ralph J. DiRuggiero

The proposal to build a new municipal building and a more recent plan to erect a new police headquarters and municipal court behind the existing Town Hall have created at multistorm in our town, with charges and counter charges flying back and forth. Each side advocates its position; the press covers the controversy in excruciating detail, and some times what started as a debate turns into a free-for-all.

That's all well and good, really, because the beauty of the democratic system is that all parties have a right to advocate their positions vigorously, and the press has the right indeed, the obligation to report both sides of any issue accurately and in full.

I've always thought that we in Belleville have an especially lively tradition of airing our political and civic differences in public, and when all is said and done, I think that's a plus for our town and certainly preferable to communities in which decisions are made by a select few power brokers with little or no input from the public.

I firmly believe that public affairs are public, punching bags, where the press the citizens look to when something goes wrong, and we're the ones who have to take the heat on controversial issues. While I sometimes get weary of taking abuse, I never question the right of the public and press to complain, to demand and to advocate, and if that's done loudly, so be it.

But all this hurly-burly over controversial issues sometimes obscures the good things that are happening because of the cooperation of our mayor, my fellow commissioners and the citizens who

work to make Belleville a better place. Belleville is not without its problems, certainly, but I believe that we sometimes don't give our town enough credit. I often wish we in Belleville could create the kind of pride in our community that the State of New Jersey is finally feeling under Governor Tom Kean. I'm delighted that we in New Jersey are finally taking pride in our state. I only wish we Bellevillites would start doing the same.

What good things are happening in Belleville? I spent a few minutes thinking about that the other day and came up with a surprisingly lengthy list.

The new public safety building, despite the reservations some of our citizens have about its cost, will give our police department the tools it needs to do its job effectively. Just as you can't send a policeman out on the beat without a gun, we must provide our men in blue with the resources they need to do their job, and the new public safety building will do that. Whatever objections some of us have toward the new building, we all share the goal of fighting crime,

and I believe the new building will help us toward that goal. We in Belleville have been talking about improving our police station since the late 1940s; now we're finally doing something about it.

Our police department has launched a series of initiatives recently to cut down on crime. We have foot patrols now along Washington Avenue, Franklin Avenue and Belmont Avenue, and we've joined a "borderline commission" with Newark and other towns bordering Newark in an attempt to coordinate law enforcement activities. We've increased the number of patrol posts in town and we're reactivating our narcotics unit in response to the drug scourge and our Neighborhood Crime Watch program is expanding thanks to concerned residents who want to keep Belleville safe.

This week is Fire Prevention Week, and our Fire Department is augmenting its usually fine work with town-wide fire inspections and fire drills designed to heighten people's awareness of methods of preventing fires.

Though it's not always apparent, our town's infrastructure

has been undergoing quiet yet significant improvements. Roads are being repaved, curbing replaced and water mains are being improved throughout our town.

Washington Avenue, too, is showing signs of a resurgence. Two businesses on the Avenue destroyed by fire last year have quickly rebuilt. Bigelow Motors at the south end of the Avenue has expanded, and new businesses have opened. Clearly, more needs to be done, but there's solid evidence that businessmen see potential in Belleville's downtown.

Developers, too, see Belleville's appeal as an attractive middle class community. The Zoning Board recently approved a town house condominium development between Jorammon and Little Streets off Washington Avenue, and I believe we'll continue to see interest in our town by developers.

Our town's senior citizen center is undergoing an expansion funded through the Community Development Block Grant program. We'll soon be starting a Carrier Alert program for our elderly residents who need someone to check on them periodically.

Our library, which thanks largely to the efforts of Trustee James J. Cozzarelli, Jr. has a beautiful new children's room, is also steadily improving in many other areas under the leadership of its director, David Brant, and is fast becoming a first-rate cultural center.

I could go on, listing accomplishments, improvements and initiatives both large and small. But I think I've made my point that while controversies and problems get more than enough attention, we often don't pay enough attention to the good things happening in our town.

## Citizens Forum

## Belleville Times Columns

The Times' editorial columns — use the Citizens Forum section, Golden Comments, Citizens Forum and Bifani on Belleville are typewritten and thoughtfully prepared. Citizens Forum is also not necessarily the opinions of this newspaper, wishing to comment on any town ship topic.

Golden Comments by Jim Golden, appears weekly. Bifani on Belleville appears monthly in the first issue of each month. Bellevillites wishing to respond may — As always, our letters to the editor section is open to all, for topics in and out of town.

## JUST NAILS

260 Belleville Ave.  
Upper-Meritown

### Now Open 'Til 8

Tuesday - Friday

Featuring - The Nail Gel System

- Go Three Weeks or Longer Between Appointments
- Stronger Than Wraps
- Faster Application

Creators of the Air-Brushing System for Nails

Call 744-3857 for Appt.

## Frade's DELI\*

### Third Big Week GRAND OPENING SPECIALS

FREE DELIVERY

BAKED  
ROAST  
BEEF

\$2.29  
lb.

OUR OWN  
TURKEY  
BREAST

\$2.39  
1/2 lb.

Land O'Lakes  
AMERICAN  
CHEESE

\$1.29  
1/2 lb.

LEAN DOMESTIC  
BOILED  
HAM

\$2.09  
1 lb.

FINLANDIA  
SWISS  
CHEESE

\$1.69  
lb.

HORMEL  
DI LUSSO  
GENOA

SALAMI

\$2.39  
1/2 lb.

EXTRA  
LARGE  
EGGS

89¢  
doz.

IMPORTED  
ITALIAN  
TOMATOES

35 oz. can  
89¢

HORMEL  
SLICING  
PEPPERONI

\$1.79  
1/2 lb.

WE ACCEPT  
FOOD STAMPS

311-313 Union Avenue  
Belleville • 759-3569

# INTRODUCING NUTLEY SAVINGS' TELEPHONE RATE LINES

Now you can call Nutley Savings' New Telephone Rate Lines, 24 hours a day, for current quotes on available rates for Certificates of Deposit, Money Market Accounts and Mortgage, Home Improvement and Auto Loans.

Our special seven days a week phone lines give you up-to-the minute information on current interest rates, qualifications and terms for all your financial needs.

FOR INFORMATION ON CERTIFICATE OF DEPOSIT AND MONEY MARKET RATES:

CALL THE SAVINGS ACCOUNT RATE LINE\*

**661-3915**

FOR INFORMATION ON MORTGAGE, HOME IMPROVEMENT AND AUTO LOAN RATES:

CALL THE LOAN RATE LINE\*

**661-3917**

\*Rate Lines listed with New Jersey Bell Information

## Nutley Savings

AND LOAN ASSOCIATION

celebrating  
"Our first 100 years"

MAIN OFFICE:  
371 Franklin Avenue • Nutley, N.J. 07110 • 661-3800  
BRANCH OFFICE:  
221 Washington Street • Newark, N.J. 07102 • 625-7080



With moccasin versatility, anything goes! The Florsheim COMO will span your wardrobe, from suits to casuals in perfect style. And soft leather wraps around your foot to give you glove-like comfort and fit. See it now...

## Plaza Bootery



Shoe  
Repair

483 Franklin Ave.  
Nutley, N.J. 667-8964

Free  
Parking



### BROOKDALE SPLIT

Lovely L.R., formal DR, 3 bdrms, 2 1/2 baths, rec rm, laundry rm, all in impeccable condition. Asking \$227,900.

Also

Apt for rent. Beautiful 3 bdrms, 1 1/2 baths, C.A. \$900 mo. Info call

## MARGIE McDONALD

Realtor

316 Broad St., Bloomfield  
429-7372

## Cancer fighting computer installed at Clara Maass

Clara Maass Medical Center has recently installed a new computer called the MicroVax II Treatment Planning System to assist in the planning of radiation treatment for oncology patients. The MicroVax II is a state-of-the-art computer used to map out the "blue prints" for the area of treatment in cancer patients who require radiation therapy.

"The primary purpose of the system is to tailor radiation treatment to the patient's particular needs by pinpointing exactly what areas need certain doses of radiation. In this way, we can minimize or eliminate any side effects of conventional treatment," explained Dr. Corinne Devereux, Medical Director, Radiation Oncology.

The MicroVax II computer is hooked up to a monitor which shows the dose distribution of the radiation beam three dimensionally throughout the area to be treated. It is also capable of doing Brachy Treatment Planning which involves dose calculations

for radioactive implants, a technique never before computerized at the Medical Center.

"Any treatment a patient received can be determined before the actual procedure is started by customizing a blue print. This computer is a tremendous tool for accurate treatment planning by determining the exact target area to receive the radiation," stated Ken Kopecky, radiation physicist.

The Treatment Planning System also works with information provided by a CAT Scan to further improve the accuracy of the treatment. A CAT Scan shows the volume of a cancerous tumor. This information is fed into the computer and combined with the three dimensional aspect of the computer, provides for accurate treatment planning.

Another function of the MicroVax II is its word processing capabilities as well as future programming capability to include patient scheduling, billing and general correspondence.

## Michael Parrillo joins Weichert Realtors team

Belleville Michael Parrillo was welcomed last month as a real estate professional to Weichert Realtors' newly established Clifton office. The announcement was made by office manager Gary Molner.

Parrillo decided on a career with Weichert because "Weichert is a large professional organization, yet a very personable organization. The services offered home buyers and sellers, such as mortgage assistance to equity advance pro-

grams are outstanding. Also Weichert associates receive unlimited support when training," Parrillo said.

Parrillo attended Fairleigh Dickinson University where he studied management. Prior to joining the Weichert team, he worked in management at EBI Inc.

He and his wife, Theresa have three children, Kimberly, Michael and Brian.

## S. Sbarra receives chiropractic degree

Samuel Sbarra, son of George Sbarra of Belleville, received a doctor of chiropractic degree from

Sherman College of Straight Chiropractic during commencement exercises held on the college campus Sept. 20 in Spartansburg, S.C.

Sbarra received a bachelor of arts degree from Glasboro State College and attended Jersey City State College prior to enrolling at Sherman College.

Sbarra completed an internship at the Sherman College Health Center. He externed in the office of Dr. Arnold Taub, a practicing chiropractor in Nutley.

WE'RE FIGHTING FOR YOUR LIFE

American Heart Association

### WESTERN'S THE ONE

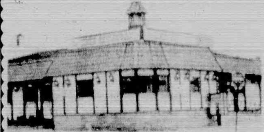


CLERICAL  
Typists and Transcribers  
Secretaries — Clerks  
Bookkeepers  
Word Processors  
MARKETING  
Product Demonstrators  
Convention Aides  
Sales and Helpers  
FACTORY WAREHOUSE  
Assemblers and Packers

BLOOMFIELD  
554 Bloomfield Ave  
748-1914  
LYNDHURST  
35 Ridge Road  
896-1886  
FAIRFIELD  
575-0021  
CLIFTON  
472-8333  
JERSEY CITY  
792-0066

Western  
TEMPERARY SERVICES  
101 W.F.P.

### The Choice of the People



7 Days  
24 Hours  
Delicious  
Salad Bar!  
Italian  
Specialties!  
Steaks & Chops

All baking done on premises • Homemade pastries  
Children's Menu Available  
Special Breakfast Menu 6:11 a.m.  
Daily Businessman's Lunch 11 a.m. - 3 p.m. Salad Bar Open 11 a.m. - 10 p.m.  
A LA CARTE and COMPLETE DINNER MENU

### We're Always Open

**WILLIE'S**  
DINER-RESTAURANT

9 State St., Bloomfield Call 748-7414

### STOREWIDE

## COLUMBUS DAY SALE!

... Fri.-Sat.-Mon. Only ...

## 20% Off All Full Figure Fashions

Elegant Fashions in  
LARGER SIZES  
Sizes 14 to 46



Jinny  
Re's

Store Hours: 10-6  
Thurs. 10-8  
Closed Sunday  
Major Credit Cards Accepted

611 Bloomfield Ave. Montclair  
783-8494

## HOLLYWOOD

## WRAP UP HOLLYWOOD

... And Own These 22 Movie Giants for Only \$29.95 Each



AT

## CURRY HOME VIDEO

(No. 1 Video Club in the USA with over 10,000 titles)

Pre order any of the above titles and get a FREE rental on same visit at 1273 Broad St. Bloomfield

Have you visited our new location with new and used color TVs at prices starting at \$100 390 Broad St. Bloomfield

We have the cheapest cable company in existence. It's called a VCR

Players only start at \$199



TEACHERS  
Retail Management  
Chefs OFFICE MANAGERS  
Kitchen Supervisors CLINICAL CHEMISTS  
Customer Relations Rep. Assistant Managers  
Executive Secretaries HOTEL MANAGEMENT  
Bankers PRODUCTION MANAGERS Fast Food Managers  
Airline Food Service Hair Stylists Air Traffic Controllers  
SALES PEOPLE Convenience Store Managers  
Travel Agents



### THEY DARED TO COMPARE

Opportunity for Opportunity  
Benefit for Benefit  
Dollar for Dollar  
Career for Career  
Future for Future

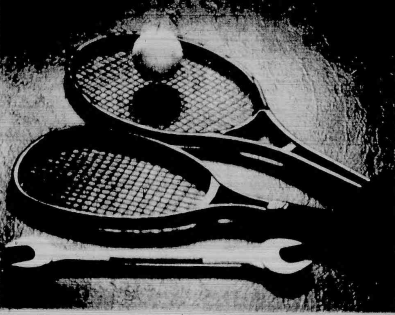
Think about it. About your future. About your benefits, about your opportunities. Now think about where your future is headed. These McDonald's franchises are yours to own. If you dare to compare, call or send your resume to

SUZANNE CHRISTIE  
McDonald's Corporation  
1455 Broad Street, Bloomfield, N.J. 07003  
(201) 336-5300

Always an Equal Opportunity Employer. M 186



## SATURDAY SERVICE.



We work on Saturday  
... so you can play!!

Our parts department is now open  
every Saturday from 9 am to 1 pm



Mr. Goodwrench

**Crown Chevrolet**

New Jersey's Chevrolet Underpricer  
514 Washington Avenue, Belleville, 201-759-4200

# MONDAY, TUESDAY NITE SPECIALS!

4 PM 'TIL CLOSING

"Monday  
Nite"

Buy 1 Pie and get  
any sandwich for

**\$1.00**

Pick up or  
Delivery

"TUESDAY"

1 Large  
PIE **\$2.99**

Pick up or  
Delivery

LUNCH SPECIAL

Monday thru Thursday  
a complimentary slice pizza or cup  
of soda with any menu purchase

11am  
2pm

**Ritacco Bros. Pizzeria**

18 WASHINGTON AVE. NUTLEY 667-9600



Dual Grand Reopening — Celebrating the grand reopening of Frade's Deli and neighbor Good Health Pharmacy are 11 to 13 Commissioner Ralph DiRuggiero, Chamber of Commerce President Shirlee Sherman,

Good Health owner Bill Lynch, deli owner Mike Frade, chamber directors Vincent Frantantoni and Virginia Ng, and chamber secretary Susan Caponi. (Photo by Jaye Tarantino)

Nutley Savings & Loan Association  
Salutes the

## Fourth Annual Nutley/Belleville Columbus Day Parade

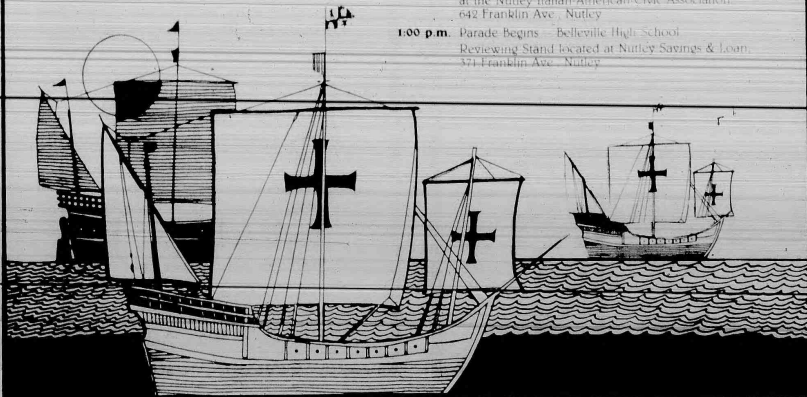
Sunday, October 12th.

Best Wishes to Grand Marshall James Piro,  
Keynote Speaker Frank Cocchiola and Bell Signorinas  
Jodi Nosti and Christine Albanese.

### PARADE DAY SCHEDULE

10:00 a.m. Keynote Speech & Coffee and Pastry Reception  
at the Nutley Italian-American Civic Association  
642 Franklin Ave., Nutley

1:00 p.m. Parade Begins — Belleville High School  
Reviewing Stand located at Nutley Savings & Loan  
371 Franklin Ave., Nutley



# Timberland



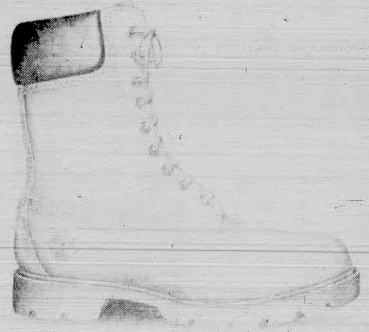
#12281

**\$98<sup>95</sup>**



#10061

**\$84<sup>95</sup>**



#49081

**\$74<sup>95</sup>**

**ATLANTIC  
UNIFORM  
IS TIMBERLAND.**

444 Washington Avenue  
Belleville • 751-1242

**Timberland**  
MORE QUALITY THAN YOU MAY  
EVER NEED.



## Ban bus, purge Town Hall...

(Continued from page 4)  
To the editor:

It seems to me that we in Belleville have put up long enough with these double length buses with an accordion in the middle. These buses belong on runs where they can be useful by carrying more passengers than regular sized ones. The other day at 2 p.m., I was waiting for the light to change in the inside traffic lane on Joramelon St. and Franklin Ave., going West, with 3 cars behind me. All four of us had to back up to make room for one of those "articulated" buses attempting to negotiate a right hand turn from Franklin Ave. to go east on Joramelon.

But why, you ask, should I bother to comment about this assinine decision to place maxi capacity buses on mini passenger runs, even though it galls me to see them running around without any paying riders (the driver does not pay for the privilege), with all the big problems facing us in Belleville? Because it demonstrates that bureaucrats don't give a damn about efficiency, or about you and me. It explains for example how Belleville's five commissioners (with one of them designated "the Mayor"), continued to execute "their thing" in the face of public outcry and uprising, even to the point of locking them out of a public meeting, and changing the format of the very next meeting

by placing the "Hearing of Citizens" at the very end of the agenda, when the hour has grown very, very late, in an arrogant attempt to stifle them, frustrate them, and to wear them out. For shame!!!

It explains how they can squander some \$470,000 of our precious tax dollars, contributed to their coffers by wage earners and senior citizens alike, without the slightest consideration of the effect on the taxpayers' pocketbooks.

It explains their "public be damned attitude" by having \$5 million figures "fall out of their mouths" like it is a mere begatelle.

It explains their arrogance by authorizing the expenditure of another \$294,000 to be squandered on the same "hand-picked" architect, who got us in the mess we are in with his "One of a kind in the nation" edifice, totally out of character when situated next to our almost historic Town Hall.

What's more, this new expenditure was authorized by the commissioners contrary to accepted procedure. BEFORE alternate plans to improve Public Safety facilities were submitted to the Planning Board, an advisory body, supposedly existing to protect the citizens' interests, by approving or disapproving of plans the commissioners may concoct.

Incidentally, the members of the Plan-

ing Board, from the chairman on down, most explicitly deny, EVER having been informed, or given plans for the original ill fated Town Complex as designed by "our architect" Frank Richlan. Who knows, if given the opportunity, they might have given it the thumbs down, or perhaps given the opinion of "extravagant," "outrageous" or just plain "not needed," which would have given the taxpayers the right to petition, which by their tactic, we were deprived of.

Given that right, there may not have been a \$10 million Bond Ordinance. There would not have been the squandering of some \$470,000. There would not be the "additional" authorization of \$294,000, to be squandered once again for the design, this time, perhaps a baby Taj Mahal.

What Belleville needs is the purging of Town Hall. What Belleville needs is reorganization and utilization of its existing facilities, creating the necessary additional "elbow room" for the Public Safety Dept. After a very careful, in depth study of their needs, it has become evident, that Belleville's taxpayers do not have to go deeply in hock to satisfy their needs 100 percent.

Belleville's taxpayers also cannot afford to get clobbered again like we did this year with our tax bill. If you agree, become "concerned." Concerned enough to join the fight to return Belleville to its rightful owners, the citizens.

## Crimebreaker!



### Drinking & Driving

People who drink and drive are the major safety problem on our highways. Today in the United States there are about 157 million drivers and over 110 million drinkers. About 44,000 people die each year on U.S. highways. Alcohol is a factor in at least half of those deaths. Each year drinking and driving results in arrests of over one million people, costs of several billion dollars and serious injuries to about 650,000 people.

How alcohol affects you physically:

1. It is absorbed quickly into the bloodstream, because it doesn't need to be digested.
2. It slows thought processes in the brain, numbs brain cells, and affects all major organs.
3. It is collected and processed slowly by the liver until it's removed.

Alcohol is a toxic drug that can create tolerance, dependence and withdrawal symptoms.

How alcohol affects your driving skills:

1. Causes loss of concentration. Drinking can cause drowsiness and decreases alertness.
2. Vision problems. It can cause double vision and blurring. It also reduces side vision, making it hard to see approaching vehicles from either side.
3. Poor judgment. It dulls areas of the brain that enables people to make sensible, safe decisions.
4. Slower reaction time. Drinking slows reflexes and interferes with coordination.

All fifty states have laws against DWI, and many states have recently made their laws tougher. Drunk or impaired drivers face larger fines, longer jail terms and longer loss of drivers licenses. They may have to pay higher insurance premiums too. Many states have now mandatory sentences for anyone convicted of DWI.

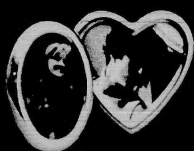
Alternatives to drinking and driving. The best and safest advice: DON'T DRINK! Insist on your right not to drink. Ask for juice, soda, or any nonalcoholic drinks. If you choose to drink take these steps to protect yourself and others:

1. Set a limit and stick to it.
2. Choose a driver who agrees not to drink.
3. Drink slowly.
4. Eat before or as you drink. Food in your stomach slows down the absorption of alcohol into your system.
5. Stop in time. Be sure your body has had time to eliminate the alcohol from your system.
6. Be honest with yourself. Alcohol affects all of the skills that are needed to drive safely.
7. Know what you are drinking. Know what and how much is in each drink.
8. If you have been drinking have a sober friend drive you home. Take public transportation. Stay overnight.
9. If a friend has had too much to drink, don't let them drive. Take away the car keys.
10. Protect yourself with safety belts.

Do your part to prevent injuries and death  
BE SMART — DRIVE SOBER

## JOIN OUR

*Holiday Club*  
**FREE CASH PAYMENT**  
**AND**  
**FREE VALUABLE GIFT**



\$5 Club  
Choose a 2 1/2" x 3" or 3" x 3" frame.



\$10 Club  
Choose a 2 1/2" x 3" double heart frame or 3 1/2" x 5" frame.



\$20 & \$25 Clubs  
Choose a 5" x 5" heart-shape frame or 5" x 7" frame.



\$50 Club  
Choose one of two 8" x 10" frames.

Choose one beautiful solid brass picture frame for each club opened. Stop into any one of our branch offices and see these beautiful frames on display. Come early for the best selection, and open your Holiday Club at any office of The Trust Company.

But Hurry! Supplies are limited! **OPEN YOUR CLUB TODAY.**

**CALL TOLL FREE 1-800-223-BANK**  
**THE TRUST COMPANY**  
OF NEW JERSEY



*The Billion Dollar Bank with Heart*



Executive Office Journal Square, Jersey City, NJ (201) 420-2500  
Offices throughout Bergen, Essex, Hudson, Middlesex, Morris & Passaic Counties • Member FDIC

### ANNOUNCEMENT

DR. WAYNE JAMES CAPUTO announces the opening of his office for the practice of **PODIATRY-MEDICINE AND SURGERY OF THE FOOT, SPORTS MEDICINE AND DIABETIC PROBLEMS OF THE FOOT** at:



DR. CAPUTO  
Podiatrist

**The Clara Maass**  
**Professional Center**  
5 Franklin Ave. - Suite 108  
Belleville, N.J. - 751-7752

Dr. Caputo received his professional training at the New York College of Podiatric Medicine. His post graduate training consisted of a two year foot surgical residency at Baptist Medical Center, New York where he served as the chief podiatry resident. He is presently entered into group practice in Roselle Park.

Day, Evening & Saturday Hours Available

### COMPLETE HAIR CARE

from the simple  
to the ultra-chic



- Nail Art With Original Designs
- Pedicures • Electrolysis • Waxing
- Tanning Salon - SCA Wolfe System
- Swedish Massage By Appt.

**Studio One**  
Hair Design

1095 Broad St. Bloomfield • 338-9777



# Teenagers from and

• All major credit cards accepted

## Ban bus, purge Town Hall...

(Continued from page 4)  
To the editor:

It seems to me that we in Belleville have put up long enough with these double length buses with an accordion in the middle. These buses belong on runs where they can be useful by carrying more passengers than regular sized ones. The other day at 2 p.m., I was waiting for the light to change in the inside traffic lane on Joralemon St. and Franklin Ave., going West, with 3 cars behind me. All four of us had to back up to make room for one of those "articulated" buses attempting to negotiate a right hand turn from Franklin Ave. to go east on Joralemon.

But why, you ask, should I bother to comment about this assinine decision to place "maxi-capacity" buses on "mini-passenger" runs, even though it galls me to see them running around without any paying riders (the driver does not pay for the privilege), with all the big problems facing us in Belleville? Because it demonstrates that bureaucrats don't give a damn about efficiency, or about you and me. It explains for example how Belleville's five commissioners (with one of them designated "the Mayor"), continued to execute "their thing" in the face of public outcry and uprising, even to the point of locking them out of a public meeting, and changing the format of the very next meeting

by placing the "Hearing of Citizens" at the very end of the agenda, when the hour has grown very, very late, in an arrogant attempt to stifle them, frustrate them, and to wear them out. For shame!!! It explains how they can squander some \$470,000 of our precious tax dollars, contributed to their coffers by wage earners and senior citizens alike, without the slightest consideration of the effect on the taxpayers' pocketbooks.

It explains their "public be damned attitude" by having \$5 million figures "fall out of their mouths" like it is a mere begatelle.

It explains their arrogance by authorizing the expenditure of another \$294,000 to be squandered on the same "hand-picked" architect, who got us in the mess we are in with his "One of a kind in the nation" edifice, totally out of character when situated next to our almost historic Town Hall.

What's more, this new expenditure was authorized by the commissioners contrary to accepted procedure. BEFORE alternate plans to improve Public Safety facilities were submitted to the Planning Board, an advisory body, supposedly existing to protect the citizens' interests, by approving or disapproving of plans the commissioners may concoct.

Incidentally, the members of the Plann-

ing Board, from the chairman on down, most explicitly deny, EVER having been informed, or given plans for the original, ill-fated Town Complex as designed by "our architect" Frank Richlan. Who knows, if given the opportunity, they might have given it the thumbs down, or perhaps given the opinion of "extravagant," "outrageous" or just plain "not needed," which would have given the taxpayers the right to petition, which by their tactic, we were deprived of.

Given that right, there may not have been a \$10 million Bond Ordinance. There would not have been the squandering of some \$470,000. There would not be the additional authorization of \$294,000, to be squandered once again for the design, this time, perhaps a baby Taj Mahal.

What Belleville needs is the purging of Town Hall. What Belleville needs is re-organization and utilization of its existing facilities, creating the necessary additional "elbow room" for the Public Safety Dept. After a very careful, in depth study of their needs, it has become evident, that Belleville's taxpayers do not have to go deeply in hock to satisfy their needs 100 percent.

Belleville's taxpayers also cannot afford to get globbered again like we did this year with our tax bill. If you agree, become "concerned" Concerned enough to join the fight to return Belleville to its rightful owners, the citizens.

## Crimebreaker!



### Drinking & Driving

People who drink and drive are the major safety problem on our highways. Today in the United States there are about 157 million drivers and over 110 million drinkers. About 44,000 people die each year on U.S. highways. Alcohol is a factor in at least half of those deaths. Each year drinking and driving results in arrests of over one million people, costs of several billion dollars and serious injuries to about 650,000 people.

How alcohol affects you physically:

1. It is absorbed quickly into the bloodstream, because it doesn't need to be digested.
2. It slows thought processes in the brain, numbs brain cells, and affects all major organs.
3. It is collected and processed slowly by the liver until it's removed.

Alcohol is a toxic drug that can create tolerance, dependence and withdrawal symptoms.

How alcohol affects your driving skills:

1. Causes loss of concentration. Drinking can cause drowsiness and decreases alertness.
2. Vision problems. It can cause double vision and blurring. It also reduces side vision, making it hard to see approaching vehicles from either side.
3. Poor judgment. It dulls areas of the brain that enables people to make sensible, safe decisions.
4. Slower reaction time. Drinking slows reflexes and in-terferes with coordination.

All fifty states have laws against DWI, and many states have recently made their laws tougher. Drunk or impaired drivers face larger fines, longer jail terms and longer loss of drivers licenses. They may have to pay higher insurance premiums too. Many states have now mandatory sentences for anyone convicted of DWI.

Alternatives to drinking and driving. The best and safest advice: DON'T DRINK! Insist on your right not to drink. Ask for juice, soda, or any nonalcoholic drinks. If you choose to drink take these steps to protect yourself and others.

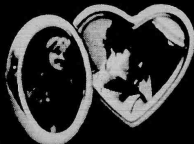
1. Set a limit and stick to it.
2. Choose a driver who agrees not to drink.
3. Drink slowly.
4. Eat before or as you drink. Food in your stomach slows down the absorption of alcohol into your system.
5. Stop in time. Be sure your body has had time to eliminate the alcohol from your system.
6. Be honest with yourself. Alcohol affects all of the skills that are needed to drive safely.
7. Know what you are drinking. Know what and how much is in each drink.
8. If you have been drinking have a sober friend drive you home. Take public transportation. Stay overnight.
9. If a friend has had too much to drink, don't let them drive. Take away the car keys.
10. Protect yourself with safety belts.

Do your part to prevent injuries and death  
BE SMART — DRIVE SOBER

## JOIN OUR

# Holiday Club

FREE CASH PAYMENT  
AND  
FREE VALUABLE GIFT



\$5 Club  
Choose a 2 1/2" x 3" or 3" x 3" frame.



\$10 Club  
Choose a 2 1/2" x 3" double heart frame  
or 3 1/2" x 5" frame.



\$20 & \$25 Clubs  
Choose a 5" x 5" heart-shape frame  
or 5" x 7" frame.



\$50 Club  
Choose one of two 8" x 10" frames.

Choose one beautiful solid brass picture frame for each club opened. Stop into any one of our branch offices and see these beautiful frames on display. Come early for the best selection, and open your Holiday Club at any office of The Trust Company.

But Hurry! Supplies are limited! OPEN YOUR CLUB TODAY.

## CALL TOLL FREE 1-800-223-BANK

# THE TRUST COMPANY

OF NEW JERSEY



*The Billion Dollar Bank with Heart*



Executive Office Journal Square, Jersey City, NJ (201) 420-2500  
Offices throughout Bergen, Essex, Hudson, Middlesex, Morris & Passaic Counties - Member FDIC

### ANNOUNCEMENT

DR. WAYNE JAMES CAPUTO announces the opening of his office for the practice of **PODIATRY-MEDICINE AND SURGERY OF THE FOOT, SPORTS MEDICINE AND DIABETIC PROBLEMS OF THE FOOT** at:



DR. CAPUTO  
Podiatrist

**The Clara Maass  
Professional Center**  
5 Franklin Ave. - Suite 108  
Belleville, N.J. - 751-7752

Dr. Caputo received his professional training at the New York College of Podiatric Medicine. His post graduate training consisted of a two year foot surgical residency at Baptist Medical Center, New York where he served as the chief podiatry resident. He is presently entered into group practice in Roselle Park.

Day, Evening & Saturday Hours Available

### COMPLETE HAIR CARE

from the simple  
to the ultra-chic



- Nail Art With Original Designs
- Pedicures • Electrolysis • Waxing
- Tanning Salon - SCA Wolfe System
- Swedish Massage By Appt.

## Studio One

Hair Design

1095 Broad St. Bloomfield • 338-9777



# Local teenagers return from Mainland China



Far East Travelers — pictured left to right Nutleyville Christopher Slota, and Belleville Mark and Francis Wong. (Photo by Kara Laczynski)

By Kara Laczynski

Christopher Slota of Nutley and Mark Wong of Belleville have an unusual tale to tell about how they spent their summer vacation. With Wong's father Francis, the boys toured mainland China for two weeks in July, followed by two more weeks in Hong Kong. The trip would have been impossible only 14 years ago, when the two former classmates of Holy Family Church were born.

Neither the elder Wong, who emigrated from Hong Kong in 1968, or the boys had ever been to the mainland before. And though they travelled together during the entire tour, their impressions of China split along generational lines.

All three enjoyed the Great Wall more than any other attraction, but for different reasons. "It was cool," Chris said of the 2,000-year-old structure. "The show there was terrific. They had ten people on one bike and one lady up on a unicycle with kites throwing things at her. She caught them with her feet and then tossed them up to her hands."

Wong senior was more impressed with the aesthetics of the Wall.

"It's the only man-made structure you can see from the

moon, and I was fascinated with the question of how a people who lived so long ago could build such an advanced thing thousands of miles long and ten feet thick."

The boys experienced the trip with no preconceptions about what China would be like. But Francis Wong knew about the radical isolationism that characterized China during the Cultural Revolution in the 1960s and was surprised at how western the nation has now become.

"I expected to see everyone in Mao jackets but they all dress like you and me," he said. "There are a lot of small businesses, a lot of street markets and tricycle taxis."

Both Wong and the boys found the people friendly and open but suspicious and contemptuous as Americans often expect residents of Communist nations to be. But the Chinese have cultural quirks just as any nation would.

"They never turn on their headlights at night just their parking lights," Francis Wong said. "I have no idea why. Maybe to save their batteries. I don't know. They only turn them on if they spot something in the road."

Besides exploring China's rich culture, they also sample its renowned cuisine.

"The food here is Americanized Chinese food," Francis Wong said. "The real thing is very different."

Too different for the son's tastes. "We were dying for a hamburger," Mark Wong said. "I didn't even know what some of the stuff in the Chinese food was." They visited a McDonald's franchise in Hong Kong, which despite its decidedly Oriental facade had an American heart, serving standard Big Macs, fries and colas. Chris and Mark each ate three hamburgers, they said.

The three toured through a Chinatown-based travel agency, Sino-American Tours. An American guide accompanied their group on the 18-hour airplane ride to China; they had one four-hour stopover in Tokyo, and a Chinese guide travelled with them through the cities of Canton, Hong Kong, Quilang, Shanghai, Beijing, Peking and Hong Kong. They stayed in hotels reserved for foreigners only and used a type of currency that the natives are not allowed to carry.

They warn you not to trade your tourist money for the local money," Francis said of the guides. "The Chinese want it because they can't buy televisions and other appliances with their money and need the foreign currency, but they have an FBI watching you all the time. If you trade, they will arrest the merchant, not you."

For Francis, the trip was a chance to explore his roots. "Like President Reagan said, you should never forget your heritage," he said. And for Chris and Mark, the trip whetted an appetite for travel that may stay with them for a lifetime. Chris is touring Czechoslovakia next summer and Mark says he would like to go to England.

## BHS kids earn college credit now

# Project acceleration offers college bound high schoolers a money saving head start

By Christopher Bilani

The most academically inclined seniors at Belleville High School have been offered a chance to participate in an ambitious program which pays off in high school and Seton Hall University credits at the same time.

Called Project Acceleration, the program involved four accelerated, challenging courses taught by Belleville High School instructors at the school, but approved by Seton Hall University for college credits as well.

Marilyn McGrath, vice principal at Belleville High School, said, "The program is offered in conjunction with Seton Hall University. It allows our high school seniors to earn college credit while attending regularly scheduled BHS courses."

She said the arrangement is the result of the high school's efforts in contacting the university for participation in the program. She added that the examined the BHS curriculum guides as well as the credentials of the teachers who would be involved and subsequently approved five Belleville High School courses for the program.

The courses are:  
French 4 Enriched, taught by Irene Richner;  
Spanish 4 Enriched, taught by Josephine Mordzienski;  
Italian 4 Enriched, taught by Jules Palmieri;  
English 4 Enriched, taught by John Klotz and;  
Calculus 4 Enriched, taught by Jack Avers.

While the students participating in the program are earning 5-yearly credits from each of these courses, they are also earning 3 college credits per half year for each of the language courses and 4 college credits per half year for the calculus course.

"Students may earn up to 16 credits through the program," McGrath explained.

The savings achieved by the program are one of the key advantages of the program since the \$90 per semester students pay yields either 3 or 4 college credits, worth more than \$300 if taken off campus.

The other savings is time. Belleville High School students who take the full 16 credits open to them will be able to enter college next fall with a full semester of credit under their belts.

Thus, McGrath believes, is an advantage which will help students cope with college life and add to their confidence.

Second Year of Program  
Project Acceleration, now in its second year at Belleville High School, is coming off a debut year which accelerated 20 seniors down

the higher education path. "Last year we had 20 students — all successful with C's or better," McGrath said, adding that, "we anticipate a good turnout for Project Acceleration this year."

Monday, September 29 the high school hosted an open house for parents interested in putting their children through the program.

According to Vice Principal McGrath, a "good turnout" of parents showed up, meeting with a Seton Hall representative who was on hand for questions.

McGrath said the deadline for entering the Project Acceleration program is October 15, and that it is open to all students who are already in the approved, enriched classes.

Payment to Seton Hall, she added, must be made by October 29.

## PRACTICE LIMITED TO ORTHODONTICS



Quality orthodontic care at affordable fees

Ask about our No Down Payment Plan

Interest-free monthly payments as low as \$50.00

All insurance plans welcomed

NUTLEY PROFESSIONAL BUILDING

175 FRANKLIN AVENUE  
NUTLEY, NEW JERSEY  
667-6850

**Paul A. Caputo D.P.M.**  
General and Surgical Care of the Foot  
is pleased to announce  
Day - Evening - and Saturday Hours  
345 Washington Avenue  
Belleville, N.J. 07109 • 759-6560

**THE NEW ANGELO'S RESTAURANT & PIZZERIA**  
303 Broad St. Bloomfield • 429-8505

Open For Lunch  
from 11 A.M.

Our new banquet room is open for all occasions up to 80 people  
• Deliveries in trucks w/ heated ovens  
• Catering accommodations on & off premises

**BUY 1 DINNER  
AT REG. PRICE  
GET 2.00 OFF  
THE SECOND DINNER  
OF EQUAL PRICE**

Use thru Thurs only  
With this coupon. Expires 10/15/86

**\$1.00 OFF  
ANY  
LARGE PIZZA**

Take out order only  
Offer good any day. 1 coupon per visit  
With this coupon. Expires 10/15/86

**PLASTIC SLIPCOVERS**  
CUSTOM MADE

**SPECIAL OFFER**  
1 SOFA OR 2 CHAIRS  
\$4995  
FREE DELIVERY  
Plastic Cover Prices Start At

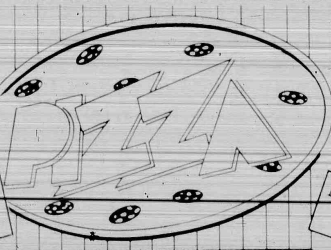
**NOW ALSO AVAILABLE**  
on better quality leather, cloth covers  
and vinyl. Also available in  
any color. Free delivery.  
Call for more info.

Represented by: GARY KELLEY  
TEL: 352-0555. TEL: 352-0599

**GARDEN STATE PLASTIC  
COVERS CO., INC.**

CALL 352-0555. SAVE 352-0599

**NOW OPEN FOR BUSINESS**



**MONDAY NIGHT  
FOOTBALL  
SPECIAL  
\$3.95**

**MUSSELS  
\$2.75**

**PIZZA**

**MAURO'S**  
Pizzeria & Restaurant  
558 Franklin Ave. Belleville  
Phone 751-6016  
Open: Mon-Sat - 11 a.m.-11 p.m.

**COLUMBUS DAY SALE**

Carmine Milici's

**Plaza men's store**

**25% OFF All Outerwear**

OCT. 9 - OCT. 18

Imported English Cashmere  
& Wool Blend Topcoats  
Reg. \$275 NOW **\$206**

Single and double breasted style available

Double Breasted All Wool Melton Velour  
Outerwear  
Reg. \$185 NOW **\$139**

Zipout Lined Raincoats  
Reg. \$175 NOW **\$129**

**FREE SHIRT**

With Every Suit & Sportcoat  
Purchased  
During Sale Days

**Plaza men's store**

363 Franklin Ave. Belleville 759-0019  
(Channel Plaza at Joralemon St.)  
Mon & Fri 9:30-9, Tues-Sat 9:30-6 P.M.

All major credit cards accepted





At the rally — Governor Thomas Kean, third from left, made a rare trip to Essex when he appeared at a rally in neighboring Bloomfield. Also pictured is Essex County Executive candidate Nicholas Amato, Congressional candidate for most of Belleville, Thomas Zampino, and Essex County Surrogate candidate, Earl Harris.

## Amato claims county executive asks jail workers to contribute

Nicholas R. Amato, Republican candidate for Essex County Executive in the November 4 general election, today renewed his call on his opponent, incumbent Peter Shapiro, to co-sign a pledge agreeing not to solicit or accept campaign contributions from the county workforce.

"In renewing my call on Peter Shapiro to co-sign this pledge of 'non-solicitation' of county employees because it is fundamental to the right procedure in this highly charged political environment and when the confidence of government and those responsible for administering county government are in question," Amato stated.

"I have never solicited campaign contributions from county employees, although Peter Shapiro implies otherwise, and I challenge Peter Shapiro to say the same," Amato said.

"The facts are that Peter Shapiro has made it a practice to solicit contributions from both the county workforce on all levels and from vendors doing business with the County of Essex," Amato charged.

According to Amato, a review of Peter Shapiro's financial reports to the Election Law Enforcement Commission reveals a "virtual

who's who" list of division heads, department managers, county employees and outside firms doing business with Essex County.

"Peter Shapiro, as a so-called reformer, disclaimed any intention to solicit the county workforce and now we see a whole new policy from his administration," Amato said, adding, "what I believe is important is that people have confidence in the governmental process and that there is no implication that government is for sale."

"In proposing a public signing

of a pledge of non-solicitation together in the Hall of Records, or perhaps just prior to our first debate," Amato said.

"Peter Shapiro can say what he wants but when it gets to the point when temporary employees at the jail in Newark have his campaign solicitation forms stapled to their pay checks then there is something radically wrong in county government," Amato said.

"If Peter Shapiro wants to hold up to his reform credentials then why doesn't he just sign the pledge with me," said Amato.

## Township savings bank offers car buying plan

The recent spate of low, low rates on new car loans has resulted in increased activity in the new car market, with General Motors offering a rate of 2.9 percent.

Robert H. Blum, consumer lending officer of First DeWitt Savings and Loan in Belleville, states that in many cases his association can fit even better when a car buyer takes advantage of dealer rebates.

First DeWitt currently offers a rate of 8.75 percent on new cars and Blum states that that rate has many advantages over dealer rates.

For instance, the prospective buyer should find the exact car that he or she wants, then combine the dealer rebate with First DeWitt's 8.75 percent auto loan, then lower the monthly payments by extending financing up to 36 months. Furthermore, he says that First DeWitt's rate is good on foreign cars as well as domestic.

The buyer can shop for the car leisurely and at a considerable longer period of time then offered by the dealers. And once it is purchased, monthly payments are lower through the extension of the loan, Blum said.

Blum urges prospective car buyers to investigate First DeWitt's offer before they rush to invest in a car that does not have all the options that they need, the sporty features, the exact model, or even the year. First DeWitt offers faster, friendlier service in addition to the money saving advantages, Blum adds.

First DeWitt has offices in Belleville, Bloomfield, Cedar Grove, Par-Troy, Hopatcong and Bricktown.

## Hall of Fame dinner Nov. 21

The Belleville Hall of Fame Dinner will be held on Friday, November 21, at the Chandelier Restaurant, 340 Franklin Ave., Belleville at 7 p.m.

# Shapiro urges state takeover of Essex County jail system

Essex County Executive Peter Shapiro has urged state legislators to approve a bill that would require the state to assume the cost of county jails. Essex County would save \$33 million as a result of the legislation, he said.

The bill was introduced in the Assembly Oct. 2 by Minority Leader Alan Karcher (D-Middlesex). It would require the state to assume costs of county jails and penitentiaries as of Jan. 1, 1988.

Essex spends some \$33 million each year to house prisoners at the county jail in Newark and the jail annex in North Caldwell, said Shapiro.

The cost is paid for through

local property taxes. If the state assumed the cost of running those prisons, Essex taxpayers would see a considerable reduction in local taxes.

The county executive said Essex, an urban county with a huge criminal caseload, pays far more for the support of courts and jails than suburban and rural counties. Recently, the Essex County Jail in Newark has routinely held 700 or more inmates while the Essex County Jail Annex in North Caldwell regularly holds more than 880.

Karcher's legislation would require the state Department of Corrections to commission a \$10,000 study to review his proposal.

Shapiro said he also favors state assumption of welfare and court costs. He urged Essex residents to approve a public question on that subject on the ballot in November. Essex currently pays \$40.2 million for the support of the court system and \$21.5 for the support of the welfare system.

"The costs of welfare, the courts and the jails are the main reasons' property taxes have always been so high in urban counties," especially Essex, said Shapiro.

If these costs were assumed by the state, taxpayers in Essex and other urban counties would see meaningful property tax relief.



Kiwanis Lieutenant Governor Gary Biondi introduces new Kiwanis President Michael Megaro.



Past Kiwanis President John Iannuzzi presents Sy Grossman with Past President plaque.



Bob Cassin receives Kiwanian of the Year plaque from Grossman.

## Kiwanis install new officers

Michael Megaro of Belleville was installed as President of the Kiwanis Club of Belleville by Lt. Gov. Gary Biondi. Megaro was installed during the club's meeting on Sept. 22 at the Salt Carlo Restaurant. Also installed were Vice Presidents Robert Lawson and John Cassin, Treasurer Jimmy Russo and Secretary Frank L. Pitt.

The Immediate Past President is Secretary Grossman.

Megaro will be serving as club president on the Kiwanis team with newly elected Kiwanis International President, Frank J. D'Noto of Orange, Calif. The 1986-87 Major Emphasis Program focuses on the organization's resources on community service activities that promote the health and safety of communities with the theme, "Make Miracles Happen."

Local club projects include programs such as food baskets, cancer drive, scholarships, needs case assistance, youth group assistance.

Kiwanis has clubs located in over 46 countries and geographic areas with 115,000 members. Last year, Kiwanis clubs donated \$51.2 million and volunteered more than 22 million hours for community service projects.

## BE HEALTHY - STAY HEALTHY

A Chiropractic examination will show you the way!

Dr. Susan M. Guarino, Chiropractor

has been serving the Belleville, Nutley, Bloomfield area for years and is available for consultation in discussing the benefits of chiropractic.

PLEASE CALL:

**Bloomfield Chiropractic Center**

858 Joralemon St.  
Belleville, N.J. 07109  
759-3600

"Your Health Is Our Concern"

GOVERNOR THOMAS H. KEAN, Elected September 21, 1986, 1986-1990 HEALTH WEEK

## Free Glaucoma Screening

Glaucoma is the leading, preventable cause of blindness in the U.S. Glaucoma can affect you gradually and painlessly you might be unaware you have it. It is particularly important for persons over the age of 40 to have their eyes checked and pressure measured every two years, although glaucoma can occur at any age.

The EYE INSTITUTE OF ESSEX, as part of its total eye care program will offer to the community a free glaucoma test and preliminary vision check

SEPTEMBER 22 through OCTOBER 22

Call for an appointment and ask for special screening exam.



**EYE INSTITUTE OF ESSEX**

Philip N. Eichler, M.D., F.A.C.S. Martin L. Fox, M.D., F.A.C.S.  
H.M. Gambacorta, M.D., F.A.C.S. Nathaniel E. Ross, O.D.

Two convenient locations:

Clara Maass Professional Center, 5 Franklin Ave., Belleville, NJ 07109 ☎ 201-751-6060  
519 Bloomfield Ave., Caldwell, NJ 07006 ☎ 201-226-1226

Co-Sponsored by BELLEVILLE LIONS CLUB, Dennis Mautone, Esq., President

## BELLEVILLE PHYSICAL THERAPY ASSOC.

is pleased to announce the opening of its practice

We are the specialists in the treatment of headaches, neck pain, back pain, sports and other muscular injuries.

Call for an appointment:  
751-3584

14 Franklin Street, Belleville, N.J. 07109

## WHITE EAGLE MANOR

OF BLOOMFIELD Presents

**LENNY GONULKA AND**

**CHICAGO PUSH**

Award Winning Polish Orchestra

SUNDAY, OCTOBER 12, 1986

5:00 - 9:00 P.M. — Admission \$7.50

CALL FOR RESERVATIONS

**748-6590**



## Celebration planned

# Christ Episcopal turns 240 Oct. 26

## Religious Viewpoints

Christ Episcopal Church, 393 Washington Avenue, Belleville, will celebrate its 240th anniversary on Sunday, Oct. 26 with a festival service beginning at 10 a.m.

Christ Church has had a long and varied history of which they

are justly proud. They began in the loft of a barn and then built a church on Main Street. The church cemetery is still located on the original site. The first church was burned down and a second church was built there. In the 1800's the church operated under

the flag of the Confederate States of America for one month. More recently, the church served as temporary home for students of School 3 when that building burned.

The Church is inviting everyone to come and celebrate with them.

They are also planning to use alumni acolytes for the service and ask that anyone who used to serve on the altar and is interested in participating that day contact 751-8820. A reception will be held, following the service, in the undercroft of the church.

## PRAYER

## LORD

HELP ME  
TO REMEMBER  
THAT NOTHING  
IS GOING TO HAPPEN  
TO ME  
TODAY THAT YOU  
AND I  
TOGETHER  
CAN'T HANDLE

## Vigorous still at 85

Among older persons whom we encounter in the Bible, Caleb is one of the most interesting and inspiring.

His physical vitality amazes us. At 85 he was able to say, "I am still as strong today as the day 45 years earlier." Moses sent me out to survey the land of Canaan. I'm just as vigorous to go out to battle now as I was then." (Joshua 14:11, NIV).

His spirit at age 85 is amazing. Coming to Joshua to claim the inheritance promised him by Moses, Caleb acknowledged that the full country of Hebron was occupied by the Anakites, strong people in heavily fortified cities. Yet Caleb

did not ask for some less difficult area. And with this enthusiastic man at their head, his warriors did occupy Hebron.

If we are to be positive and powerful persons at age 85, we must avoid some potentially debilitating attitudes which Caleb obviously did not allow to hinder him.

He refused to be defeated by frustrations. At age 40 Caleb had been sent as a spy into the land of Canaan, and he along with Joshua came back with an entirely encouraging report.

But the people of Israel listened to the negative reports of the 10 other spies. They cowered in fear



Pastor Gerald Fortunato

and refused to attempt to move in to Canaan.

I have met people who, after years, have still not recovered from some setback they experienced or some disappointment they suffered. I know a former pastor whose enthusiasm for the ministry was destroyed and whose usefulness to the Lord was impaired because a church he pastored as a young man refused to agree to a relocation and building program he tried to initiate.

Sometimes frustrations bring on bitterness. This is especially possible when, as with Caleb, our inability to move ahead and to fulfill our ambitions is due to the failures and opposition of others. The attitudes of some have become permanently soured by injustices done to them by other people or by failures brought on by the pettiness of friends.

As a young pastor I became acquainted with an older minister who always seemed bright, happy and enthusiastic. He said to me one day, "Never become envious of the honors or achievements of any other person. You will see people get ahead who don't deserve it. You may fail to receive the recognition you deserve. Don't leave all that with Him. I have greatly pointed from that advice."

Vigorous still at 85? May God enable all those in our churches who reach Caleb's physical age to have his spirit and fire.

## Belleville Assembly of God hosting community revival

On Thursday, Friday and Saturday, October 9, 10 and 11, an undenominational community wide revival will be held at the Belleville Assembly of God, 174 Holmes St. The guest speaker for the three night revival will be the Rev. Frederick A. Trunk from Kennewick, Virginia, formerly of New Jersey and president of the Metropolitan Organ Club.

Rev. Trunk has served for thirty-three years on church staff in various positions, including minister of music, minister to youth, and associate pastor. In addition to being the guest speaker for the revival, Rev. Trunk will also present musical selections on the organ. Richard H. Deane, from Hanson, Massachusetts, will be the guest soloist for the three

evenings. He and Roy Trunk have worked together for several years in music and evangelism. Two choirs will be featured: the Belleville Assembly of God Choir and the Faith Gospel Church Choir of Clifton.

Come and bring your Bible for a time of refreshing study and good gospel singing. Everyone of every denomination is cordially invited. The meetings start nightly at 7:45 p.m. For further information, telephone 759-2327 or 967-6483.

**NUTLEY FOOT CARE CENTER**  
**Dr. Robert Lardiere**  
Surgeon, Podiatrist

"Complete Foot Care For The Entire Family"

230 Centre St.  
Nutley  
667-5070

**NURA'S**  
**Columbus Day SALE**

STARTS:  
Thursday, October 9th

Hurry In! Some Quantities Limited.  
Women's wool & wool blend sweaters, pullovers, famous maker blouses vests sportswear separates woven or flannel shirts leather & suede jackets, women's office pants, skirts, tops, dresses suits, mufflers scarfs, gloves handbags shoes, gorgeous silver gold & costume jewelry, accessories, etc.

540 Valley Road  
1 block N of A & P  
Upper Montclair, N.J.  
744-3427

Open 10-6  
Closed Sunday  
Ample Parking  
Major Credit Cards Accepted  
Personal Checks Accepted

**COLUMBUS DAY SALE**

At  
**The New**  
**LYN-MAID FACTORY STORE**

545 Valley Brook Ave.  
Lyndhurst, N.J. 438-3151

**Drastic Reductions!!**

**Oct. 9th thru Oct. 18th**

**We Must Make Room For New Stock!**

**We Are The Place For:**

- The "Full Figured" Woman
- Lingerie
- Sweaters
- Handbags
- Bras
- Panty Hose

**Meyer Berkshire Pantyhose - At Discount Prices**

**Hours: Daily 10-6 • Thursday 10-9 • Saturday 10-5**

*You're invited*  
to the  
**Hoffmann-LaRoche**  
**Casual Secretarial Program**  
**OPEN HOUSE**

Friday, October 10  
9AM-3PM

The hours, extra money and professional setting can be yours.

But the real benefits are ours.

When you rejoin the working world with Hoffmann-LaRoche's casual secretarial program, you get a lot in return:

- Flexible hours that match your schedule
- temporary assignments
- competitive salary
- the chance to work in a professional atmosphere
- expert training on today's automated business equipment

But if you weigh the advantages, we get a lot more. We get responsible, dependable individuals eager to contribute to the success of our company, without having to significantly adjust their personal lives. We get people willing to chip in and add a little life and verve to our community of dedicated employees.

If you are organized and thrive in a busy environment and would like to contribute to the efforts of our major pharmaceutical company, come to our Open House, conveniently scheduled just for you. Get back into the work force with your schedule and our training. Come share the advantages. At Roche, we want to work with you.

**Directions:** Just take Rt. 310 Passaic Avenue. Exit on Passaic Avenue, go south to Kingsland Street. Make a right turn onto Kingsland Street and look for signs directing you to parking.

**ROCHE**  
**HOFFMANN-LA ROCHE INC.**  
Nutley, N.J. 07110

products that matter from people who care

An equal opportunity employer

# Events in the Area

## Oldsmobile Club car show Oct. 19

The Oldsmobile Club of America will host its "Final Fall Fling" car show Oct. 19 at Owens Park, Park Ave. Nutley. Flashy cars and 50's music. Spectator admission at \$1 will benefit the Nutley Public Library. Car registration is \$10 at the gate by noon at the latest. For information, call Steve Karasitis at 368-7815 after 6 p.m.

## Harvest Festival at Vincent Church

Vincent United Methodist Church, 100 Vincent Place, Nutley, will host its bi-annual Harvest Festival 4 to 9 p.m. Oct. 24. Baked goods sale, full course roast beef dinner at two seatings, 5:30 and 7 p.m. For tickets at \$7.75 for adults, \$4.25 for children under 12, call the church office at 677-5440.

## Organizations for area singles

The ABC (Alone by Choice or Chance) 30 Plus group of the Passaic-Clifton YM-YWHA meets Tuesday evenings at the Y, 199 Scoles Ave., Clifton. For more information, call Janet Packer at 779-2980.

New Jersey Moonrakers, a club catering exclusively to tall and single adults, meets 8:30 p.m. every second Tuesday of the month at the Meadowlands Hilton, 2 Harmon Plaza, Secaucus. All ages. \$3 for guests, free for members. 298-0964.

The Singles Connection, widowed, divorced, separated, first and third Thursdays, 8 to 11 p.m., Grace Episcopal Church, 200 Highfield Lane, Nutley. Rap groups, music, dancing. \$3. 235-1177.

Jewish Singles Friday night dance, 20's and 30's, 7:30-8:30 p.m.

A New Beginning pub mixer at Allan's Place, 522 Franklin Ave., Nutley, second and fourth Wednesdays after 9 p.m. Lite music, drinks, conversation. 661-3357 or 667-9898.

Singles dance, 7:30 p.m. to 12:30 a.m. Wednesdays, Springfield Manor, 2800 Springfield Ave., Union. Social, ballroom dancing. Orchestra, DJ, big band sound.

Success Oriented Singles (SOS) meets 8:15 p.m. the first and third Fridays of the month. For more information, call 761-1419 or 226-5999.

Sacred Heart Singles will meet 8 p.m. Oct. 10 in Nardelli Hall, 12 State St., Bloomfield. Halloween costume party. \$1 and either a Halloween decoration or novelty or treat. Entertainment by Julia Florio, organist and pianist, and John DeSinger. Awards and refreshments.

The Gregory Club of N.J. wine and cheese get acquainted party for 30-plus singles 9 p.m. Oct. 10 at the Nutley Red Cross building, 169 Chestnut St. New and prospective members invited. For information, call Fred at 942-7831 or Bot at 674-1217.

The O.N.E.S. will meet for lunch 12:30 p.m. Oct. 19 at Bethany Presbyterian Church, corner High Street and West Passaic Ave., Bloomfield. Donation: \$4 or food item of equal value. For mature single, widowed and divorced persons of all religions. For more information, call 667-2646, 777-2153 or 667-5956.

## Upcoming class reunions listed

Nutley High School Class of 1951, will hold a reunion Nov. 29 at the Ramada Inn, Clifton. Seeking class members. Peter Marshall, 933-4815.

Belleville High School Class of 1976, November, 1986. Anthony Nicotia, 751-6474. Debbie Current, 751-8584. Kathy Gino, 429-7347. Diane DeMayo, 736-2426.

Nutley High School Class of 1966, Alan DeFabbio, 661-2110 or Russell Catanzarite, 661-2093.

Belleville High School, Class of 1966 Nov. 29, the Aspen, Parsippany P.O. Box 666, Belleville.

Nutley High School Class of 1956 this November. Rose LaVolotta Helm, 338-8614.

Nutley High School Class of 1941 Nov. 15, Friar Tuck, Cedar Grove, Lloyd Newsome, 65 Hawthorne Place, Montclair, 07042, 783-9162.

Barringer High School, Newark, Classes 1940 through 1945, mid-November. 226-5470 or 236-7385.

West Side High School, Newark, Classes of January and June 1936 seek members for reunion. Names, addresses and telephone numbers to Guidance Dept., West Side High School, 403 South Orange Ave., Newark, 07103.

Belleville High School Class of 1937, looking for classmates for a 50th reunion. Call class president Frank "June" Caragher, 759-5820. Bus Gausepohl, 748-5297. Bob Shaughnessy, 759-2506 or Audrey Ural, 226-1872.

Nutley High School Class of 1976, plans a reunion 7:30 p.m. Nov. 28 at the Landmark Inn, E. Rutherford. For information, call Joanne Cocchiola Ciancinimo at 235-0697 or Kim McDonald Carissimo at 667-2004.

Nutley High School classes of January and June 1937 seek members for a 50-year reunion. Contact Julia Giudice-Fritchman, 625 Centre St., Nutley, 661-0677 or Maris Koch MacKay, 181 River Road, Apt. 5G, Nutley, 667-3871.

Barringer High School classes of 1940 through 1945 are planning a reunion Nov. 1 at the Birchwood Manor, Whippany. Contact Rose Viviane Del Presto, 105 Avon Drive, Essex Fells, 07021 or call 226-5470 or 239-7385.

Belleville High School class of 1956 seeking alumni for 30th reunion dinner dance 7:30 p.m. Nov. 8 at the Bethwood, Totowa. Contact Kathy Veneziano Dal Bon at 224 Park Ave., North Caldwell, 07066.

A reunion for graduates of Hunter College, the Bronx, 1961 to 1967, will be held Jan. 30, 1987 at Loews Glenpointe Hotel, Teaneck. \$65 per couple. Call Curt Schleier (class of '65) at 391-7135.

## Family Counsel dinner dance

The Family Counsel Inc. of the Essex County Geriatrics Center will hold its sixth annual dinner dance 7:30 p.m. Oct. 24 at the Branch Brook Manor, Belleville. Proceeds benefit the 332 patients at the center. Stuffed capon dinner, cash bar. For tickets at \$30, call Erma Mastro at 667-4430 or Irma Krydla at 751-1270.

## Flea market at Sacred Heart

An indoor bash/outdoor flea market will be held 9:30 a.m. to 4:30 p.m. Nov. 8 at Sacred Heart Parish Hall, Park Ave. and Ridge St., Newark. Table rental at \$12. Free parking, no admission. To benefit Sacred Heart Cathedral. For information, call 484-4600.

## Roche Retirees meet Oct. 11

Roche Retirees will meet 1:30 p.m. Oct. 11 in building 76 auditorium. A video program, "How to Live Longer," narrated by Dr. Frank Field of CBS-TV will be shown.

## Cosmopolitan Club schedule

The Cosmopolitan Association, a group for foreign born women and their daughters, meets 7:30 p.m. every second Thursday at Bloomfield Civic Center, 84 Broad St. Meetings resume in September. Associates and friends welcome as guests.

## VFW Chinese auction Oct. 19

The ladies auxiliary to Stuart E. Edgar Post 493, Veterans of Foreign Wars, will hold a Chinese auction Oct. 19 at the post home, 271 Franklin Ave., Nutley. Proceeds to the group's cancer fund.

## Scarpelli Assoc. picnic Oct. 19

The Peter C. Scarpelli Civic Association will hold its second annual picnic beginning at 1 p.m. Oct. 19 at Kingsland Park, \$10 per adult adn \$3 per child includes hot dogs, hamburgers, sausage and peppers, corn, watermelon, beer, soda, games and awards. For tickets, call Peter Scarpelli Sr. at 667-1215 or write the Scarpelli Civic Association, 633 Franklin Ave., Suite 137, Nutley, 07110.

## Dessert, card party Oct. 16

The Lions Auxiliary of the Nutley Lions Club will hold its annual dessert and card party Oct. 16 at the Nutley Elks Club, Chestnut St. Proceeds will benefit the eyegight program. For tickets or information, call Gloria at 667-7089.

## Kid Kats Cafe Talent Show

The Nutley Parks and Recreation Dept. and the Nutley Junior Woman's Club are sponsoring a "Kid Kats Cafe Talent Show" 7:30 p.m. Nov. 14 at Franklin Middle School. Children 3 to 15 may enter in categories of tap, jazz, ballet, lyrical, contemporary and acro-gymnastics. Students can enter more than one category and will be judged against their own age group. For more information, call Marcia Wasvary at 667-2241 or Marie Vichiarello at 667-3731.

## Rose Casale Memorial Dinner

The annual Rose Casale Memorial Dinner will be held 5 p.m. Oct. 26 at Miles A. Suarez Post 711 V.F.W., 369 Broughton Ave., Bloomfield. Roast beef, turkey, elegant desserts. Proceeds to cancer aid and research. For tickets at \$9.50 for adults, \$5 for children, call Marion Hart at 338-8513 or Barbara Ellmer at 338-4256.

## Harvest Masquerade Ball Nov. 8

The Nutley Junior Woman's Club will sponsor a Harvest Masquerade Ball dinner dance 7:30 p.m. to midnight Nov. 8 at the Elks Club, Entertainment. For tickets at \$22.50, call Pat Backman at 235-1485 or Mary Ellen Matarazzo at 667-6167.

## Grey-Rose dinner dance Oct. 11

The Grey-Rose Social Club will hold its seventh dinner dance 7:30 p.m. Oct. 11 at the Nutley Elks Club, 242 Chestnut St. Tickets at \$20 may be obtained from Nicholas Duca Jr. at 667-5735 or Vincent Parigi at 235-9180. Open to former or current residents of Greylock and Roosevelt avenues, Belleville.

## Octoberfest dinner dance Oct. 18

V.F.W. Post 275-17, Belleville Ave., Belleville, will celebrate an Octoberfest dinner and dance 8 p.m. Oct. 18. Tickets: \$15 per person. Free beer and soda, live music. For reservations, call 667-7486.

## Chinese auction Oct. 19 at VFW

The Ladies Auxiliary to Stuart E. Edgar Post 493, V.F.W., will hold its annual Chinese auction 2 p.m. Oct. 19 at the post home, 271 Washington Ave., Nutley. \$3 everyone invited. Proceeds to auxiliary cancer fund.

## Guild serving spaghetti Oct. 18

The Belleville Reformed Church Women's Guild for Christian Service is sponsoring a spaghetti dinner 6:30 p.m. Oct. 18 in the church's fellowship hall, corner of Main and Rutgers streets. Spaghetti, sausage, meatballs, Italian bread, salad bar. Reservations must be made by Oct. 11. Seating limited to 100 people. Call 751-2262 or 759-4039 for tickets at \$5 for adults, \$3 for children 10 and under.

## Craft Show at Mt. Carmel Oct. 18

Our Lady of Mount Carmel Church, 120 Prospect St., Nutley, will hold its annual craft show 10 a.m. to 4 p.m. Oct. 18. Admission: \$7.50 for adults, \$2.50 for children. Soup and sandwiches available 11 a.m. to 3 p.m.

## Michael Lenson art on exhibit

Michael Lenson painting retrospective 1938 to 1970 will be exhibited in the Ben Shahn Galleries, William Paterson College, Pompton Road, Wayne through Oct. 31. Mon and Wed, 9 a.m. to 8 p.m.; Tues, Thurs. and Fri., 9 a.m. to 5 p.m.

## 50's/60's dance at St. Val's

St. Valentine's PTA will hold a 50's/60's dance to benefit the school 8 p.m. to 1 a.m. Oct. 25 in the church hall, 236 Hoover Ave., Bloomfield. Tickets at \$15 include hot and cold buffet, D.J., contests and set-ups. Tickets available after Mass Oct. 18 and 19 or by calling Linda at 693-1423 or Becky at 748-0758. No tickets at the door.

## Craft party Nov. 7 at Nutley Elks

The ladies auxiliary of the Nutley Elks Lodge 1290 will hold its annual scholarship card party 8 p.m. Nov. 7 at the lodge, 242 Chestnut St. For tickets at \$4, call Terry Orsio at 964-1062 or Lillian Sisto at 667-4183.

## Alzheimer's support group

The Clifton Alzheimer's Disease Family Support Group will meet 7:30 p.m. Oct. 13 in the offices of the Clifton Family Practice, 716 Broad St. All caregivers welcome. For more information, call 472-7414 or 478-0564.

## Craft show/flea market Nov. 8

St. Valentine's School PTA will hold its fifth annual indoor craft show/flea market 10 a.m. to 5 p.m. Nov. 8 at St. Valentine's Church Hall, 236 Hoover Ave., Bloomfield. For tables at \$15, call 743-1490 or 338-9076.

## October Sundays at Oakeside

Oct. 12, 1 to 4 p.m., outdoor slavic festival. Folk dancing, singing and music of Russia and other slavic countries. Free.

Oct. 19, festival raffle.

Oct. 26, 2 p.m., storyteller. Haunted Inns of Great Britain. Chilling true tales. Limited seating. Free. All events at Oakeside Bloomfield Cultural Center, 240 Belleville Ave.

## Knights serving fish and chips

Bloomfield Knights of Columbus will serve fish and chips 6 to 8 p.m. Oct. 31 at 190 State St. Donation: \$8. For information or tickets, call Rose Ruffalo at 743-8688 or Lou Clarla at 748-5785.

## 50's revival dance at St. Thomas

St. Thomas the Apostle Home & School Association will sponsor a 50's revival dance 8 p.m. to 1 a.m. Oct. 18 in Herron Hall, 50 Byrd Ave., Bloomfield. Tickets are \$12.50 in advance. Call Lorna Scardigno at 338-1681 or Ginny Maubbeck at 338-9817 for tickets and reserved tables.

## Food drive to aid hungry

Nutley Junior Woman's Club is sponsoring a food drive in celebration of World Food Day, Oct. 16. Bring canned or boxed food items to the Nutley Public Library now through Oct. 16. Donations will go to a volunteer soup kitchen in United Methodist Church, Newark.

## Flea market, antiques, crafts

The Nutley Historical Society will hold its 8th annual flea market, antiques and crafts sale 10 a.m. to 1 p.m. Oct. 18 at the Nutley Museum, 65 Church St. Homebased goods, farm-fresh vegetables, food and refreshments also available. For space reservations, call Ruth at 667-9193 or Audrey at 667-2650 before Oct. 15.

## Columbus weekend flea market

The 4th annual Columbus Day weekend flea market and craft show will be open 10 a.m. to 5 p.m. Oct. 12 and 13 on the grounds of the Geriatric Center, corner of Belleville and Franklin avenues, Belleville. Over 100 dealers.

## Masquerade ball dinner dance

Nutley Junior Woman's Club will sponsor a harvest masquerade ball dinner dance 7:30 p.m. to midnight Nov. 8 at the Elks Club, Chestnut St. Full dinner. Beer and soda available through the evening. Magic show awards for best costume. The Pros disk jockey. For tickets at \$2.50 per person, call Pat Backman at 235-1485 or Mary Ellen Matarazzo at 667-6167.

## Separated and Divorced Catholics

Ministry to Separated and Divorced Catholics will present attorney Mary Jean Gallagher in a discussion on the intricacies of divorce 8 p.m. Oct. 9 at St. Thomas the Apostle Church, 60 Byrd Ave., Bloomfield. For more information, call Lucille Palis Finamore at 744-8892 after 7 p.m.

## Country Fair at Montgomery

Montgomery Presbyterian Church, Mill Street and Montgomery Place, Belleville, will hold a country fair 10 a.m. to 4 p.m. Oct. 18. Craft items. Good as New baked goods, snack bar, children's wishing well.

## Post hosting Italian Night feast

Miles A. Suarez VFW Post 711, Bloomfield is serving an Italian Night feast Oct. 11 at the post home, 369 Broughton Ave. All food prepared by chefs of the post. For ticket information, call Peter Paone at 483-8081, Carl Capasso at 743-4880 or John Mooney at 338-8053.

## Christmas boutique Nov. 8

Orange Life Members Retirees of the Telephone Pioneers will sponsor a boutique 10 a.m. to 4 p.m. Nov. 8 at Park United Methodist Church, 120 Broad St., Bloomfield. Proceeds to needy families. Afghans, baby outfits, Christmas chime critters, satin glass candles, tree ornaments, pastries, etc.

## Oktoberfest smorgasbord Oct. 18

St. Paul's (Congregational) Church, Franklin Ave. at St. Paul's Place—Nutley, will hold its third annual smorgasbord, an Oktoberfest, Oct. 18. Seating at 5 and 7:30 p.m. Many traditional German dishes. For tickets at \$7.50 for adults, \$3.75 for children under 12, call 667-1321.

## Legion flea market Oct. 12

American Legion Post 105, 621 Washington Ave., Belleville, (near McDonald's and Pathmark) will sponsor a flea market 9 a.m. to 5 p.m. Oct. 12. Call Barbara at 991-3671 or 759-9650.

## Sidewalk sale set in Belleville

The Belleville Chamber of Commerce will sponsor a sidewalk sale on Washington Avenue 9:30 a.m. to 6 p.m. Oct. 9-9:30 a.m. to 9 p.m. Oct. 10-9:30 a.m. to 6 p.m. Oct. 11.

## School 3 flea market Oct. 19

The Home and School Association of School 3, 230 Joralemon St., Belleville, will hold its annual flea market 10 a.m. to 5 p.m. Oct. 19. Set up time: 9 a.m. Tables at \$15 may be reserved by calling Pat at 759-6624 or Betty at 759-1114.

## 'Night at the Races' Oct. 29

"Friends of Tom Zampino," candidate for Congress in the Eighth District, will sponsor a "Night at the Races" 6 p.m. Oct. 29 at the Pegasus. Unlimited prime rib dinner. Tickets at \$40 by calling 759-5656. Make checks payable to Friends of Tom Zampino.

## Knights honoring Miller Oct. 25

St. Mary's Council 2346 Knights of Columbus will honor immediate past grand knight George W. Miller with a dinner dance Oct. 25 at council headquarters, 150 Chestnut St. For reservations, call Robert Davies at 667-2661 or Joseph Quigley at 667-8741.

## Old Guard of Belleville meets

The Old Guard of Belleville meets the 2nd and 4th Tuesdays of each month at Fawcett Church hall, Union Ave., Belleville.



## Stork Club

### Maria T. Sibello

A first child, a daughter, Maria Teresa, was born to Mr. and Mrs. Gerald Sibello of Belleville Aug. 31 at Mountainside Hospital, Montclair. Birth weight was 6 pounds, 7 ounces.

Mrs. Sibello is the former Virginia LaRocca, daughter of Marie LaRocca of Cuckerton. Mr. Sibello is the son of Mr. and Mrs. Gerald Sibello Sr. of Newark. The baby was named after her paternal grandmother.

### Michael G. Casale

A first child, a son, Michael Gerard, was born to Mr. and Mrs. Vincent Casale of Toms River Sept. 6 at Community Hospital, Toms River. Birth weight was 9 pounds, 10½ ounces.

Mrs. Casale is the former Carol Palumbo, daughter of Mr. and Mrs. Gerard Palumbo of Nutley. Mr. Casale, son of Mr. and Mrs. Michael Casale of Belleville, is a teacher at Southern Regional High School, Manahawkin.

### Michael A. Palermo III

A first child, a son, Michael Anthony, was born to Mr. and Mrs. Michael A. Palermo Jr. of Bloomfield, Sept. 26 at Clara Maass Medical Center, Belleville. Birth weight was 8 pounds, 2 ounces.

Mrs. Palermo is the former Marlene Falzaroni, daughter of Mr. and Mrs. Pasqual Falzaroni of Hackettstown. Mr. Palermo, son of Mr. and Mrs. Michael Palermo of Belleville, is a correction officer at Essex County Jail, Newark.

### Alexandra M. Bradley

A first child, a daughter, Alexandra Megan, was born to Mr. and Mrs. Raymond P. Bradley of Belleville, Sept. 26 at Clara Maass Medical Center, Belleville. Birth weight was 7 pounds, 7 ounces.

Mrs. Bradley is the former Tracey M. McCabe, daughter of Tanya G. McCabe and John M. McCabe, both of Belleville. Mr. Bradley, son of Mr. and Mrs. William Bradley of Lyndhurst, is an assistant programmer analyst with Prudential Insurance.



Rosemarie Torella — Richard Polec



Karen Pettineo — Robert Hartman

## Torella-Polec betrothal Karen Pettineo to wed Robert Hartman Jr.

Mr. and Mrs. Harry Torella of Cedar Grove announce the engagement of their daughter, Rosemarie, to Richard Polec, son of Mr. and Mrs. Thomas Watts of Belleville.

Miss Torella, an alumna of Memorial High School, Cedar Grove, is with Fortunoffs, Wayne.

Mr. Polec, son also of the late Mr. Gerald Polec, is an alumnus of Belleville High School. He is in the electrical field.

A July 1987 wedding is planned.

Marion Pettineo Jr. of Belleville announces the engagement of his daughter, Karen, to Robert Hartman Jr., son of Mr. and Mrs. B. Hartman Sr. of Bloomfield.

The wedding is planned for May, 1988.

Miss Pettineo, an alumna of Belleville High School, is with BASK Corp., Clinton.

Mr. Hartman, a graduate of Bloomfield High School, is with Hoffmann-La Roche, Nutley.

### Did you know

that we do not charge for putting your engagement, wedding or anniversary picture in the paper? And that most other papers do? All we ask is \$1 for postage and handling if you want your picture returned.

Enjoy Making Your Own Holiday Gifts

## Cindy's Ceramic Studio

Hours: Mon.-Tues.-Wed. - 7 p.m.-9:30 p.m.  
Thurs. - 10 a.m.-1 p.m.  
Sat. - (no classes) 10 a.m.-1 p.m.

Pleasant and Friendly Atmosphere

**FIRST CLASS FREE**

classes, greenware, gifts & party-favors

759-9208 390 Washington Ave. Belleville 751-4292

## Anniversary celebration



Golden day — Mr. and Mrs. Philip Meola celebrated their 50th wedding anniversary Sept. 7 at the Landmark II, East Rutherford. The affair was hosted by the couple's four daughters, Etta Chialfallo, Phyllis Meola, Eileen Rollieri and Deborah Meola. Over 100 people attended the anniversary dinner including friends, relatives and seven grandchildren. The couple has lived in Belleville for over 30 years.

## Octoberfest October 18 at VFW post

VFW Post 275, 17 Belleville Ave., will host an Octoberfest 8:30 p.m. until 2:30 Oct. 18 at the post home.

Tickets at \$15 include an old fashioned dinner with all the trimmings, free beer and soda and a live polka band.

For tickets, call 667-7486 or (759-9651).

**BEN'S  
LOCK AND GLASS**  
(Formerly of Contemporary Glass)

- Plate & Safety Glass Replacements
- Commercial Door & Closer Repairs and Installation
- Replacement Windows
- Storm Windows & Doors
- Sliding Patio Doors
- Plexiglass
- Lexan

- Screens Repaired
- Custom Mirrored Walls
- Tub & Shower Enclosures
- Locks Installed
- Keys Made
- Furniture Tops
- Shutters

**FREE ESTIMATES!**

**CALL TODAY 661-3857**

### Color

is beautiful but black and white prints much better. You'll be happier with the results. Your photographs can easily take a black and white print for newspaper purposes, but tell him you need one BEFORE he comes to the church.

**Elaine's  
Hair Designs**

148 Little St.  
Belleville, N.J.  
**759-9039**

Open Tues. - Sat. electrolysis

**BELLEVILLE - KEARNY  
OBSTETRICS - GYNCOLOGY**

**HOWARD GRODER, M.D.**  
**JEFFREY ROSEN, M.D.**

**HIGH RISK PREGNANCY  
INFERTILITY**

Clara Maass  
Professional Building  
5 Franklin Avenue  
Belleville, N.J. 07109  
759-0700

Arlington  
Medical Building  
837 Kearny Ave.  
Kearny, N.J. 07032  
991-1519

"Serving The Community For 40 Years"

## PUBLIC NOTICE

Commissioner Michael P. Pizzi, Director of Public Affairs, has set aside the following date and hours for our Mini-Health Fair

**WEDNESDAY — OCTOBER 15, 1986**  
**FROM: 9:00 a.m. to 1:00 p.m.**  
**6:00 p.m. to 8:00 p.m.**

THE SERVICES AVAILABLE WILL BE:

1. Health Clinic under the direction of A.J. Scolamiero, M.D. and Sharda Sharma, M.D.
    - A. Flu Vaccination
    - B. Diabetic Screening
    - C. Blood Pressure Screening
  2. Podiatry Screening Clinic (Foot Care) under the direction of Frank P. Arena, D.P.M.
  3. Oral Cancer Screening Clinic under the direction of Palmer Burde, D.D.S.
  4. Introduction to Chiropractic - John Longo, D.C.
  5. Eye Screening Clinic by James A. Parisi, M.D.
- FROM 6 p.m. to 8:00 p.m.**
- The Above Clinics Will Be Held At The Health Department Building  
383 Washington Avenue • Belleville, New Jersey

### SPECIAL NOTICE

A FLU CLINIC WILL BE HELD AT THE ALL PURPOSE  
ROOM PUBLIC SCHOOL #4, MAGNOLIA STREET, ON  
OCTOBER 15, 1986 FROM 5 P.M. TO 7 P.M.

## FREE DRAWING FOR PRIZES

PRIZES DONATED BY:

1. Peoples Bank	\$100.00 Savings Bond
2. Commissioner Michael P. Pizzi	\$100.00 Savings Bond
3. First Jersey National Bank	\$100.00 Savings Bond
4. First DeWitt Savings	\$50.00 Savings Account
5. Provident Savings Bank	\$50.00 Savings Bond
6. Pathmark, Silver Lake	\$25.00 Gift Certificate
7. Pathmark, Washington Ave.	\$25.00 Gift Certificate

APPLICATION BLANKS ARE AVAILABLE AT THE TWO CLINIC SITES  
The Clinic Is Open To Belleville Residents Only

THOMAS J. LONGO  
Health Officer

(201) 450-3393

MICHAEL P. PIZZI  
Commissioner

**Grand Union Consumer Price Finder**

**Grapes and other Fruits and Vegetables:**  
 What about produce prices at Grand Union? You know you pay the lowest everyday regular prices for your groceries at Grand Union, but what about produce? Ahh, one of our strong points. Sure, you want a good price, but most important, you want the good taste and freshness of top quality. That good low price is only good if the produce is good. We buy the best for you, whether locally, or far afield. Since you get the lowest possible price for the best possible produce, you get the best value at Grand Union.

**Only the best, always for less.**

U.S.D.A. Choice Fresh American Spring  
**Whole Leg of Lamb**  
 Oven Ready Lb. **179**

Tomato Pure (28-oz.), Crushed (28-oz.) or Imported  
**Pope Plum Tomatoes**  
 35-oz. Can **69¢**

**Super GRAND UNION Coupon**  
 White Microwave, Colloated or Designer  
**Bounty Paper Towels**  
 One 88-Sheet Roll **49¢**  
No Minimum Purchase Required With This Coupon. Good Oct. 5 thru Oct. 11. Limit One Coupon Per Customer.

U.S.D.A. Grade 'A' Fresh Roasting Chicken  
**Perdue Oven Stuffer**  
 5 to 6 Lbs. **89¢**  
 Lb.

Grand Union - Regular or  
**Rippled Potato Chips**  
 6 5-oz. Pkg. **79¢**

**Super GRAND UNION Coupon**  
 Regular or Caffeine Free Tab or  
**Coke or Diet Coke**  
 One 2 Liter Btl. **79¢**  
No Minimum Purchase Required With This Coupon. Good Oct. 5 thru Oct. 11. Limit One Coupon Per Customer.

Regular, Tartar, Mint or Gel  
**Crest Toothpaste**  
 4.6-oz. Tube **99¢**

Fresh Tender  
**SnoWhite Cauliflower**  
 Head **99¢**

**Super GRAND UNION Coupon**  
**Sunkist Orange Juice**  
 One Half Gal. Carton **99¢**  
No Minimum Purchase Required With This Coupon. Good Oct. 5 thru Oct. 11. Limit One Coupon Per Customer.

**THE BUTCHER BLOCK      PRODUCE      GROCERIES**

U.S.D.A. Choice Beef  
**Boneless Fresh Brisket**  
 Thin Cut Lb. **199**

Perdue - U.S.D.A. Grade 'A' Fresh  
**Oven Stuffer Chicken Breasts**  
 Whole with Ribs Lb. **179**

California - Sweet Eating  
**Valencia Oranges**  
 113 Size Bag of 10 **199**

Regular or No Salt Added (Beans Corn 11.2 oz. 10 Kitchen Sliced, French Style or Cut Green Beans 11-lb.) or Cream Style or Whole Kernel  
**Green Giant Corn or Peas**  
 17-oz. Can **39¢**

April Soft  
**Downy Fabric Softener**  
 46-oz. Cont. **289**

**Leg of Lamb** **189**  
 U.S.D.A. Choice Fresh American Spring Lb.  
**Rib Lamb Chops** **399**  
 U.S.D.A. Choice Fresh American Spring Lb.  
**Lamb Chops** **449**  
 U.S.D.A. Choice Fresh American Spring Lb.  
**Lamb for Stew** **99¢**  
 U.S.D.A. Choice Fresh American Spring Trimmed Lb.  
**Lamb Chops** **219**  
 U.S.D.A. Choice Fresh American Spring Blade Bone Lb.  
**Top Chuck Steak** **229**  
 U.S.D.A. Choice Boneless Beef Lb.

**Drumsticks** **89¢**  
 Perdue - U.S.D.A. Grade 'A' Fresh Chicken Lb.  
**Drumsticks Turkey** **79¢**  
 Chubby brook Grade 'A' Fresh Lb.  
**Fresh Spareribs** **199**  
 Whole Lb.  
**Smoked Ham** **219**  
 Smithfield - Boneless Water Added Lb.

**Red Grapes** **89¢**  
 California - Sweet Eating Lb.  
**Fresh Avocados** **89¢**  
 Each.  
**Cucumbers** **4 99¢**  
 Firm, Crisp Lb.  
**Seedless Grapes** **129**  
 Thompson - White Lb.  
**Idaho Potatoes** **149**  
 Large - Baking Lb.  
**Juicy Lemons** **79¢**  
 Farm King Bag of 6

**Spaghetti** **3 100**  
 Price - Reg. of 10 or Fibers Lb.  
**Dynamo Liquid** **299**  
 Heavy Duty Laundry Detergent Half Gal. Cont.  
**Pepsi** **199**  
 12-oz. Can  
**Cream Cheese** **69¢**  
 8-oz. Pkg.  
**Tomato Paste** **4 100**  
 Pkg. Imported Lb.  
**Apple Juice** **159**  
 Mott's - Regular or Natural Half Gal. Btl.

**Glad Trash Bags** **199**  
 With Two Ties Pkg. of 20  
**Peanut Butter** **329**  
 Margo - Chunky or Chunky 40-oz. Jar  
**Raisin Squares** **199**  
 Kellogg's - Branched Raisin 16-oz. Pkg.  
**Mayonnaise Kraft** **149**  
 Kraft Lb.  
**Cran-Raspberry** **229**  
 11-oz. Jar  
**Wild Rice** **169**  
 Pappas Bros. - Golden 16-oz. Pkg.

**THE CORNER DELI**  
**Turkey Breast** **139**  
 Poultry & Turkey Qtr. Lb.  
**Swiss Cheese** **199**  
 Half-lb. Imported  
**Deluxe Bologna** **159**  
 Fritz Clover - Natural Casing Half Lb.  
**Back Back Ribs** **599**  
 In-Store Prepared Pork Lb.

**THE BIG FREEZER**  
**Orange Juice** **99¢**  
 Sunkist - Concentrate 12-oz. Can  
**T&W Ice Cream** **299**  
 Assorted Flavors Half-Gal. Quart  
**Little Ears Birds Eye** **159**  
 Cob Corn Pkg. of 4 Ears  
**Shoestrings Ore-Ida** **199**  
 Fresh Potatoes 40-oz. Pkg.

**DATE-LINE DAIRY**  
**Sour Cream** **79¢**  
 Grand Union Lb. Cont.  
**Promise Margarine** **89¢**  
 1-lb. Pkg.  
**Tomato Juice** **149**  
 Campbell's - Chilled Half Gal. Cont.  
**Biscuits** **4 89¢**  
 Homestyle or Bimble's Refrigerated 8-oz. Cans

**HOME & FAMILY**  
**Johnson's Baby** **179**  
 Baby Wipes 100-ct. Btl.  
**Johnson's Baby** **269**  
 Baby Wipes 100-ct. Btl.  
**Johnson's Baby** **199**  
 Baby Wipes 100-ct. Btl.  
**Anacin Caplets** **319**  
 100-ct. Btl.

**NATURAL BEEF**  
 It's now available at Grand Union. And it's USDA Choice. Look for the Natural Beef Label. It tells the story.

**GRAND UNION Coupon**  
**15¢ Off**  
 With This Coupon And Purchase Of One 7-oz. Pkg. - Regular or Spiral 15-oz. Dinner  
**Kraft Macaroni & Cheese**  
 Coupon Good Oct. 5 thru Oct. 11. Limit One Coupon Per Customer.

**GRAND UNION Coupon**  
**20¢ Off**  
 With This Coupon And Purchase Of One 24-oz. Pkg. - Breakfast Cereal  
**Kellogg's Corn Flakes**  
 Coupon Good Oct. 5 thru Oct. 11. Limit One Coupon Per Customer.

**GRAND UNION Coupon**  
**25¢ Off**  
 With This Coupon And Purchase Of Three 12-oz. Btl. - Assorted Aquadine Table Wine  
**Beechnut Baby Food**  
 Coupon Good Oct. 5 thru Oct. 11. Limit One Coupon Per Customer.

354 Main Street, Belleville;  
 505 Allwood Rd., Clifton;  
 710 Bloomfield Ave., Glen Ridge



# Belleville Times SPORTS

## Buc Shots



Although its record is just 14, the Belleville gymnastics team is definitely heading in the right direction.

The team, under third year coach Rex Iannuzzi, has faced a difficult schedule in the early going. The team was defeated in its opener by powerful Clark, then lost a pair of matches to Linden, 89-65 and 78-61, and Ridgewood, 87-30-75-05. Then last week Belleville posted a victory against Hackensack, 89-65-71-35, then lost an unbelievable match to an awesome squad in Brearley High School, 101-15-89-6. The 89-6 points is a team high for the campaign and Iannuzzi said, "in my eye, that's a win."

When a team breaks the 90-point mark, it's considered good. You can imagine how proud a squad is when it breaks that.

To see the girls challenging a squad like Brearley, Clark and Ridgewood shows the development the program has made throughout the years at Belleville High.

Carol Graffigna started the gymnastics squad in the Spring of 1980. In 1981, the sport moved to the fall, and slowly, but surely, the team began to make strides. It wasn't easy and victories weren't coming quickly, but the nucleus was developing.

Griffiths stepped down as varsity coach following the 1983 campaign and Iannuzzi began his tenure in the fall of 84 with a team that posted a 2-3 record last year.

That first year was very enjoyable, recalled the coach. We had a 2-3 record, but there were some good kids on that team. It was a good way to break in.

Among the athletes on that squad was Linda Wujciak and Tina Lemongella, both of whom were very talented gymnasts who kept their team in a lot of the matches.

In '84, recalled Iannuzzi, we had 13 girls come out for the team. Before the season ended, we had 17 girls on the roster. The sport was picking up interest as the year went on.

Last season, the team cleared the winning hurdle, posting a 6-4 mark, the first winning campaign in the program's history. In 1985, 21 girls came out for the team.

The victories helped, Iannuzzi said. "We started to get some good crowds for the home matches. I remember a night match we had with Teaneck, at home. We had the bleachers pulled out on one side and the stands were packed. The crowd was really supportive and we won the match. I remember getting on the mike after the match and thanking the crowd for its support."

In 1985, a junior named Kelli Glunk made the scene for the Belleville gymnasts. All she did was advance to the state finals, competing in all four events, the balance beam, uneven parallel bars, floor exercise and vaulting. A freshman, Joell Veltre, also advanced to the state sectionals and finished as the team captain.

This year, the team had 23 girls come out in September. Alan, the Board of Education approved the addition of an assistant coach to the program.

That was a big help, Iannuzzi said referring to his new assistant, Donna Richhardt. "She is working very well with the girls. Having that extra coach really helps, especially with the larger turnout we've had. We can give the kids more in-school attention."

Although the girls have won just one match in the early going, the results have been impressive. Glunk won two events against Linden, vaulting and balance beam. She placed third in the floor exercise and second in uneven parallel bars. In that match, Veltre performed well in floor exercise and a freshman, Nicole Zelma, did well in vaulting and balance beam.

Against Ridgewood, Glunk won the floor exercise and bars and took second in vaulting and balance beam. Veltre placed third in the floor exercise.

Glunk and Veltre have already clinched a berth in the state sectionals for 1986. Last year, the two girls were the first in Belleville history to advance to the sectionals.

In addition to Glunk and Veltre, Danielle Lyman is the team captain this fall. Alise Davies, who has improved steadily during her career, entered her senior year gearing to go, however she has been hit by injury. Davies returned to the lineup against Brearley after having eight stitches removed from her finger. With a healthy Davies, the Bucs can definitely improve.

Final barriers has been out with a bad back, but she, too, is looking to return to the lineup shortly. Nicole Pucciarello has been hampered by a torn stomach muscle, however the freshman is doing better and, once again, is looking to return shortly.

Zelma has been working in all four events and according to Iannuzzi, has been very impressive.

She's a hard worker, the coach said. "She definitely has the talent."

Other talented youngsters on the '86 roster include Melissa Muscara, Samantha Cotter and Laura Nardone.

Iannuzzi noted that all three of those girls have been working hard and seem to have the ability necessary to compete on the varsity level.

We have a good future, the coach said. "We won't be a powerhouse, but we'll be good. The kids have to start at a young age. When they come out as freshmen, it takes a year just to teach the technique. The earlier they get involved, the better."

Iannuzzi suggested that prospective gymnasts start at the age of 7 or 8. Some coaches recommend they start even earlier than that.

The girls are favored to win its next three matches and are still quite optimistic about a winning season in 1986. Based on its early scores, it looks like a good bet that the team will finish with a winning campaign.

(continued on page 17)

## Seek first victory tomorrow night

# Ridgewood blanks Belleville 14-0 at Municipal Stadium

A 55 yard touchdown pass from quarterback Paul Tortore to split-end Steve Smith in the third quarter spelled the difference as Ridgewood defeated Belleville 14-0 at Municipal Stadium last Thursday night, spoiling the Bucs home opener before a large crowd.



Strategy session — Head coach John Senesky (right) sends play in with Al Best, No. 33, a senior running back. Buc lost to Ridgewood October 2 in home game opener. (Photo by Chris Lawlor)

highly mobile passer was kept in check throughout most of the evening by an aroused Buc captain defense, however his pass early in the third quarter gave the Bergen County school now life after the two teams had battled to a scoreless tie in the first half.

We had our scoring opportunities, said head coach John Senesky, who watched his Bucs get blanked for the sixth time in the last seven games, dating back to the fifth game of the 1985 season. We're not making that big play between the 20's (yard line). We have some players with breakaway potential, but we haven't been able to take advantage yet.

The coach was very happy with the Buccaneer defense, that allowed the potent Ridgewood offense just six points through most of the contest. The final Ridgewood tally came with seconds remaining in the game, following an interception deep in Belleville territory.

We the coaches were very happy with the play of Joe Cavallaro, Andre Graham and John Madi. Senesky said. They all had fine games. Joe did a good job in reading the offense and was in on a number of tackles.

Belleville had the first threat in the first quarter. Running back Jim Dunphy returned a Ridgewood punt 22 yards to the Ridger 31. However, the Ridgewood defense met the challenge, allowing just one yard rushing on three plays and Jame Galoto was forced to punt for Belleville.

Galoto, by the way, played an exceptional game for the Bucs, coming through with a diving interception in the second half and nailing some long punts.

Early in the second quarter, Belleville recovered a fumble on the Ridgewood 15, but two plays later the Bucs returned the ball when James Pedicaro intercepted Jeff Spillsbury and returned the ball to the Belleville 39.

Ridgewood's first score came in the third quarter. Following a Galoto punt, Tortore started from his own 31. He hit Smith with a four yard pass and John

Langdon gained 10 yards to the Ridgewood 45. On the next play, Tortore found Smith, who had split the seam in the Buc secondary and the speedy receiver galloped untouched the rest of the way for a Ridgewood score. The point after kick was blocked, but the Bergen County power had the lead.

Belleville did threaten to crack the scoreboard in the waning seconds of the game, moving as close as the Ridgewood two yard line, but the clock hit :00 before the Bucs could call time out and the game ended at 14-0.

Although the Bucs were not hit with any injuries in the game, the quarterback situation is up in the air. Back up signal caller Dan Senesky is sidelined with mononucleosis and Spillsbury was reported sick over the weekend and his status is questionable for the Montclair game.

If both players cannot go, then coach Senesky will turn to senior Al Best, who played the position on occasion last season, or junior Steve Schwed, who is quickly learning the system in practice this week. Schwed, at 6'1" tall, has not taken a snap in a varsity game before, but is a good athlete and fast learner.

NOTES: Montclair breezed by Don Bosco Prep, 34-12 two weeks ago. The Mounties were upset by Bergen Catholic, 14-6 in its opener on September 20. Montclair has been to the Group IV, Section 11 championship game the past four seasons, meeting Union in all four finals. The Mounties upset the Farmers in the '83 final, and lost in 1982, '84 and '85. Last years game was a real heartbreaker, as Montclair had the favored Farmers on the ropes until the waning minutes, when Tony Stewart ran 50 yards for the winning score. Belleville last beat Montclair in 1980, 7-6 at Municipal Stadium. Ironically, that win came on a Friday night. The team's have not played a night game since the '80 contest. Montclair has won the past four meetings by scores of 22-14, 28-0 and 20-0. The teams did not play in 1981. Bucs will battle Eastside on Saturday, October 18, on the road in week four.

## Hopeful of reaching .500 mark

# Belleville gymnastics squad splits two matches last week

Although the Belleville gymnastics team split two matches last week, beating Hackensack and losing to Brearley, head coach Ray Iannuzzi couldn't have been happier with his teams effort.

The girls, now 14, were in Teaneck last Tuesday and will host Bloomfield tonight, at 6:30 p.m. Next Tuesday, the girls are host to Hasbrouck Heights, in another 6:30 p.m. start. Belleville is favored in all three of those matches and is hopeful of reaching the .500 mark after its first eight matches. All told, the team has 12 matches this season.

Despite losing to Brearley, Belleville tallied its highest point total in school history, compiling 89.6 points. However, the home team amassed an impressive 101.15 points and left coach Iannuzzi quite impressed.

They (Brearley) were really good, the coach said. "Any time you score in the mid 90's, you've done quite a job. But when you score over 100, well that's one of the best teams in the state. We did very well. In

my eyes, that's a win for us. I couldn't have asked our team to do much more than that."

Against just about any other team, 89.6 points would have been a victory. However, this wasn't any other team and the girls lost a tough match.

In the vaulting exercise, senior Kelli Glunk finished third with a score of 8.4. Belleville was swept in the uneven parallel bars, but Glunk came back to post a pair of first place finishes in the balance beam and floor exercise with scores of 8.35 and 8.4 respectively.

To finish first in two events against a team like that is quite a tribute to her (Glunk's) talents, Iannuzzi said. "She wasn't the only one, either. We got some good performances from some of our younger girls."

Most notably, sophomore Joell Veltre scored an 8.25 in the floor exercise and freshman Nicole Zelma continued her fine work in the all-around exercises. Her best event in the Brearley event was vaulting, where she tallied a 7.4.

Belleville gained its first victory earlier in the week, downing Hackensack, 86-65-71-35.

Once again, Glunk led the way for Belleville, taking first place in all four events.

The senior won the vaulting exercise, with a score of 8.75. Zelma placed second in vaulting with an impressive score of 7.6.

In the uneven parallel bars, Glunk won with a score of 7.75. Belleville swept the balance beam with Glunk, Zelma and Kandi Lyman leading the way with scores of 8.75, 7.9 and 7.0 respectively. Finally, Belleville capped the victory with a first and second place finish in the floor exercise. Glunk tallied an 8.95 and Veltre finished a close second with 8.6.

Veltre's performance in the floor exercise against Hackensack clinched a spot in the sectionals for the talented sophomore for the second year in a row. That's quite an accomplishment for a young athlete to attain. The sectionals attract some of the best athletes in the area, and for a sophomore

to already be invited twice is quite a tribute to her talents.

We're looking to break the 90 mark, Iannuzzi said, referring to the team goal of 90 points in a match. We came close last week and hopefully, we'll continue to improve.

NOTES: Sophomore Melissa Muscara competed and did very well in the Hackensack match. She took part in the vaulting exercise. Girls have been hit by injuries. Alise Davies, a senior, is just returning to the lineup after having eight stitches removed from her finger. Freshman Nicole Pucciarello has a torn stomach muscle and is just starting to work out again.

Glunk is looking to return to state sectionals in all four events as she did last season. She has already clinched a spot in the sectionals for two events and is in good shape for the other two. Match with Bloomfield is for trophy that is awarded to winner of annual Belleville-Bloomfield match. Belleville won last season and is hoping to retain the cup for another season.

## Belleville fields 8 teams

Soccer Association  
kicks off season

By Bruce Morgan

The Belleville Soccer Assn. kicked off the 1986 season on Sept. 13. The B.S.A. will be competing this year in the newly formed Garden State Youth Soccer League.

The B.S.A. is coming off an impressive season last year while competing in the Minolia League. The Bandits placed first in the 6th division last year, while the Strikers and Spirit placed second in the 5th division. In the 4th division the Breakers placed 3rd, while the Blast placed 4th in their conference.

Belleville has two teams representing each division this year and opened this year's season at home playing each other.

**6th Division** — The Devils and Killer Bees played to a 1-1 tie with goals scored by Danny Rispoli of the Devils and Ernie Scari of the Bees. Goalies were Dave Auer back and Mike Nikodjovic.

Game two featured the Bees in Lodi resulting in a 2-2 tie, while the Devils defeated St. Peters 6-0. Scoring came from Lawrence Martin, 3 goals, D. Rispoli, John Dias and Joe Tisk scoring one each.

**5th Division** — The Strikers defeated the Bandits 3-0. Scoring came from Jim Berg, Jerry Russo, and Mike Guzman with 1 each, and assists from Steve Diegez and Ian Samuel.

The Bandits defeated St. Peters in game two with Victor Mesce scoring 3 times, Christ Detomasso and Anthony Raimo with 2 each, Mesce and Aaron Stanecki were in goal.

The Strikers defeated Lodi 7-0 for their second win. Scoring came from Ivon Martin and lime Berg, 2 goals each, Joe Colucci, Jerry Russo, and Paul Aiello 1 each. Assists came from A. Frantantoni, Diegez and Samuel.

**4th Division** — The Breakers defeated the Spirit 3-1 in game one. Goals came from Dennis Dework, 2, and Jason Verotta, 1, for the Breakers. Goalie was Mike Morgan. Angelo Bagnara scored for the Spirit while Mike Percio played a fine game in goal.

Week two saw the Spirit defeat St. Peters 7-0 with goals coming from Chris Ricci, 3, A. Bagnara, Brad Koch, Jeff Vogel and Mark Bianchini, 1 each. Goalies were M. Percio and O'Brien.

The Breakers were defeated by Lodi 4-1. The lone Breaker goal was scored by Naimet Savad.

**3rd Division** — The Blast defeated St. Peters 1-0 in a well played game. The Blast score came from Rich Pretto, John De Mauro playing in goal.

More Soccer Association coverage October 16 in Belleville Times Sports.

## FALL SCHEDULES

1986 Junior Bucs  
Football ScheduleBelleville Recreation Department  
Phil Linfante, League Director

## MIDGET DIVISION

Date	Opponent	Time	Location
Oct. 19	A Nutley	1 p.m.	Park Oval
Oct. 25	H Bloomfield	5:30	Stadium
Nov. 1	H Kearny	5:30	Stadium
Nov. 16	A Nutley	1 p.m.	Clifton JHS
Nov. 21	H Kearny	7 p.m.	Stadium

Each team in the Midget Division plays all opponents twice.

## VARSITY / JV SCHEDULE

Date	Opponent	Time	Location
Oct. 11	H Clifton	JV 6:00	
		Vars. 7:30	Stadium
Oct. 19	A Nutley	JV 2:00	
		Vars. 3:30	Park Oval
Oct. 25	H West N.Y.	JV 6:30	
		Vars. 8:00	Stadium
Nov. 1	H Kearny	JV 6:30	
		Vars. 8:00	Stadium
Nov. 7	JV Consol (6 vs 7)	6:00	TBA
	Vars. Consol (6 vs 7)	7:30	
Nov. 8	A Vars playoffs	6:00	Kearny
	(3 vs 2, 4 vs 1)		
Nov. 9	A JV playoffs	1:00	Clifton
	(3 vs 2, 4 vs 1)		
Nov. 14	A JV consol.	6:00	Nutley
	(winner 7-6 vs 5)		
	Vars. consol.	7:30	Nutley
	(winner 7-6 vs 5)		
Nov. 15	A Vars & JV	7:00	M.S.C.
	Championship		

Each team plays all opponents once during the regular season.

## BHS Cross Country

Oct. 14	Nutley	H	4 p.m.
Oct. 16	Paterson Kennedy	A	4 p.m.
Oct. 21	NNJIL Meet	A	

## BHS Football

Oct. 10	Montclair	H	7:30 p.m.
Oct. 18	Paterson Eastside	A	1:30 p.m.
Oct. 24	Bloomfield	H	7:30 p.m.
Nov. 1	Passaic	H	2 p.m.
Nov. 8	Clifton	A	1:30 p.m.
Nov. 15	Paterson Kennedy	A	1:30 p.m.
Nov. 27	Nutley	H	11 a.m.

## BHS Gymnastics

Oct. 10	Bloomfield	H	6:30 p.m.
Oct. 14	Hasbrouck Hts.	H	6:30 p.m.
Oct. 17	Montclair	H	6:30 p.m.
Oct. 21	Clifton	H	4 p.m.
Oct. 23	Neuman Prep	A	4 p.m.
Oct. 28	Verona	H	4 p.m.
Oct. 31	League Meet		
Nov. 6	Kearny	H	4 p.m.

## BHS Soccer Schedule

Oct. 10	Bloomfield	H	4 p.m.
Oct. 15	Paterson Eastside	A	4 p.m.
Oct. 17	Montclair	H	4 p.m.
Oct. 20	Passaic	A	4 p.m.
Oct. 22	Paramus Catholic	H	4 p.m.
Oct. 24	Nutley	H	4 p.m.
Oct. 27	Paterson Kennedy	A	4 p.m.
Oct. 29	Hackensack	H	4 p.m.

## BHS Volleyball

Oct. 10	Paterson Kennedy	H	4 p.m.
Oct. 14	Clifton	A	4 p.m.
Oct. 15	Bloomfield	H	4 p.m.
Oct. 20	Paterson Eastside	H	4 p.m.
Oct. 21	Immac. Heart	A	4 p.m.
Oct. 22	Montclair	H	4 p.m.
Oct. 23	Neuman Prep	H	4 p.m.
Oct. 24	Passaic	A	4 p.m.
Oct. 27	Paramus Catholic	H	4 p.m.
Oct. 28	Benedictine	A	4 p.m.
Oct. 29	Nutley	H	4 p.m.
Oct. 30	Neumann Prep	H	4 p.m.
Oct. 31	Paterson Kennedy	A	4 p.m.
Nov. 3	Hackensack	H	4 p.m.
Nov. 4	Good Council	H	4 p.m.

## BHS Girls Tennis

Oct. 9	Paterson Kennedy	H	4 p.m.
Oct. 14	Ridgewood	H	4 p.m.
Oct. 16	Clifton	A	4 p.m.
Oct. 21	Bloomfield	H	4 p.m.
Oct. 23	Paterson Eastside	A	4 p.m.
Oct. 28	Montclair	H	4 p.m.
Oct. 30	Passaic	A	4 p.m.
Nov. 3	Nutley	H	4 p.m.
Nov. 5	Paterson Kennedy	A	4 p.m.
Nov. 8	St. Peter's	H	11 a.m.

Junior varsity schedule is the same.

SAVING BABIES  
... TREATMENT BEFORE BIRTH

Debbie Whitmore's first child, Justin, nearly died when he was born. The reason: biotin dependency, an inherited birth defect.

When Mrs. Whitmore became pregnant again, prenatal diagnosis showed that her second child, Nicole, also had inherited the birth defect of body chemistry.

Through a March of Dimes program at the University of California, San Francisco, Mrs. Whitmore began special treatment when she was 23 1/2 weeks pregnant.

This was the FIRST TIME that a patient with biotin dependency was diagnosed and treated before birth. As a result, Nicole was born free of the disorder.

You can help make miracles happen.

Support  
**March of Dimes**  
BIRTH DEFECTS FOUNDATION

## SUB MANOR

118 Washington Ave. Belleville  
759-9111

Friday - Oct. 10 - Buy 1  
Whole Sub GET 1/2 FREE  
(same kind) (cold only)

AM Daily Special - Bagel & coffee...75c  
3 ft. & 6 ft. Subs Our Specialty

Hours: Mon.-Fri. 10am-7pm - Sat. 10am-5:30pm

7 WAYS TO REDUCE  
YOUR AUTO INSURANCE COST!

Stop in with your auto insurance policy and let us show you how!  
Our computer is programmed to search for the best coverage at the lowest cost to suit your needs  
HERE TODAY - HERE TOMORROW  
serving the area since 1952

HARVEY KRAMER AGENCY INC.

INSURANCE

475 Washington Avenue - Belleville 201-751-1266

Jr. Bucs crush  
Bloomfield

The Junior Buccaneers opened the season Saturday, Sept. 20 with a 32-6 win over Bloomfield at

Foley Field

The Bucs came out with a strong running attack lead by Art Caruso. Michael Chieffo lead all rushes with 114 yards and three touchdowns.

Also, Sean Kimball rushed for a 55 yard touchdown and returned an interception 35 yards for another touchdown.

Anthony Mastpein rounded out the scoring by adding two extra points after touchdowns and rushed for 31 yards.

The Bucs were anchored on defense by George Shimokawa, Carl Morris, Rich Ferrugia, all of whom helped hold Bloomfield to only a first quarter touchdown.

**Maaco**  
Auto Painting

3 Million Satisfied  
Maaco Customers  
Have Made Us Number  
One In Auto Painting

Quality Workmanship...  
And a Price to fit Every Budget

Prices AS LOW AS

**\$99.<sup>95</sup>**

- Thousands of color choices
- Oven-baked finish
- Free estimates
- Expert body repair
- Written guarantee

Center Locations

**NUTLEY**  
113 E. Centre Street  
(behind 87 E. Centre St.  
betw. Washington Ave.  
and River Rd.)

235-0801

SHOP HOURS: Mon. - Fri. 8 a.m. - 6 p.m., Sat. 9 a.m. - 5 p.m.

MAACO Auto Painting &amp; Bodyworks are independent franchisees of MAACO Enterprises, Inc. Prices and hours may vary.

© MAACO Enterprises, Inc. 1986

(201) 759-3968 Licensed Dealer  
**BULLET HOLE**

Guns Ammo Handcuffs Shooting Equipment

Collector Guns Buy - Sell - Trade

338 Washington Ave.  
Belleville, N.J. 07109

**TIRES**

END OF SUMMER TIRE SALE  
sale ends Nov. 15, 1986

Featuring FREE Replacement Warranty for Road Hazard  
(Ask Rick & Linda for details)

ALL SEASON RADIALS

Low prices on All Season	List	SALE PRICE
155R13	\$49.95	\$29.95
185 75R14	\$66.00	\$46.50
205 75R14	\$75.00	\$49.45
205 75R15	\$85.00	\$49.95

All other sizes included in sale

FREE BRAKE SYSTEM SAFETY CHECK  
Shocks & Steering Suspension Check  
with every purchase  
mounting and balancing extra

**R & L HILLTOP AMERICAN**  
69 Union Ave. Belleville  
(corner of Union & Williams St.)  
751-5294 759-9670



# Cross country Bucs defeated by Eastside

The Belleville cross country team was defeated by powerful Eastside, 18-44, then lost a close one to conference rival Montclair, 26-30.

The 0.4 Bucs battled Passaic last Tuesday and will be host to West Essex this afternoon at 4 p.m. This Saturday the team will compete in the Essex Catholic Invitational, at Branch Brook Park. Next Tuesday, the Bucs

will host arch rival Nutley.

Head coach John Tosato saw his team battle one of the states best in Paterson Eastside last Tuesday.

"They are one of the best in the state, no doubt," the coach said last weekend. "It was a tough race. It was a very hot afternoon, approximately 87 degrees when the race started."

They (Eastside) have a hilly course, but our kids did pretty well."

Leading the pack was senior Craig Burden, who finished an impressive third overall, in a time of 17:39. The top five Eastside runners are known to run in a pack throughout the race, but Burden did a good job in breaking the pack and taking third

place overall.

He finished just 22 off the lead. Tosato said of Burden, "Greg Moriello was the next Buccaneer runner across, in a time of 19:03."

For the girls, junior Joyce Luongo was sixth in a time of 25:12. The girls lost by a score of 15-50.

Versus Montclair, Burden set a Belleville record on the home course with a time of 16:37. He was the overall winner of the race and was followed by

Moriello, who finished fourth in a time of 17:52. Right behind him was John Zurlo, in a time of 18:06, good for fifth place.

Greg Scheible was ninth, with a time of 19:44. David Rosamilia placed 11th in 20:26 and John Morrell debuted in at 21:47 in his varsity debut.

It was an excellent overall performance for the boys. In addition to Burden, the races turned in by Moriello, Zurlo, Scheible, Rosamilia and Morrell were career personal bests.

For the girls, Luongo had her best time of the season in 22:25. Ditto for Donna Lee Daudelin, who came through in 25:45. Gina Guarino had her best race ever, finishing in 29:06, good for fourth place. Diane Di Vincenzo also ran her best race, placing sixth overall in a time of 30:20.

At the Passaic County Coaches Invitational at Garrett Mountain last Saturday, Burden had a good day in the varsity race, finishing 46th overall in a time of 18:44.

## Lady Buc spikers bounce back to notch fifth straight victory

Showing the ability to bounce back, the Belleville volleyball team rallied for five straight victories after losing a match last Monday (September 29) to Ridgewood. The five wins in a busy week boosted the team record to an impressive 8-3.

The schedule does not let up this week. The girls battled Good Counsel last Tuesday and Teaneck yesterday. Tomorrow, the team is host to Kennedy at 4 p.m. Next Tuesday, a big game with Clifton is on tap at 4 p.m. from Clifton High. The following day, October 15, the Lady Bucs play host to Bloomfield, at 4 p.m.

Head coach Grace Worley is happy with her teams 8-3 record entering this weeks action.

"We had a pretty good week," the coach said referring to the five wins in six tries. "Against Ridgewood, we played a good first match, but our defense went bad in the final two games. We had bad passes on offense, we had bad sets and overall, didn't play well. We looked great in the first game."

Belleville won 15-7 in the first game, then lost in straight sets, 2-15, 6-15.

Belleville got its act back in gear the following day, with a

win over Immaculate Heart, 15-9, 15-8.

"We had a good game there," Worley said. "We had different movement and placement. It was a good win."

Belleville needed a similar effort to down a good Montclair team, 15-9, 15-7.

"That was more of a friendly match," the coach said. "The team knew each other pretty well. A lot of the girls went to camp with each other last summer. It was a nice atmosphere. The kids talked to each other during the match and got together afterward. We had good hustle in the match."

Traditionally, Belleville has had problems with Passaic, but this time the Lady Bucs pulled away early and won, 15-3, 15-6.

Passaic had some outstanding hitters, Worley said. Simone, Edw. Girds and Christine Melillo did a nice job in stopping their big players. Simone had good net play and Chris was good on the line.

Belleville continued the week with a 15-4, 15-12 win over Passaic Valley and finished it with a 15-11, 15-4 victory against Nutley.

"We were a little flat against Nutley," Worley said. "We were able to compensate against them, but we can't have those

lapses against teams like Ridgewood and Parahus. The kids have to learn not to let down, especially against the better teams."

One of those better teams will be Clifton, who is undefeated in conference play this season and are the defending NJHL champions. The Mustangs defeated the Bucs in an earlier match this season, and Worley is looking forward to the re-match.

The coach is getting good play from Christine Villano, a senior, Carolyn Gufrida and Renee Pettinoo.

The junior varsity team, with a 6-5 record, is led by Laurie Dondarski, Kathy Eng and Frish Donnelly. Susan Di Giulio is doing a good job in the service department. Gina Torre is playing well on the backline and Susan Auliero and Susan Farina continue to improve and are looking to gain a varsity position.

"Our JV team is young," Worley said. "I'm hoping to schedule some freshman matches. At that level, the kids need the playing time. The record isn't that important."



REFRIGERATOR PERRY is the Bears Triple-Threat.

## Empty 'The Refrigerator' at FOR PETE'S SAKE



Monday Nite Football  
Kickoff 9 P.M.

153 Belleville Ave. Belleville 759-1516

## Buc Shots

(Continued from page 15)

### Last Weeks Quiz

Eugene Cancelliere scored the touchdown in the 1980 Belleville-Montclair game, which the Bucs won, 7-6. Paul Scheuplen had the key interception late in the game to preserve the win.

### For This Week

The last time the Giants got off to a 4-1 start was 1968. What was the teams final record in 1968, who was the team quarterback and the teams head coach?

### Athlete of the Week

It has to be Kelli Glunk of the gymnastics team, who won all four events in Belleville's victory over Hackensack. The senior won two events in the loss to Bearley and has already clinched a spot in the sectionals.



### ENGAGING

This adorable Cape Cod which has been meticulously maintained has one bedroom, a den, an eat-in kitchen, living room, full bath and a sunken dining room (with a large rear window through which one has a lovely view of the nicely manicured yard on the first floor. There are two bedrooms on the second floor, providing space for the growing family or interesting hobby possibilities for adults. A newly painted exterior and freshly decorated interior plus new appliances in the kitchen and the inclusion of a washer and dryer makes this desirable home a sound economic choice as well. Call for an appointment to inspect! \$189,900.

**SCHULTZ REAL ESTATE**

628 Valley Road  
Upper Montclair - 746-5811



Belleville, NJ 07003 • Branches in Montclair, Ridgefield, Roseland, Springfield, and Union • Brokerage, Real Estate, Sales and Rentals • Call for details or to schedule a showing.



## Crown Chevrolet DRIVES DOWN THE COST OF BUYING!

Lease a Brand New '87 Chevrolet from Crown today and discover how little it costs to drive the car you've always wanted!

Model	Monthly Payment	Total of Payments
<b>CHEVETTES!</b>	\$91	\$4368
<b>SPRINTS!</b>	\$95	\$4752
<b>SPECTRUMS!</b>	\$125	\$6000
<b>NOVAS!</b>	\$135	\$6480
<b>CELEBRITIES!</b>	\$159	\$7632
<b>CAPRICES!</b>	\$278	\$8544
<b>SUBURBANS!</b>	\$191	\$9168
<b>CORVETTES!</b>	\$390	\$18,720
<b>PICK-UPS!</b>	\$138	\$6624
<b>VANS!</b>	\$153	\$7296
<b>BLAZERS!</b>	\$165	\$7920

### SUBURBAN TRADED CARS

<b>'85 CAVALIER</b> CHEVY, 4 dr, red, 4 cyl, auto trans, pwr steering & brakes, air cond, r defrost, stereo, 5420 miles. \$6588	<b>'84 WAGON</b> CHEVY Caprice, 9 pass, r rack V-8, auto trans, pwr steering, brakes, rear window lock, air cond, r defrost, stereo cassette, 42,508 mi. \$8988	<b>'83 SKYHAWK</b> BUICK T type, 4 cyl, auto trans, pwr steering & brakes, air cond, r defrost, stereo, 45,577 miles. \$5588	<b>'82 CITATION</b> CHEVY, 4 dr, hatchback, 6 cyl, auto trans, pwr steering & brakes, air cond, r defrost, 40,858 mi. \$4288
<b>'85 CUTLASS</b> OLDS, 4 dr, V-6, auto trans, pwr steering/brakes/windlocks, air cond, r defrost, stereo, 18,708 miles. Stock No. 3054P \$9988	<b>'84 IMPALA</b> CHEVY, 4 dr, 6 cyl, auto trans, pwr steering & brakes, air cond, r defrost, stereo cassette, 22,118 miles. A real beauty! \$7988	<b>'83 CENTURY</b> BUICK, 2 dr, 4 dr, 6 cyl, auto trans, pwr steering/brakes/wind, air cond, r defrost, stereo, 52,631 mi. St. No. 2906A \$7988	<b>'82 GRAND PRIX</b> PONTIAC, 2 dr, red, stereo, air cond, r defrost, stereo, 56,222 mi. \$5988
<b>'84 LE BARON</b> CHRYSLER, Lt. brown 4 dr, 4 cyl, auto trans, pwr steering/brakes, air cond, r defrost, stereo, 21,833 mi. \$6988	<b>'84 WAGON</b> CHEVY Celebrity, black, roof rack 6 cyl, auto trans, pwr steering & brakes, air cond, r defrost, stereo, 17,923 mi. Showroom new \$7588	<b>'82 BONNEVILLE</b> PONTIAC, 4 dr, 6 cyl, auto trans, pwr steering & brakes, air cond, r defrost, stereo, 52,612 mi. St. No. 2051P. Flawless condition! \$6488	<b>'82 LYNX</b> MERCURY, 4 dr, 4 cyl eng, auto trans, pwr steering & brakes, air cond, stereo, 47,159 miles. \$3988

**OVER 150 CARS & TRUCKS TO CHOOSE FROM!**

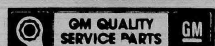
**100% FINANCING**  
Qualified buyers, including those with money down and up to 48 mos. to pay. All arrangements made on premises in minutes!

**LEASE OR BUY**  
Advertised payments are for 48 mo. closed end leases. Vehicles are not in stock. Allow 6-8 wks. delivery.

Prices exclude tax & MV fees

**'86 DEMOS & LEFTOVERS**

**Crown Chevrolet**  
New Jersey's Chevrolet Underpricer  
514 Washington Avenue, Belleville (201) 759-4200



GENERAL MOTORS CORPORATION

Mr. Goodwrench







Law and order — Keeping the peace at the Columbus Day Ball are (l. to r.) Nutley Municipal Judge Anthony Amato, Essey County Executive candidate and former Surrogate Judge Nicholas Amato, and Essey County Sheriff Tim D. Mason. (Photo by Christopher Bifari)



Pottery pantry — Cindy Pallante, owner of Cindy's Ceramic Studio in Belleville displays her finished greenware during grand opening ceremonies. (Photo by Jaye Tarantini)

## ...around town



Grand Marshal speaks — James Piro, grand marshal of the October 11 Columbus Day parade addressed the guests at the Columbus Day Ball with a stirring speech on proud Italian heritage. (Photo by Christopher Bifari)

**Pharmacy Footnotes**

Vincent Cozzarelli  
Reg. Ph.

### ASPIRIN AND THE STOMACH

There has been much talk in advertising campaigns lately about gastric upset caused by aspirin. Consider, however, that no more than five percent of people who take aspirin get an upset stomach. It does not mean that people who take aspirin get an empty stomach. Others take a type of aspirin that breaks up the relatively large pieces in the stomach. If aspirin is taken with milk, the incidence of stomach upset is somewhat less than the usual five percent. Otherwise, one may wish to try a little extra for aspirin combined with buffering products. There also is a very fine particulate aspirin available that provides a much adequate dispersal in the stomach.

We can provide you with all types of prescription medications at 20% MORE. PHARMACY, 318 Washington Ave. 759-1950. 759-1960. Free prescription delivery is available. Walkers, wheel chairs, crutches, canes and other assistive devices are stocked. We also have a fine choice of greeting cards, gift items, baby needs, cosmetics and toiletries. Hours: Daily 9 am-10 pm, Sundays 9 am-6 pm.

**HANDY HINT**  
Aspirin/naproxen, unlike aspirin, does not reduce fever or swelling.



### "WE WORK WELL TOGETHER"

Old Fashioned Expertise and High Efficiency Service  
Full Service Oil Company

- Plumbing & Heating Contractors
- Automatic Delivery • Budget Payments & Cash Discounts
- Design & Service Gas/Oil Heating Systems
- E-Z Credit Approval • 100% Financing

**WEIL-McLAIN**  
HIGH EFFICIENCY

**CEDAR HILL  
OIL CO.**  
485-6400

**FOR  
PROMPT  
SERVICE**

**PAR ENERGY**  
485-6404

**5 minutes via Rte. 21 from  
Belleville/Nutley**

The TRI-STATE  
Area's Largest  
**HONDA  
PONTIAC  
VOLVO  
Dealer**

COME IN FOR SUPER BUYS ON  
SUPER NEW & USED CARS.

You've heard us  
on WYNY and  
WINS radio

**City  
Motors**  
River Drive at Rte. 21  
Passaic Park  
**777-1600**

**GANTNER'S INC.**  
160 Franklin Ave., Nutley • 667-6622  
Houseware • Hardware • Luggage • Plumbing Supplies  
Electrical • Home Furnishings • Stationery • Paint

**PAINT SPECIALS**

Dutch Boy Flat Wall Paint \$8.99 gal.  
Dutch Boy Latex Semi Gloss \$12.99 gal.

**20% OFF**

All Picture Frames & Plaques  
All Rubbermaid Products  
All Garden Tools  
All Buxton Wallets & Key Cases  
All Basement Items  
All Children's Clothes - 50% off

Mon. & Fri. 9:00 a.m. to 8:15 p.m.  
Tues. Wed. Thurs. & Sat. 9:00 a.m. to 5:45 p.m.

## BEST OF BOTH WORLDS

"Personal Fitness Centers  
Where Fitness Gets Personal"

- personal supervision
- nautilus
- exercise classes
- nautilus leverage
- free weight machines
- free child care
- sun tan bed
- diet programs
- nutritionist
- massage therapy
- chiropractor
- showers
- yoga
- exercise bicycles
- nordic ski machine
- men's & women's locker areas



New generation nautilus  
free weight machines at  
the Belleville facility



Regular Nautilus  
machines in our  
Nutley facility

**Personal Fitness Nautilus Center**  
495 Franklin Avenue, Nutley • 661-0778  
163 Washington Avenue, Belleville • 759-6402

## **HIGH READERSHIP — EFFECTIVE ADVERTISING**

# **Belleville Times**

- **Complete In-Depth Coverage of All Local News**
- **Distribution by Mail Subscription and Newsstand**
- **Special Sections and Pages for:**
  - **Sports**
  - **Social Events**
  - **Front Page News**
  - **Editorials**
  - **Letters to the Editor**
  - **Classified Ads**
- **Special Inserts for Special Occasions**
- **Display Advertising That's Read With The Same Concentration as The News**

**THE NEWSPAPER THAT GIVES  
YOU HIGH READERSHIP AND  
HIGH SALES RESULTS**

## **ORECHIO PUBLICATIONS**

— SINCE 1894 —

**800 Bloomfield Avenue  
Nutley, New Jersey 07110**

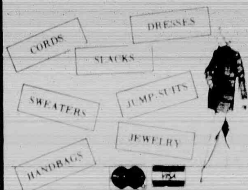
**(201) 667-2100**



# Columbus Day SALE



**COLUMBUS DAY SALE**  
TAKE 20% OFF OUR ENTIRE STOCK OF  
FALL CLOTHING. ONE WEEK ONLY  
OCT. 9-15



**CONFETTI FASHIONS**

28 Bloomfield Ave. Verona • 87-886  
Open Tue. Wed. & Fri. 10-6 • Thurs. 10-5  
Sat. 10-5 • Closed Mon.

## JAM MOTOR COACH, INC.

"STRETCH OUT IN STYLE"  
PERSONALIZED LIMOUSINE SERVICE  
WEDDINGS-FUNERALS-PROMS  
NEW YORK CITY  
ATLANTIC CITY-AIRPORTS

CALL 939-3604

Joseph A. Mastbeth, President

## JUST NAILS

260 BELLEVUE AVENUE, UPPER MONTCLAIR, N.J.  
744-3857

NOW OPEN 'TILL 8 TUESDAY THRU FRIDAY  
FEATURING THE GEL SYSTEM  
LASTS 3 TO 4 WEEKS. STRONGER THAN WRAPS  
NAIL ART SYSTEM

Barbara Desantis Les Carter

## UNIQUE GIFT SHOP

Specializing in hand made items for  
showers, weddings, christenings, etc.  
Monday thru Saturday  
50% Discount on Plushes

Friday and Saturday  
25% Discount on  
Everything in the Store

748-0155

Mon-Fri 10-8  
Sat 10-6

20 Montgomery St.  
Bloomfield, N.J. 07003

## Forever Tan

\$50  
per month  
unlimited sessions

featuring the WOLFF tanning system  
FALL SPECIALS

WE OFFER THE LOWEST PRICES IN THE AREA  
Receive a FREE T-SHIRT with one month's membership

260 Bellevue Ave., Upper Montclair  
Above Jon Rinaldi Townhouse Salon

Open Weekdays 9 a.m.-11 p.m., Sat. & Sun. 9 a.m.-7 p.m.  
PLEASE BRING THIS COUPON

\$29

6 visits  
receive FREE  
tanning product

783-0077

Italian American Dining Affordably Priced

**Christopher Anthony's  
Restaurant**  
(Located in the Riviera Tavern)



284-1788

26 Washington Ave.  
Nutley

New York Style Cafe

BE SEATED BEFORE 7:00 AND  
RECEIVE A COMPLEMENTARY  
GLASS OF WINE  
Oct. 2 to Oct. 25

## FOUNTAIN OF FLOWERS



340 BELLEVILLE AVE.  
BELLEVILLE  
751-5089

- Pumpkins
- Halloween Balloons
- Long Stem Roses - \$19 a doz.
- Fall Bouquets

## WOOD STRIP INC.

Furniture Stripping,  
Refinishing & Repairing

No water or lye used

Also Available:

Complete line of  
Home Use Products  
and Decorative  
Hardware

736-0615

4 Ashland Ave.  
West Orange



SMITH CORONA ENTERPRISE XT  
KEYBOARD CORRECTING ELECTRIC TYPEWRITER



- Correction Button
- Power Space Key
- Easy to Set Margins
- Double Walled Case
- Handy Preset Tabulator

Regular \$298.00

Special \$149

MANY OTHER SMITH CORONA MODELS  
AVAILABLE



## CLEARANCE SALE

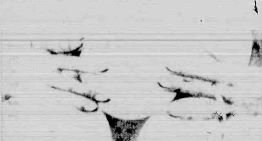
On New And  
Used  
OFFICE FURNITURE

THOMAS PRINTING AND  
OFFICE SUPPLY

313 Union Ave., Rutherford • 939-0509  
OPEN MONDAY THRU FRIDAY 9-6; SATURDAY 9-5

## Del Polito Hairdressers

Experience the latest and innovative dis-  
covery in nail art. A personal creative  
touch oriented toward the individual's style  
and taste in colors and design.  
High fashion nails achieved by state of  
the art air brushing.



12 Belleville Ave.  
Bloomfield, N.J.

748-8571

Opposite A & P Shopping Center

## The Sound Room

SPEAKER FACTORY  
OUTLET

HIGH QUALITY CUSTOM  
SPEAKERS AT WHOLESALE  
PRICES. 18 MODELS  
PRICES & STYLES TO  
FIT EVERY BUDGET

Speaker  
Repair

Home  
Equipment

Mon-Fri 10-7 • Sat 10-6

556 Bloomfield Ave.  
Montclair  
744-7363

Announcing ...  
The Opening Of



The  
Icelandic Wool N' Works  
Inc.

Grand Opening Special  
\$20.00 with this coupon on  
merchandise except accessories

Good from Oct. 11 to Nov. 2

featuring  
Icelandic Woolen Products  
& Accessories

- Sweaters
- Jackets
- Hand Knits, etc.
- Men's Wear
- Children's Hand Knits

76 Church Street • Montclair  
783-2822

(By The Fountain)

Mon-Sat: 10-6, Thursday 11-8

## TRIO & CO. NUTLEY JEWELERS

Choose a gift from our  
fine jewelry collection



- WATCHES
- DIAMOND & GEMSTONE RINGS
- WEDDING BANDS

ALL AT DISCOUNT PRICES  
USE OUR LAYAWAY PLAN

Personal Service  
Expert Jewelry Repairs Done on Premises  
667-8296 Hours: Mon & Fri 10-8:30 667-8028  
Tues., Wed., Thurs. 10:30-6, Sat. 10-6

218 Franklin Ave., Nutley  
Our New Location 4 Blocks from Centre St.

667-8628

## OLIVE TREE CHILD CARE CENTERS



Ages 2-6

7:30 A.M.-5:30 P.M.

SPECIAL PROGRAMS

5 - Full Days

Kindergarten Full Day

3 Mornings, 9:30-12

Pre-Kindergarten, 3

Afternoons

Bloomfield 748-1984  
Wayne 942-1910

Present this ad 4th week  
free on new registration

OPEN SUN. & MON.



A Full Service Salon

1 Lackawanna Plaza (Pathmark Mall)  
Montclair, N.J. • 783-1111

Hours: Mon.-Thurs. 9-6, Wed. 9-8,  
Thurs. & Fri. 9-9, Sat. 9-5, Sun. 9-4

Michael D. Sicho & Vincent Sangemino  
invite you to their full service salon

(Open Good Thru Oct. 10, 1986)

TIPS WITH WRAPS  
SILK OR  
LINEN \$29.95

Reg. \$55

WRAP YOUR OWN  
NATURAL NAILS  
SILK OR  
LINEN \$19.95

Reg. \$35

PRECURE  
SPECIAL \$18.00

Reg. \$24

By Appointment, Welcome Operators

20%  
OFF  
YOUR 1ST  
Body Wave, Hair  
Cut, High Light-  
ing or any other  
service

\$5.00  
off  
YOUR 1ST  
Professional  
Facial  
Treatment

Salon Only on Premises

## V. SYLVESTROS

Garden Meat Market



CHOICE &  
PRIME  
MEATS

FREEZER ORDERS  
AVAILABLE

Free Parking • Free Delivery • Food Stamps

166 GARDEN AVE., BELLEVILLE  
759-1069

(Off Jarameno Bkwy. Union & Passaic)



# Columbus Day SALE

## DEL'S SHOE OUTLET

WHOLESALE AND RETAIL

112 FRANKLIN STREET  
BELLEVILLE, NEW JERSEY 07109  
TELEPHONE: 759-2360  
40-42 FERRY ST. NEWARK  
589-4646

We Have The Largest Variety  
of Men's and Women's Shoes  
DRESS - SPORTS - CASUAL  
AND LEATHER  
WOMEN'S SHOES - \$2.00 to \$10.00  
MEN'S SHOES - \$10.00-\$12.00  
BOOTS \$15.00

MON. TUES. THURS. FRI. 10 A.M. to 5 P.M.  
WED. 10 A.M. to 6 P.M. SAT. 9:30 A.M. to 5:30 P.M.

'We Will Not Be Under Sold'

## NOBEL TELEPHONE INSTALLATION CO. INC.

- Prewires
- Business Telephones
- Jacks Installed
- Telephone Sales & Service

EVENING & WEEKEND  
SERVICE AVAILABLE  
Business Office  
667-3154

## COMPLEX IV

MODELS NEEDED FOR TELEVISION

Everyday people needed for upcoming  
national cable commercial. No experience  
necessary.

15 Gloria Lane  
Fairfield, N.J. • 882-1590

## LITTLE SCHOLAR NURSERY SCHOOL

Corner of Union & Little St  
FALL REGISTRATION  
STILL AVAILABLE

Full time & part time hours  
between 7:30 am & 5:30 pm  
BREAKFAST HOUR 7:30 to 8:30  
Ages 2 1/2 to 5 years - certified experienced  
teachers, pediatric nurse, open door policy  
751-4050

## BLOOMFIELD VACUUM

SALES AND SERVICE  
(Next to Wellmont Theatre)

402 BLOOMFIELD AVE.  
MONTCLAIR  
JOHN L. SCULLEY  
PHONE (201) 744-6648

## MASCOLO'S FLORISTS

FLOWERS  
FOR ALL OCCASIONS  
FLOWERS  
BY WIRE

FREE DELIVERY SERVICE  
All Major Credit Cards Accepted

743-6251  
417 Bloomfield Ave.  
Bloomfield

*Ellie's Closet*  
"Potpourri of Neat Things  
for the Ultimate Consumer"

80 Church Street  
Montclair, New Jersey  
(201) 744-3055  
Ellie Tuomey

## PLAZA TRAVEL

- No Charge For Our Services
- Corporate Accounts Welcomed
- Free Ticket Delivery
- Individual and Group Tours/Cruises
- Vacation Travel Planners
- Fully Computerized Ticketing
- For the Fall, Cruise Discounts Avail  
Contact Us For Details



759-1800

360 FRANKLIN AVENUE  
BELLEVILLE

Phil Agosta Josephine Zarra Restaura



## The RUG CLEANERS

23 Willet Street  
Bloomfield

Truck Mounted  
Carpet Steam Cleaning  
24 Hour Emergency Floodwork



Rug Cleaning (In-house or  
pick-up and delivery)  
Homes - Offices - Apartments  
Condos - Places of Business

Call Us! (201) 429-7770

featuring  
fine  
corsetry  
and  
lingerie

noted for  
expert  
fittings

specialists  
for the  
masteconomy

*Mildred's*

183 So. Belington Ave. • Belington  
(201) 984-3841 • (201) 994-0291

## THE MAGIC COTTAGE NURSERY SCHOOL

383 WASHINGTON AVE.  
BELLEVILLE  
7:30 A.M. - 4 P.M.



REGISTER NOW FOR FALL SESSIONS  
ALL DAY KINDERGARTEN  
NURSERY & DAY CARE SERVICES

CALL NOW  
759-8758

Member Of Belleville Chamber of Commerce

## FRANK'S REMOVAL SERVICE

"Full Cleanup & Removal"



- Basement
- House
- Garage
- Rubbish

• Light Hauling • Yard  
998-1262 or 751-4885 aft. 5pm

## SPRING GARDEN FLORISTS



For Beautiful  
Floral Arrangements  
Winter, Spring, Summer  
or Fall

• Free Delivery  
• 2 mile radius  
All over Essex, Bergen,  
Hudson & Union Counties

Credit Cards Honored by Telephone



WORLDWIDE  
DELIVERIES

748-4070  
399 BROAD ST.  
BLOOMFIELD

## The Window Workshop

FULL LINE OF

- Vertical Blinds • Mini Blinds
- Woven Woods • Pleated Shades
- Balloon Shades • Bedspreads

We Will Laminate Your  
Fabric or Wallpaper on Blinds

FREE ESTIMATES  
751-8902

## COLUMBUS DAY SPECIAL

COCONUT CUSTARD  
& PUMPKIN PIES  
BUY ONE-GET ONE FREE  
SATURDAY & SUNDAY

MEYER'S BAKERY & CAFE  
227 FRANKLIN AVENUE  
NUTLEY, N.J. 667-8587

KIELB'S BAKERY  
919 FRANKLIN AVENUE  
NEWARK, N.J. 482-0585

MEYER'S BAKERY  
382 WASHINGTON AVENUE  
BELLEVILLE, N.J. 759-1673

**RESULTS**

Pick up the phone and dial today  
Results are just a phone call away

THE NUTLEY SUN  
BELLEVILLE TIMES  
BLOOMFIELD LIFE

## CHRISTMAS TIME AGAIN!!

THIS CHRISTMAS SHOP IN YOUR OWN  
HOME WITH AVON SAVE MONEY &  
TIME OR MAKE EXTRA \$\$\$ FOR THE  
HOLIDAYS SELLING AVON.

CALL DIANE 667-4228



Ride the  
FASHION  
EXPRESS  
EVA JOIA  
SERGIO VALENTE  
LOLLY TOGS  
LEVIS  
MEMBERS ONLY  
Save up to  
**70%  
OFF**  
Manufactured by  
Kid's Depot

210 MEADOWLAND PKWY., SECAUCUS • 346-0650  
OPEN SUNDAY 12-5 • DAILY 10-6 • OPEN THURSDAY 11-5 PM

## VINNIES PIZZERIA

227 CENTRE ST.  
NUTLEY, N.J.

667-1551

FREE DELIVERY  
NUTLEY & BELLEVILLE



# Columbus Day SALE



## Sandy Lane Nursery School

"A Child's World Where Playing Is Learning"

634 Mill Street  
Belleville  
751-6380

Days and hours to meet your needs

HOURS 7:30-5:45

Call or come in to register  
School open to visitors

Development Program in

- Arts • Music • Skills
- Language • Social Development

Continuous day care programs for working mothers  
Nutritionally balanced Lunch  
State Licensed Certified School & Teachers.

ACCEPTING FALL REGISTRATIONS  
NOW

Dedicated to a program of Early Childhood Education



YOU'LL BE  
*Surprised*

The Nutley Sun  
Belleville Times  
Bloomfield Life



## CHRISTMAS is just around the corner

A select group of readers, with one of the highest degree of purchasing power and discretionary income in Essex County, will be looking to their favorite medias, **THE NUTLEY SUN, BELLEVILLE TIMES & BLOOMFIELD LIFE**, to make their Christmas shopping easy.

We will be publishing

### "PICK A PRESENT"

#### PUBLICATION DATES

Thursday, Nov. 20th  
Thursday, Nov. 27th  
Thursday, Dec. 4th  
Thursday, Dec. 11th

#### DEADLINES

Friday, Nov. 14th  
Friday, Nov. 21st  
Friday, Nov. 28th  
Friday, Dec. 5th

RATE \$3.44 per column inch

ALSO, for our advertisers to bring greetings to their customers and friends, we will publish

### "SEASON'S GREETINGS"

#### PUBLICATION DATE

Thursday, Dec. 25th  
Thursday, Jan. 1st

#### DEADLINES

Friday, Dec. 19th  
Friday, Dec. 26th

RATE \$3.44 per column inch

Call now and reserve your space — reach the readership that CAN and DOES BUY!

CALL **667-3000** Classified

Orechio Publications & TV  
Publishing & Broadcasting

800 Bloomfield Avenue, Nutley, New Jersey 07110

#### SHERIFF'S SALE

SUPERIOR COURT OF NEW JERSEY  
CHANCERY DIVISION, ESSEX COUNTY  
DOCKET NO. F-2262-85, ALLIANCE  
MORTGAGE COMPANY, PLAINTIFF, vs.  
NANCY A. BROWN, et al., DEFENDANTS  
Execution for Sale of Mortgaged Premises.

By virtue of the above stated writ of Execution, to me directed, I shall expose for sale by Public Auction, in SHERIFF'S OFFICE, Essex County Courthouse Building in Newark, on Tuesday, the 21st day of October next, at one o'clock P.M., the following:

One-half (1/2) of the lot, approximately 43 feet wide by 181 feet long, nearest cross street, being 181 feet long, the rear side of Superior Street.

A full legal description can be found in the Office of the Register of Essex County.

A DEPOSIT OF 20% OF THE BID PRICE IN CASH OR CERTIFIED FUNDS IS REQUIRED AT THE TIME OF SALE.

The approximate amount of the judgment to be satisfied by said sale is the sum of FOUR THOUSAND SIX HUNDRED NINETY CENTS (\$4,699.98), together with the costs of this sale.

The Sheriff reserves the right to adjourn the sale from time to time as provided by law.

By the Sheriff: THOMAS J. DIALESIO, Sheriff

WILLIAM M. POWERS, JR., Attorney  
Bloomfield, N.J., September 13, 1986  
Oct. 2, 9, 16, 1986  
See 582-72

No. B086-53

SHERIFF'S SALE

SUPERIOR COURT OF NEW JERSEY  
CHANCERY DIVISION, ESSEX COUNTY  
DOCKET NO. F-2262-85, ALLIANCE  
MORTGAGE COMPANY, PLAINTIFF, vs.  
NANCY A. BROWN, et al., DEFENDANTS  
Execution for Sale of Mortgaged Premises.

By virtue of the above stated writ of Execution, to me directed, I shall expose for sale by Public Auction, in SHERIFF'S OFFICE, Essex County Courthouse Building in Newark, on Tuesday, the 21st day of October next, at one o'clock P.M., the following:

One-half (1/2) of the lot, approximately 43 feet wide by 181 feet long, nearest cross street, being 181 feet long, the rear side of Superior Street.

A full legal description can be found in the Office of the Register of Essex County.

#### SHERIFF'S SALE

SUPERIOR COURT OF NEW JERSEY  
CHANCERY DIVISION, ESSEX COUNTY  
DOCKET NO. F-2262-85, ALLIANCE  
MORTGAGE COMPANY, PLAINTIFF, vs.  
NANCY A. BROWN, et al., DEFENDANTS  
Execution for Sale of Mortgaged Premises.

By virtue of the above stated writ of Execution, to me directed, I shall expose for sale by Public Auction, in SHERIFF'S OFFICE, Essex County Courthouse Building in Newark, on Tuesday, the 21st day of October next, at one o'clock P.M., the following:

One-half (1/2) of the lot, approximately 43 feet wide by 181 feet long, nearest cross street, being 181 feet long, the rear side of Superior Street.

A full legal description can be found in the Office of the Register of Essex County.

A DEPOSIT OF 20% OF THE BID PRICE IN CASH OR CERTIFIED FUNDS IS REQUIRED AT THE TIME OF SALE.

The approximate amount of the judgment to be satisfied by said sale is the sum of FOUR THOUSAND SIX HUNDRED NINETY CENTS (\$4,699.98), together with the costs of this sale.

The Sheriff reserves the right to adjourn the sale from time to time as provided by law.

By the Sheriff: THOMAS J. DIALESIO, Sheriff

WILLIAM M. POWERS, JR., Attorney  
Bloomfield, N.J., September 13, 1986  
Oct. 2, 9, 16, 1986  
See 582-72

No. B086-53

SHERIFF'S SALE

SUPERIOR COURT OF NEW JERSEY  
CHANCERY DIVISION, ESSEX COUNTY  
DOCKET NO. F-2262-85, ALLIANCE  
MORTGAGE COMPANY, PLAINTIFF, vs.  
NANCY A. BROWN, et al., DEFENDANTS  
Execution for Sale of Mortgaged Premises.

By virtue of the above stated writ of Execution, to me directed, I shall expose for sale by Public Auction, in SHERIFF'S OFFICE, Essex County Courthouse Building in Newark, on Tuesday, the 21st day of October next, at one o'clock P.M., the following:

One-half (1/2) of the lot, approximately 43 feet wide by 181 feet long, nearest cross street, being 181 feet long, the rear side of Superior Street.

A full legal description can be found in the Office of the Register of Essex County.

#### SHERIFF'S SALE

SUPERIOR COURT OF NEW JERSEY  
CHANCERY DIVISION, ESSEX COUNTY  
DOCKET NO. F-2262-85, ALLIANCE  
MORTGAGE COMPANY, PLAINTIFF, vs.  
NANCY A. BROWN, et al., DEFENDANTS  
Execution for Sale of Mortgaged Premises.

By virtue of the above stated writ of Execution, to me directed, I shall expose for sale by Public Auction, in SHERIFF'S OFFICE, Essex County Courthouse Building in Newark, on Tuesday, the 21st day of October next, at one o'clock P.M., the following:

One-half (1/2) of the lot, approximately 43 feet wide by 181 feet long, nearest cross street, being 181 feet long, the rear side of Superior Street.

A full legal description can be found in the Office of the Register of Essex County.

A DEPOSIT OF 20% OF THE BID PRICE IN CASH OR CERTIFIED FUNDS IS REQUIRED AT THE TIME OF SALE.

The approximate amount of the judgment to be satisfied by said sale is the sum of FOUR THOUSAND SIX HUNDRED NINETY CENTS (\$4,699.98), together with the costs of this sale.

The Sheriff reserves the right to adjourn the sale from time to time as provided by law.

By the Sheriff: THOMAS J. DIALESIO, Sheriff

WILLIAM M. POWERS, JR., Attorney  
Bloomfield, N.J., September 13, 1986  
Oct. 2, 9, 16, 1986  
See 582-72

No. B086-53

SHERIFF'S SALE

SUPERIOR COURT OF NEW JERSEY  
CHANCERY DIVISION, ESSEX COUNTY  
DOCKET NO. F-2262-85, ALLIANCE  
MORTGAGE COMPANY, PLAINTIFF, vs.  
NANCY A. BROWN, et al., DEFENDANTS  
Execution for Sale of Mortgaged Premises.

By virtue of the above stated writ of Execution, to me directed, I shall expose for sale by Public Auction, in SHERIFF'S OFFICE, Essex County Courthouse Building in Newark, on Tuesday, the 21st day of October next, at one o'clock P.M., the following:

One-half (1/2) of the lot, approximately 43 feet wide by 181 feet long, nearest cross street, being 181 feet long, the rear side of Superior Street.

A full legal description can be found in the Office of the Register of Essex County.

#### SHERIFF'S SALE

SUPERIOR COURT OF NEW JERSEY  
CHANCERY DIVISION, ESSEX COUNTY  
DOCKET NO. F-2262-85, ALLIANCE  
MORTGAGE COMPANY, PLAINTIFF, vs.  
NANCY A. BROWN, et al., DEFENDANTS  
Execution for Sale of Mortgaged Premises.

By virtue of the above stated writ of Execution, to me directed, I shall expose for sale by Public Auction, in SHERIFF'S OFFICE, Essex County Courthouse Building in Newark, on Tuesday, the 21st day of October next, at one o'clock P.M., the following:

One-half (1/2) of the lot, approximately 43 feet wide by 181 feet long, nearest cross street, being 181 feet long, the rear side of Superior Street.

A full legal description can be found in the Office of the Register of Essex County.

A DEPOSIT OF 20% OF THE BID PRICE IN CASH OR CERTIFIED FUNDS IS REQUIRED AT THE TIME OF SALE.

The approximate amount of the judgment to be satisfied by said sale is the sum of FOUR THOUSAND SIX HUNDRED NINETY CENTS (\$4,699.98), together with the costs of this sale.

The Sheriff reserves the right to adjourn the sale from time to time as provided by law.

By the Sheriff: THOMAS J. DIALESIO, Sheriff

WILLIAM M. POWERS, JR., Attorney  
Bloomfield, N.J., September 13, 1986  
Oct. 2, 9, 16, 1986  
See 582-72

No. B086-53

SHERIFF'S SALE

SUPERIOR COURT OF NEW JERSEY  
CHANCERY DIVISION, ESSEX COUNTY  
DOCKET NO. F-2262-85, ALLIANCE  
MORTGAGE COMPANY, PLAINTIFF, vs.  
NANCY A. BROWN, et al., DEFENDANTS  
Execution for Sale of Mortgaged Premises.

By virtue of the above stated writ of Execution, to me directed, I shall expose for sale by Public Auction, in SHERIFF'S OFFICE, Essex County Courthouse Building in Newark, on Tuesday, the 21st day of October next, at one o'clock P.M., the following:

One-half (1/2) of the lot, approximately 43 feet wide by 181 feet long, nearest cross street, being 181 feet long, the rear side of Superior Street.

A full legal description can be found in the Office of the Register of Essex County.

THE NUTLEY SUN  
BELLEVILLE TIMES  
BLOOMFIELD LIFE

**Classified**

**YOUR ADS ARE WORTH GETTING RESULTS!**

**667-3000**

Mon. thru Fri. 9:00 AM to 5:00 PM

Deadline - Tues. 12:00 Noon

### CLASSIFIED INDEX

CHECK YOUR AD THE FIRST DAY OF PUBLICATION. The Nutley Sun, The Belleville Times and the Bloomfield Life are responsible only for MAJOR errors in the first day's insertion.

**CREDITS**  
Credits and adjustments are to be made only for errors which significantly alter the effectiveness of an ad, such as a wrong telephone or price. Credits will not be issued for typographical errors or misspelled words. The newspaper assumes no responsibility only for MAJOR errors in the first day's insertion.

All Classified Ads. See Special Ad. All Times Publications.

24 hr. Staffing 24 hr. The following are the rates for 1986:

And will appear on the abc TV36 Channel 36.

During The Community Relations Board Time Frame:

1. 100 General Opportunities 0.15

2. 100 Professional 0.15

3. 100 Business/Industrial 0.15

4. 100 Real Estate 0.15

5. 100 Automobile 0.15

6. 100 Legal 0.15

7. 100 Medical 0.15

8. 100 Financial 0.15

9. 100 Insurance 0.15

10. 100 Other 0.15

11. 100 Other 0.15

12. 100 Other 0.15

13. 100 Other 0.15

14. 100 Other 0.15

15. 100 Other 0.15

16. 100 Other 0.15

17. 100 Other 0.15

18. 100 Other 0.15

19. 100 Other 0.15

20. 100 Other 0.15

21. 100 Other 0.15

22. 100 Other 0.15

23. 100 Other 0.15

24. 100 Other 0.15

25. 100 Other 0.15

26. 100 Other 0.15

27. 100 Other 0.15

28. 100 Other 0.15

29. 100 Other 0.15

30. 100 Other 0.15

31. 100 Other 0.15

32. 100 Other 0.15

33. 100 Other 0.15

34. 100 Other 0.15

35. 100 Other 0.15

36. 100 Other 0.15

37. 100 Other 0.15

38. 100 Other 0.15

39. 100 Other 0.15

40. 100 Other 0.15

41. 100 Other 0.15

42. 100 Other 0.15

43. 100 Other 0.15

44. 100 Other 0.15

45. 100 Other 0.15

46. 100 Other 0.15

47. 100 Other 0.15

48. 100 Other 0.15

49. 100 Other 0.15

50. 100 Other 0.15

51. 100 Other 0.15

52. 100 Other 0.15

53. 100 Other 0.15

54. 100 Other 0.15

55. 100 Other 0.15

56. 100 Other 0.15

57. 100 Other 0.15

58. 100 Other 0.15

59. 100 Other 0.15

60. 100 Other 0.15

61. 100 Other 0.15

62. 100 Other 0.15

63. 100 Other 0.15

64. 100 Other 0.15

65. 100 Other 0.15

66. 100 Other 0.15

67. 100 Other 0.15

68. 100 Other 0.15

69. 100 Other 0.15

70. 100 Other 0.15

71. 100 Other 0.15

72. 100 Other 0.15

73. 100 Other 0.15

74. 100 Other 0.15

75. 100 Other 0.15



### 05 AUTO SALES

#### BELLEVILLE YELLOW CAB

OUT-OF-TOWN TAXI SERVICE-ANYWHERE

DEPENDABLE SERVICE

759-2000

1981 Ford Camaro

1981 Ford Camaro

1981 Ford Camaro

1981 Ford Camaro

1981 Ford Camaro

1981 Ford Camaro

1981 Ford Camaro

1981 Ford Camaro

1981 Ford Camaro

1981 Ford Camaro

1981 Ford Camaro

1981 Ford Camaro

1981 Ford Camaro

1981 Ford Camaro

1981 Ford Camaro

1981 Ford Camaro

1981 Ford Camaro

1981 Ford Camaro

1981 Ford Camaro

1981 Ford Camaro

1981 Ford Camaro

1981 Ford Camaro

1981 Ford Camaro

1981 Ford Camaro

1981 Ford Camaro

1981 Ford Camaro

1981 Ford Camaro

1981 Ford Camaro

1981 Ford Camaro

1981 Ford Camaro

1981 Ford Camaro

1981 Ford Camaro

1981 Ford Camaro

1981 Ford Camaro

1981 Ford Camaro

1981 Ford Camaro

1981 Ford Camaro

1981 Ford Camaro

1981 Ford Camaro

1981 Ford Camaro

1981 Ford Camaro

1981 Ford Camaro

1981 Ford Camaro

1981 Ford Camaro

1981 Ford Camaro

1981 Ford Camaro

1981 Ford Camaro

1981 Ford Camaro

1981 Ford Camaro

1981 Ford Camaro

1981 Ford Camaro

1981 Ford Camaro

1981 Ford Camaro

1981 Ford Camaro

1981 Ford Camaro

1981 Ford Camaro

1981 Ford Camaro

1981 Ford Camaro

1981 Ford Camaro

1981 Ford Camaro

1981 Ford Camaro

1981 Ford Camaro

1981 Ford Camaro

1981 Ford Camaro

1981 Ford Camaro

1981 Ford Camaro

1981 Ford Camaro

1981 Ford Camaro

1981 Ford Camaro

1981 Ford Camaro

1981 Ford Camaro

1981 Ford Camaro

1981 Ford Camaro

1981 Ford Camaro

1981 Ford Camaro

1981 Ford Camaro

1981 Ford Camaro

1981 Ford Camaro

1981 Ford Camaro

1981 Ford Camaro

1981 Ford Camaro

1981 Ford Camaro

### 24 AUTO WRECKERS

#### MEADOWLANDS AUTO WRECKERS

Buyers of All Junk Cars

Trucks & Vans

Sellers of Used Auto Parts

Anything! Everything!

Call Richie Gallo

Open Mon-Sat

8 a.m. - 5 p.m.

991-0180

Belleville Township

P.O. Box 883

North Arlington

New Jersey 07032

We Deliver

24 HOURS

HUNK CARS WANTED

Free Tow Away

Same Day Pick-Up

505 TOWING INC.

429 841 Bloomfield

481 210 Newark

2565 GENERAL NOTICES

#### I NEED 47 PEOPLE TO LOSE WEIGHT ON FAMOUS HERBAL PRODUCTS AND SEEN ON TV. NO DRUGS. NO EXERCISE. GUARANTEED. CALL 1-800-754-3080

#### NEED ANY FARM PRODUCT? Buy direct from Jersey Farm

Call 1-800-754-3080

Call 1-800-754-3080

Call 1-800-754-3080

Call 1-800-754-3080

Call 1-800-754-3080

Call 1-800-754-3080

Call 1-800-754-3080

Call 1-800-754-3080

Call 1-800-754-3080

Call 1-800-754-3080

Call 1-800-754-3080

Call 1-800-754-3080

Call 1-800-754-3080

Call 1-800-754-3080

Call 1-800-754-3080

Call 1-800-754-3080

Call 1-800-754-3080

Call 1-800-754-3080

Call 1-800-754-3080

Call 1-800-754-3080

Call 1-800-754-3080

Call 1-800-754-3080

Call 1-800-754-3080

Call 1-800-754-3080

Call 1-800-754-3080

Call 1-800-754-3080

Call 1-800-754-3080

Call 1-800-754-3080

Call 1-800-754-3080

Call 1-800-754-3080

Call 1-800-754-3080

Call 1-800-754-3080

Call 1-800-754-3080

Call 1-800-754-3080

Call 1-800-754-3080

Call 1-800-754-3080

Call 1-800-754-3080

Call 1-800-754-3080

Call 1-800-754-3080

Call 1-800-754-3080

Call 1-800-754-3080

Call 1-800-754-3080

Call 1-800-754-3080

Call 1-800-754-3080

Call 1-800-754-3080

Call 1-800-754-3080

Call 1-800-754-3080

Call 1-800-754-3080

Call 1-800-754-3080

Call 1-800-754-3080

Call 1-800-754-3080

Call 1-800-754-3080

Call 1-800-754-3080

Call 1-800-754-3080





43A7 APARTM  
UNFURNISH

TLEY  
 carpeted Vacant \$6  
 MFIELD  
 k bath, new carpeting  
 carpeted Vacant Near

\$600 +  
 EVILLE  
 baths, w/w, appl  
 \$675 +  
 \$550 +  
 ECT CALL  
 Grutt, Realtor  
 WOOD  
 ate Agency  
 9-7380  
 BLOOMFIELD  
 NTS WANTED  
 LANDLORDS!

**BELLEVILLE**  
H HW & gas & e  
included. Call 759-

BELLEVILLE  
BLOOMFIELD  
NUTLEY  
Studio 1 & 2 b

**★ MARZULLI**  
264 Belleville Ave.  
Bloomfield, N.J.  
Realtors

**BELLEVILLE**  
3 1/2 mod rms 1811  
utils incl \$550 a mo  
4 1/2 mod rms supp  
utils \$450 a mo  
5 rms 2nd flr h. h  
a mo  
5 rms 2nd flr h. h

43A8  
**CONDOS FOR**

4307 COMMERCIAL  
BUSINESS DEPT.

BELLEVILLE  
STORE FROM  
\$500 PER MON  
HEAT INCL  
COSTANTIN  
REALTY

4362  
GARAGE FOR

Garage For Rent  
1,000 sq. ft. up & down  
overhead doors  
storage for autos  
repairs. Excellent  
Call 748-9042 or 78-  
43H9

**NUTLEY** 3-bdrm  
on quiet street near  
\$950 per mo + sec

CHILD O.K. REALTY  
RECORDS REAL  
667-5500

---

4305  
OFFICE RENT

---

**4387 RESIDENTIAL  
RENTALS WANTED**

Responsible w  
needs safe  
moderately price  
For Nov 1. G  
preferred with s  
no dogs 429-2480

---

ATTENTION  
LANDLORDS  
Apartments Wa

Prospective Tenant  
No Fee To Land  
COSTANTINE RE  
289 Franklin A  
Nutley, N.J.  
Realtor, 60

**43R9 ROOM**

**NUTLEY**  
Furnished r  
available for imm  
occupancy From  
week Male/female

NUTLEY LARGE  
NISHED ROOM  
ALL PRIVILE

CALL 867-7000.



180 Centre St.  
Nutley, N.J. 07110  
667-3440

# GEORGE E. MACMUNN CO.

## REALTORS

100 Woodport Road  
Sparta, N.J. 07871  
729-8727



**OPEN HOUSE - SUNDAY 1-4PM** - 154 Whitford Ave. (off Highfield Lane) - country atmosphere. Lovely Liv. Rm., Den on 1st, extra lg. Din. Rm., large country kt. 3 bdr's, 4 good size bedrooms. ASKING \$189,900.



**NUTLEY** - Immaculate colonial on lovely tree lined St. terrific fam. Rm. w/ frpl, sliders to deck overlooking lovely gardens w/ above-ground pool, finished rec. rm. in basement. ASKING \$199,900.

**DO YOU KNOW  
WHAT YOUR  
HOUSE IS  
WORTH  
TODAY?**

We offer a current market  
Value analysis  
Just pick up the phone & call



**NUTLEY PARK** - 50x150 lot, 2 car gar., chestnut trim, beamed LR w/ frpl, extra lg DR., 4 Bedrooms, den on 1st + lovely fam. rm. in basement. ASKING \$209,000. YOUR OFFER MAY TAKE IT!



**SPARTA** - Huge landscaped lot with private patio. Liv. Rm. w/ frpl, Din. Rm., eat in kit, 2 bedrooms, new w/w carpeting. ASKING \$132,500.

**Century 21**  
**HOMES R US**

549 Washington Ave.  
Belleville, NJ 07109

751-8800

**Put Number 1 to work for you.**



"3 FAMILY"

**NUTLEY** - Near Holy Family - Features 2- two bedroom and 1-3 bedroom apts. which are all renovated w new walls, parking, baths, kits, and all sep heat. Asking \$279,900.

Each office is independently owned and operated. Equal housing opportunity.  
Find out how much your home is worth...  
call today for a free market analysis!

**Century 21** **WAYNE K. THOMAS**  
**REALTORS**



**BLOOMFIELD**  
**SPACIOUS ELEGANCE**

Beautiful 6 BR, 1 1/2 bath Colonial on quiet street. Perfect for large family. Newly decorated. A must see. Eves. call Gerri 338-9644. Asking \$225,000.

**277 Broad Street Bloomfield, New Jersey**  
**(201) 429-7400**

Each office independently owned and operated  
MEMBER OF BLOOMFIELD GLEN RIDGE,  
NUTLEY, BELLEVILLE BOARD OF REALTORS

## HIGH READERSHIP — EFFECTIVE ADVERTISING

### The Nutley Sun • Belleville Times • Bloomfield Life

- Complete In-Depth Coverage of All Local News
- Distribution by Mail Subscription and Newsstand
- Special Sections and Pages for:
  - Sports
  - Social Events
  - Front Page News
  - Editorials
  - Letters to the Editor
  - Classified Ads
- Special Inserts for Special Occasions
- Display Advertising That's Read With The Same Concentration as The News

## SUN — TIMES — LIFE

THE NEWSPAPERS THAT GIVE YOU HIGH READERSHIP  
AND HIGH SALES RESULTS.

**ORECHIO PUBLICATIONS**

— SINCE 1894 —

800 Bloomfield Avenue  
Nutley, New Jersey 07110

**(201) 667-2100**

**NATIONAL FLOOD INSURANCE PROGRAM**  
Proposed Flood Elevation Determinations  
ACTION: Proposed rule  
SUMMARY

Technical information or comments are solicited on the proposed modified base (100-year) flood elevations shown on your community's preliminary Revised Flood Insurance Rate Map. These base 100-year flood elevations are the basis for the Flood Insurance Program measures that the community is required to either adopt or show evidence of being already in effect in order to qualify or remain qualified for participation in the National Flood Insurance Program (NFIP). The proposed base flood elevations modify the base flood elevations shown on your community's presently effective Flood Insurance Rate Map.

**DATES:** The period for comment will be ninety (90) days following the second publication of this proposed rule in a newspaper of local circulation in the community.

**ADDRESSES:** Preliminary Revised Flood Insurance Rate Maps showing the proposed modified base flood elevations and their indications are available for review at the Town Engineering Department.

383 Washington Avenue, Belleville, New Jersey  
Send comments to:

The Mayor, Mayor's Office  
Mayor of the Town of Belleville  
Essex County

152 Washington Avenue  
Belleville, New Jersey 07109

FOR FURTHER INFORMATION CONTACT:  
John J. MacArthur

Acting Chief, Risk Studies Division  
Federal Emergency Management Agency  
Washington, DC 20472

2021-646-2767

**SUPPLEMENTARY INFORMATION:**  
The Federal Emergency Management Agency gives notice of the proposed determinations of modified base 100-year flood elevations, in accordance with Section 110 of the Flood Disaster

Protection Act of 1973 (Pub. L. 93-234, 87 Stat. 980), which added Section 1363 to the National Flood Insurance Act of 1968 (Title XII of the Housing and Urban Development Act of 1968 (Pub. L. 90-448), 42 U.S.C. 4001-4128, and 44 CFR 67.4(a)).

Base flood elevations shown on the Flood Insurance Rate Map are the minimum measures required by Section 60.3 of the program regulations, unless the minimum data are required. They should not be construed to mean the community must change any existing ordinances that are more stringent in their floodplain management requirements. The community may, at any time, enact stricter requirements on its own, or pursuant to policies established by other Federal, State, or regional entities.

These proposed elevations will also be used to calculate the appropriate flood insurance premium rates for new buildings and their contents and for the second level of insurance on existing buildings and their contents.

Pursuant to the provisions of 5 USC 605(b), the Administrator, to whom authority has been delegated by the Director, Federal Emergency Management Agency, hereby certifies that the proposed flood elevation determinations, if promulgated, will not have a significant economic impact on a substantial number of entities. A flood elevation determination under Section 1363 forms the basis for new local ordinances, which, if adopted by a local community, will govern future construction within the floodplain area. The elevation determinations, however, impose no restrictions unless and until the local community voluntarily adopts floodplain ordinances in accordance with these elevations. Even if ordinances are adopted in compliance with Federal standards, the elevations prescribe how high to build the floodplain and do not prescribe development. Thus, this action only forms the basis for future local actions. It imposes no new requirement of itself, it has no economic impact.

Proposed base flood elevations along flood sources studied in detail are shown on the Preliminary Revised Flood Insurance Rate Map. Lessees and owners of real property in the Town of Belleville, Essex County, New Jersey, are encouraged to review these maps and related materials at the address listed above. The flood sources studied in detail are:

Range of Base Flood Elevations  
Depth in Feet Above Ground  
Source of Flooding Currently Effective  
Second River  
Belleville Times  
October 2, 9, 1986  
Fee: \$61.10

Depth in Feet Above Ground  
Proposed Modified  
+104

Source of Flooding Currently Effective  
Second River  
Belleville Times  
October 2, 9, 1986  
Fee: \$61.10

Depth in Feet Above Ground  
Proposed Modified  
+104

Source of Flooding Currently Effective  
Second River  
Belleville Times  
October 2, 9, 1986  
Fee: \$61.10

Depth in Feet Above Ground  
Proposed Modified  
+104

Source of Flooding Currently Effective  
Second River  
Belleville Times  
October 2, 9, 1986  
Fee: \$61.10

Depth in Feet Above Ground  
Proposed Modified  
+104

Source of Flooding Currently Effective  
Second River  
Belleville Times  
October 2, 9, 1986  
Fee: \$61.10

Depth in Feet Above Ground  
Proposed Modified  
+104

Source of Flooding Currently Effective  
Second River  
Belleville Times  
October 2, 9, 1986  
Fee: \$61.10

Depth in Feet Above Ground  
Proposed Modified  
+104

Source of Flooding Currently Effective  
Second River  
Belleville Times  
October 2, 9, 1986  
Fee: \$61.10

Depth in Feet Above Ground  
Proposed Modified  
+104

Source of Flooding Currently Effective  
Second River  
Belleville Times  
October 2, 9, 1986  
Fee: \$61.10

Depth in Feet Above Ground  
Proposed Modified  
+104

Source of Flooding Currently Effective  
Second River  
Belleville Times  
October 2, 9, 1986  
Fee: \$61.10

Depth in Feet Above Ground  
Proposed Modified  
+104

Source of Flooding Currently Effective  
Second River  
Belleville Times  
October 2, 9, 1986  
Fee: \$61.10

Depth in Feet Above Ground  
Proposed Modified  
+104

Source of Flooding Currently Effective  
Second River  
Belleville Times  
October 2, 9, 1986  
Fee: \$61.10

Depth in Feet Above Ground  
Proposed Modified  
+104

Source of Flooding Currently Effective  
Second River  
Belleville Times  
October 2, 9, 1986  
Fee: \$61.10

Depth in Feet Above Ground  
Proposed Modified  
+104

Source of Flooding Currently Effective  
Second River  
Belleville Times  
October 2, 9, 1986  
Fee: \$61.10

Depth in Feet Above Ground  
Proposed Modified  
+104

Source of Flooding Currently Effective  
Second River  
Belleville Times  
October 2, 9, 1986  
Fee: \$61.10

Depth in Feet Above Ground  
Proposed Modified  
+104

Source of Flooding Currently Effective  
Second River  
Belleville Times  
October 2, 9, 1986  
Fee: \$61.10

Depth in Feet Above Ground  
Proposed Modified  
+104

Source of Flooding Currently Effective  
Second River  
Belleville Times  
October 2, 9, 1986  
Fee: \$61.10

Depth in Feet Above Ground  
Proposed Modified  
+104

Source of Flooding Currently Effective  
Second River  
Belleville Times  
October 2, 9, 1986  
Fee: \$61.10



**Double Your  
Money Back  
Meat  
Guarantee**

COMPLETE DETAILS AT ShopRite

**Introducing...**

**TRIM'n LEAN™**

**NOW...All Beef Trimmed To  
1 1/8" or Less Exterior Fat!  
Trimmed Right, Priced Right...That's ShopRite**

U.S.D.A. CHOICE BEEF

**Top Round  
London Broil**

TOP DECKEL  
REMOVED

**1.99**

lb.

U.S.D.A. CHOICE BEEF

**Top Round  
Boneless Roast**

**1.99**

lb.

NOT LESS THAN 85%

**Extra Lean  
Ground Beef**

ANY  
SIZE  
PKG

**1.79**

lb.

U.S.D.A. CHOICE BEEF LOIN, TAILLESS

**Boneless  
Shell Steaks**

SERVED IN FINE  
RESTAURANTS  
AS NEW YORK  
STRIP STEAK

**4.99**

lb.

U.S.D.A. CHOICE

**Beef Round  
Cubed Steak**

**2.49**

lb.

LOIN PORTION, 9-11 CHOPS

**Pork Chop  
Combination**

**1.79**

lb.

MEATY RIB PORTION,

**Pork Loin  
For Barbecue**

**1.89**

lb.

HOLLY FARMS SKINLESS &

**Boneless  
Chicken Breast**

**2.99**

lb.

ANY SIZE PKG. PERDUCE WHOLE WITH HIGHS

**Chicken Legs**

**.99**

lb.

ANY SIZE PKG. PERDUCE

**Chicken Thighs**

**.99**

lb.

ANY SIZE PKG. PERDUCE

**Chicken Drumsticks**

**1.09**

lb.

ANY SIZE PKG. PERDUCE WHOLE W/IB CAGE

**Chicken Breast**

**1.69**

lb.

THIN CUT

**Fresh Beef  
Brisket**

**1.99**

lb.

DELICIOUSLY DIFFERENT THORN APPLE VALLEY

**Smoked Turkey Ham**

**1.89**

lb.

THORN APPLE VALLEY WATER ADDED

**Boneless Ham Steaks**

**3.69**

lb.

WITH POCKET FOR STUFFING

**Breast of Veal**

**.99**

lb.

THIN CUT FROM TOP ROUND

**Beef Brasciole**

**2.99**

lb.

FROZEN

**Quaker Maid  
Sandwich Steaks**

**2.99**

pk.

DELICIOUS

**Fresh Pork  
Spare Ribs**

**1.99**

lb.

FOR STEW

**Boneless  
Veal Cubes**

**2.79**

lb.

**The Dairy Place**

WHOLE MILK OR PART SKIM

**ShopRite  
Ricotta**

**2.99**

3-lb. cont.

WHOLE MILK OR PART SKIM

**ShopRite Mozzarella**

**1.89**

1-lb. pkg.

LOSURDO

**Grated Cheese**

**2.99**

1-lb. pkg.

AXELROD

**Sour Cream**

**.79**

1-pt. cont.

REGULAR QUARTERS

**Imperial Margarine**

**.59**

1-lb. pkg.

**The Deli Place**

REG. OR LOW SALT, WHITE'S

**Three Kings  
Sliced Bacon**

**1.49**

1-lb. pkg.

MEAT, BEEF OR DINNER

**ShopRite Franks**

**1.19**

1-lb. pkg.

WHY PAY MORE?

**Plumrose Sliced Ham**

**3.99**

1-lb. pkg.

RED OR WHITE

**Gold's Horseradish**

**.69**

5-oz. jar

ShopRite

**Kosher Franks**

**1.99**

12-oz. pkg.

**The Appy Place**

NATURAL CASING

**Hormel DiLusso  
Genoa Salami**

**1.99**

1/2-lb.

CARANZO OR HORMEL STICK OR

**Slicing Pepperoni**

**2.99**

lb.

ShopRite STORE SLICED

**Provolone or Mozzarella**

**2.99**

lb.

STORE SLICED

**Bavarian Swiss Cheese**

**3.59**

lb.

HORMEL HOMEMADE

**Hard Salami**

**3.99**

lb.

**The Frozen Food Place**

ShopRite GRADE-A

**Orange  
Juice**

**.69**

12-oz. can.

CELESTANO "LARGE ROUND"

**Cheese Ravioli**

**1.19**

13-oz. pkg.

ASSORTED VARIETIES, TYSON

**Chicken Entrees**

**2.99**

9.5-oz. pkg.

ASSORTED FLAVORS

**Layer Cakes**

**1.59**

17-oz. pkg.

ASSORTED FLAVORS

**Dolly Madison**

**1.99**

1/2-gal. can.

**ShopRite Coupon**

WITH THIS COUPON

**Progresso  
Soups**

**2.99**

FOR 2

Coupon good at any ShopRite Market. Limit one per family. Effective Sun. Oct. 5 thru Sat. Oct. 11, 1986.

SAVE 39

IN OIL OR WATER

**Bumble Bee  
Chunk Light Tuna**

**.59**

6 1/2-oz. can.

ALL VARIETIES

**Maxwell House  
Master Blend**

**1.99**

13-oz. can.

ALL VARIETIES

**Seven Seas  
Salad Dressing**

**.59**

8-oz. btl.

CLEAR OR NATURAL

**ShopRite Apple Juice**

**.89**

1/2-gal. btl.

ALL VAR. EXCEPT ANGEL FOOD

**Duncan Hines**

**.79**

1-lb. 2 1/4-oz. box

PLANTERS REG. OR UNUSALTED

**Dry Roasted Peanuts**

**1.99**

1-lb. jar

ShopRite DANISH

**Butter Cookies**

**1.49**

1-lb. tin

REGULAR OR DIET

**Vintage Cola**

**.99**

2-lb. btl.

ALL VARIETIES

**Shasta Soda**

**.69**

2-lb. btl.

ALL VARIETIES

**Hawaiian Punch**

**.69**

1-qt. 14-oz. can.

PLAIN OR FLAVORED

**Progresso Bread Crumbs**

**.99**

1-lb. 8-oz. can.

15 1/2-INCH

**Baker's Secret  
Cookie Sheet**

**1.89**

each

10W10 OR 10W10 1/2 W/10 REG. ARE AVAILABLE ON 17 CANS

**Havoline Motor Oil**

**.79**

1-qt. cont.

1/4 PRICE, 1 PIECE MODEL #7221 LTD. QUAN. WHERE AVAILABLE

**Soundsense Telephone**

**17.47**

ea.

1/4 PRICE, FIT ALL TYPES OF 2-DIAL METER OR ELECTROLYTIC

**Hoover Vacuum Bags**

**.74**

pkg. of 74

**General Merchandise**

**15 1/2-INCH  
Baker's Secret  
Cookie Sheet**

**1.89**

each

10W10 OR 10W10 1/2 W/10 REG. ARE AVAILABLE ON 17 CANS

**Havoline Motor Oil**

**.79**

1-qt. cont.

1/4 PRICE, 1 PIECE MODEL #7221 LTD. QUAN. WHERE AVAILABLE

**Soundsense Telephone**

**17.47**

ea.

1/4 PRICE, FIT ALL TYPES OF 2-DIAL METER OR ELECTROLYTIC

**Hoover Vacuum Bags**

**.74**

pkg. of 74

**ShopRite Coupon**

WITH THIS COUPON

**Tootsie  
Rolls**

**.79**

Coupon good at any ShopRite Market. Limit one per family. Effective Sun. Oct. 5 thru Sat. Oct. 11, 1986.

SAVE 20

PEPSI FREE, LIGHT, DIET OR

**Regular  
Pepsi**

**.99**

2-ltr. btl.

WHY PAY MORE?

**Apple & Eve  
Apple Juice**

**.89**

1/2-gal. btl.

WHY PAY MORE?

**Heinz Keg O'  
Ketchup**

**1.19**

2-lb. jar

IN OIL OR WATER, SOLID WHITE

**Chicken of Sea Tuna**

**.89**

6-oz. can.

HUNT'S REG. OR NO SALT ADDED

**Tomato Sauce**

**1.00**

6-oz. can.

MAXWELL HOUSE

**Instant Coffee**

**4.99**

100-ct. box

WHY PAY MORE?

**Tetley Tea Bags**

**1.79**

100-ct. box

WHY PAY MORE?

**Mardi Gras Towels**

**.59**

88-ct. roll

WHY PAY MORE?

**Northern Bath Tissue**

**.99**

4-roll pkg.

IN OIL OR WATER, SOLID WHITE

**Chicken of Sea Tuna**

**.89**

6-oz. can.

HUNT'S REG. OR NO SALT ADDED

**Tomato Sauce**

**1.00**

6-oz. can.

MAXWELL HOUSE

**Instant Coffee**

**4.99**

100-ct. box

WHY PAY MORE?

**Tetley Tea Bags**

**1.79**

100-ct. box

WHY PAY MORE?

**Mardi Gras Towels**

**.59**

88-ct. roll

WHY PAY MORE?

**Northern Bath Tissue**

**.99**

4-roll pkg.

RICH IN VITAMINS

**Western  
Broccoli**

**.79**

large bunch

CHICOITA & OTHER BRANDS

**Golden Ripe  
Bananas**

**3.100**

100's

CRISP & CRUNCHY, EASTERN 100'S 1 1/2 DZ.

**Red Delicious Apples**

**.59**

NEW CROP

**Jonathan Apples**

**1.69**

5-lb. bag

SWEET CALIFORNIA

**Seedless Grapes**

**.99**

PLUMP & TENDER, 100'S 1 1/2 DZ.

**Fresh Artichokes**

**3.100**

3 for 1.00

FIRST OF THE SEASON, 6-8 DZ. 100'S 1 1/2 DZ.

**Imported Chestnuts**

**1.99**

100's

LUSCIOUS MUSCAT GRAPES

**1.49**

100's

FRESH RED PEPPERS

**.99**

100's

U.S. GRADE-A NEW ENGLAND

**Fresh Fillet  
of Flounder**

**3.99**

lb.

**The Family Pharmacy Dept.**

CALL US AT 235-0821

**Senior Citizen  
Discount Policy**

Sixty-two or older... You are welcome to save a full-10% off our regular Low Prescription prices. No involved applications to fill out. Simply present proof of age and we will immediately issue a Golden Age Discount Card that can be used with your first purchase. This card is for prescription purchases only and is not applicable to P.A.A. or Third Party Prescriptions.

Call us at 235-0821

*Materna® 1.60 Tablets 100's	<b>13.99</b>	*Stuartnatal® 1+1 Tablets 100's	<b>12.99</b>
*Poly Vi Flor® Tablets 0.5 mg or 1 mg 100's	<b>7.99</b>	*Poly Vi Flor® .25 mg Drops 50cc	<b>6.49</b>
*Tri Vi Flor® .25 mg Drops 50cc	<b>5.99</b>	*Multi Vitamin Tablets w/ Fluoride 0.5 mg or 1 mg 100's	<b>3.99</b>

Our pharmacists will gladly arrange transfer of an existing prescription from your present pharmacy to us.

Call us at 235-0821

\* Requires Prescription Expires 10/11/86

\*Quantities less than those listed may be slightly higher in price